



SERVICE MANUAL

Service, Repair & Replacement Parts Information

RIP-R-STRIPPER[®] Floor Covering Scraper

Model: CTS12GEN2

Form: PGSM11121101EU, Version 1.1, Original Instructions

- Do not discard this manual.
- Keep manual readily available for reference during operation or when servicing product.
- Before operation, read and comprehend operator manual content.
- **Customer Service:** 001 507 451 5510
- **Customer Service Telefax:** 001 507 451 5511

Note: There is no charge for Customer Service.

- **Internet Address:** <http://www.generalequip.com>
- **Email:** general@generalequip.com
- **Mailing Address:**
General Equipment Company, 620 Alexander Dr. S.W., P.O. Box 334, Owatonna, MN 55060, USA

EUROPEAN CE REPRESENTATIVE

- **Customer Service:** (+31) 5 23 63 82 86
- **Internet Address:** <http://www.eurogate-international.com>
- **Email:** info@eurogate-international.com
- **Mailing Address:** Eurogate International, Galilieistraat 6, 7701 SK Dedemsvaart, The Netherlands

Product covered by this manual complies with mandatory requirements of 2006/42/EC.

Copyright 2021, General Equipment Company, All rights reserved.

TABLE OF CONTENTS

1 INTRODUCTION 1
 2 SAFETY SYMBOLS..... 1
 3 SAFETY INSTRUCTIONS 1
 4 SERVICE/REPAIR INSTRUCTIONS 1
 5 END OF LIFECYCLE 4
 6 DECLARATION OF INCORPORATION 3
 7 REPLACEMENT PARTS 4

1 INTRODUCTION

The RIP-R-STRIPPER is intended for use in removing a variety of floor covering materials in a non-explosive atmosphere. This manual is provided to assist in the service of specific, longer term service items and replacement of parts when repairs are required. **Contents of this manual must be used in conjunction with the latest version Operator’s Manual GOM11121101EU for products sold within European Union countries and GOM11121101 for all other destinations.**

You have access to a team of dedicated, knowledgeable, support personnel that ready to provide field support assistance. Our personnel readily answer your questions or concerns regarding proper applications, service requirements and warranty related problems.

Please feel free to contact our European Representative or Customer Service Department during normal business hours using the contact information located on the front cover of this manual.

Sincerely,
The General Equipment Team

2 SAFETY SYMBOLS

The following safety alert symbols identify important safety messages in this manual. When you see these symbols, be alert to the possibility of personal injury and carefully read the message that follows.

SAFETY SYMBOLS & MEANINGS

Symbol	Meaning	Symbol	Meaning
	Action Required		No Trash Containers
	Read Manual		General Warning
	Wear Ear Protection		Warning, Flammable Material
	Wear Eye Protection		Warning, Explosive Material
	Wear Protective Gloves		Warning, Toxic Material
	Wear Safety Shoes		Warning, Electricity
	Wear Breathing Protection		Warning, Body Entrapment
	Disconnect From Power		Warning, Sharp Element
	No Open Flame		Warning, Floor Level Obstacle
	No Smoking		Warning, Drop Off
	No Active Mobile Phone		Warning, Slippery Surface

	No Food Or Drink		
--	------------------	--	--

3 SAFETY INSTRUCTIONS

- These safety instructions provide guidelines to promote safety and efficiency in servicing/repairing the RIP-R-STRIPPER.
- No warranty, guarantee or representation is made by manufacturer as to absolute correctness or sufficiency of any information or statement.
- Safety instructions are intended to deal with common practices and conditions encountered in servicing/repairing of RIP-R-STRIPPER and are not intended to be all inclusive.
- Not following instructions in this manual can result in property damage, personal injury and/or death.

BEFORE OPERATING



- BEFORE operating RIP-R-STRIPPER, read this manual and view applicable Safety/Operational Video to familiarize each operator with correct operating procedures.
- Visually inspect RIP-R-STRIPPER per Operator Manual MAINTENANCE INSTRUCTIONS STEPS 5 through 12.
- Determine RIP-R-STRIPPER is in original, factory configuration and has not been modified in any manner. If questions arise about possible modifications, contact the European Representative or Customer Service Department BEFORE utilization. There is no charge for this service.

NOTE: Specifications and design are subject to change without notice or obligation. All specifications are general in nature and are not intended for specific application purposes. General Equipment Company reserves the right to make changes in design, engineering or specifications and to add improvements or discontinue manufacture at any time without notice or obligation. General Equipment Company and its agents accept no responsibility for variations which may be evident in actual products, specifications, pictures and descriptions contained in this publication.

4 SERVICE/REPAIR INSTRUCTIONS



For routine maintenance, the following information is for specific service/repair situations for the RIP-R-STRIPPER. Information is for reference only and is not intended to be all inclusive.

- Use factory approved replacement parts/accessories only for servicing/repair.
- All service/repairs not described in this operator manual must be done by a dedicated service center following a specific service/repair manual.
- STOP RIP-R-STRIPPER BEFORE performing service and repair per STOPPING RIP-R-STRIPPER in OPERATOR INSTRUCTIONS section of Operator’s Manual.
- Remove accessory tool per INSTALLING & REMOVING ACCESSORY TOOL in MACHINE SET-UP section of Operator’s Manual.
- All breaker service/repairs should be done according to contents of breaker manufacturer materials.

IMPORTANT: Use safety type solvent. DO NOT use thinner, benzene, or other volatile solvents that will attack rubber/plastic components when cleaning RIP-R-STRIPPER. Provide adequate ventilation. Dispose of rags/solvents per international and local regulations.

NOTE: Properly dispose of all accumulated floor covering materials according to international and local environmental standards.

LUBRICATION

Grease intervals will vary dependent on machine use and operating environments. In general, lubrication should be performed after every 8 hours of continuous use.

Tools Required:

1each, standard grease gun

Lubricants Required:

1 each, (for standard grease gun) fill with one of the following:

- a) ESSO Beacon 325
- b) Shell Alvana #2
- c) Chevron SRI
- d) Or, equivalent NLGI #2 grease

1 each, container dry film lubricant

1. Lubricate caster wheel bearings using dry film lubricant. Lubricant dries immediately.

IMPORTANT: DO NOT lubricate caster wheel bearings with other than dry film type lubricants or over lubricate to prevent foreign material attraction and reduced bearing service life. Use sparingly.

2. Zerk type fittings are provided at two locations. Using grease gun, lubricate pivot plate bushings. Do not over lubricate. FIGURE 33



FIGURE 33

IMPORTANT: DO NOT over lubricate to prevent foreign material accumulations and accelerated wear/reduced bearing service life. Grease accumulation on bearing/bearing housing indicates excessive lubrication.

5 END OF LIFECYCLE



If the machine comes to the end of its lifecycle, destruction of the machine must be conducted according to international and local environmental regulations.

6 DECLARATION OF INCORPORATION

We, General Equipment Company, 620 Alexander Drive SW, P.O. Box 334, Owatonna, MN 55060, USA declare under our sole responsibility that the incomplete product: CTS12

To which this declaration relates is in conformity with the following standards or standardization documents:

- EN-ISO 12100:2010

According to the provisions of the European directive:

- 2006/42/EC

Manufactured at: Owatonna, Minnesota 55060, USA
Beginning with serial number: 140820



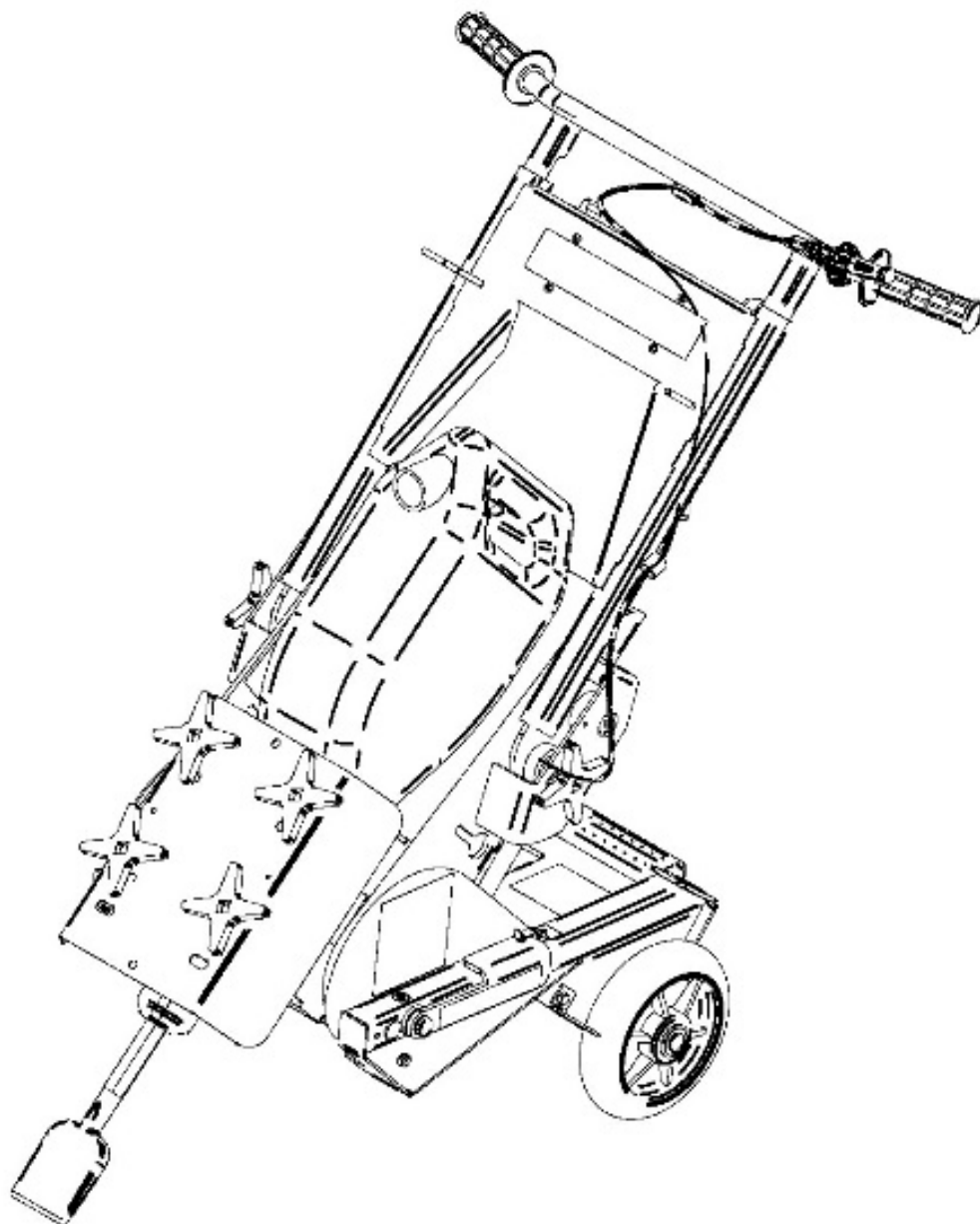
Signature: Dennis Von Ruden

Position: President

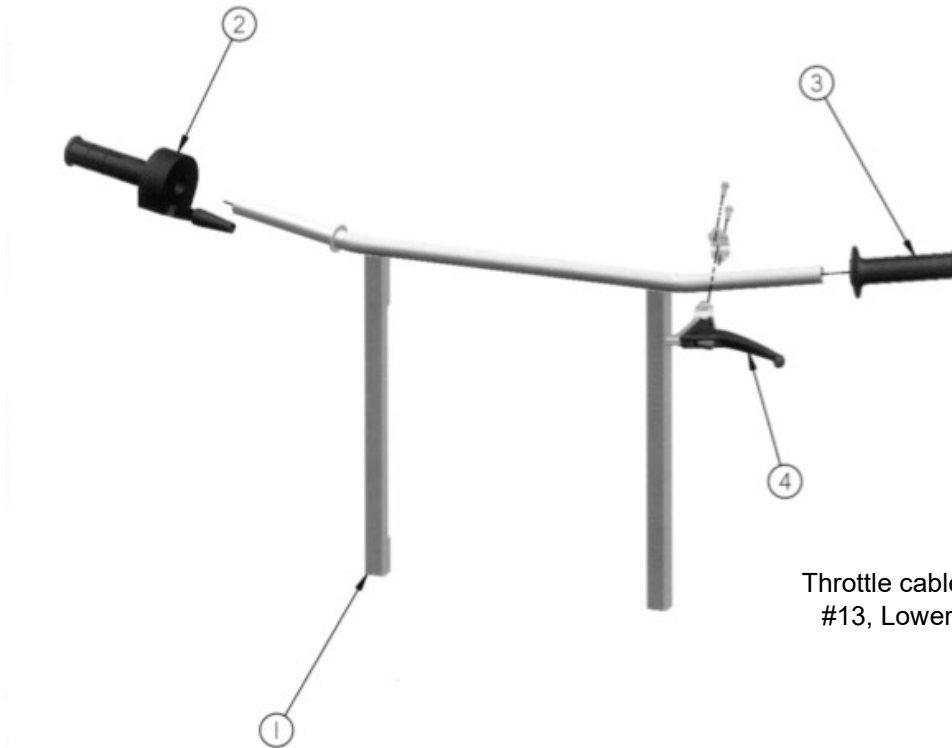
Date: April 4, 2016

THIS PAGE INTENTIONALLY
LEFT BLANK

7 Replacement Parts CTS12 RIP-R-STRIPPER



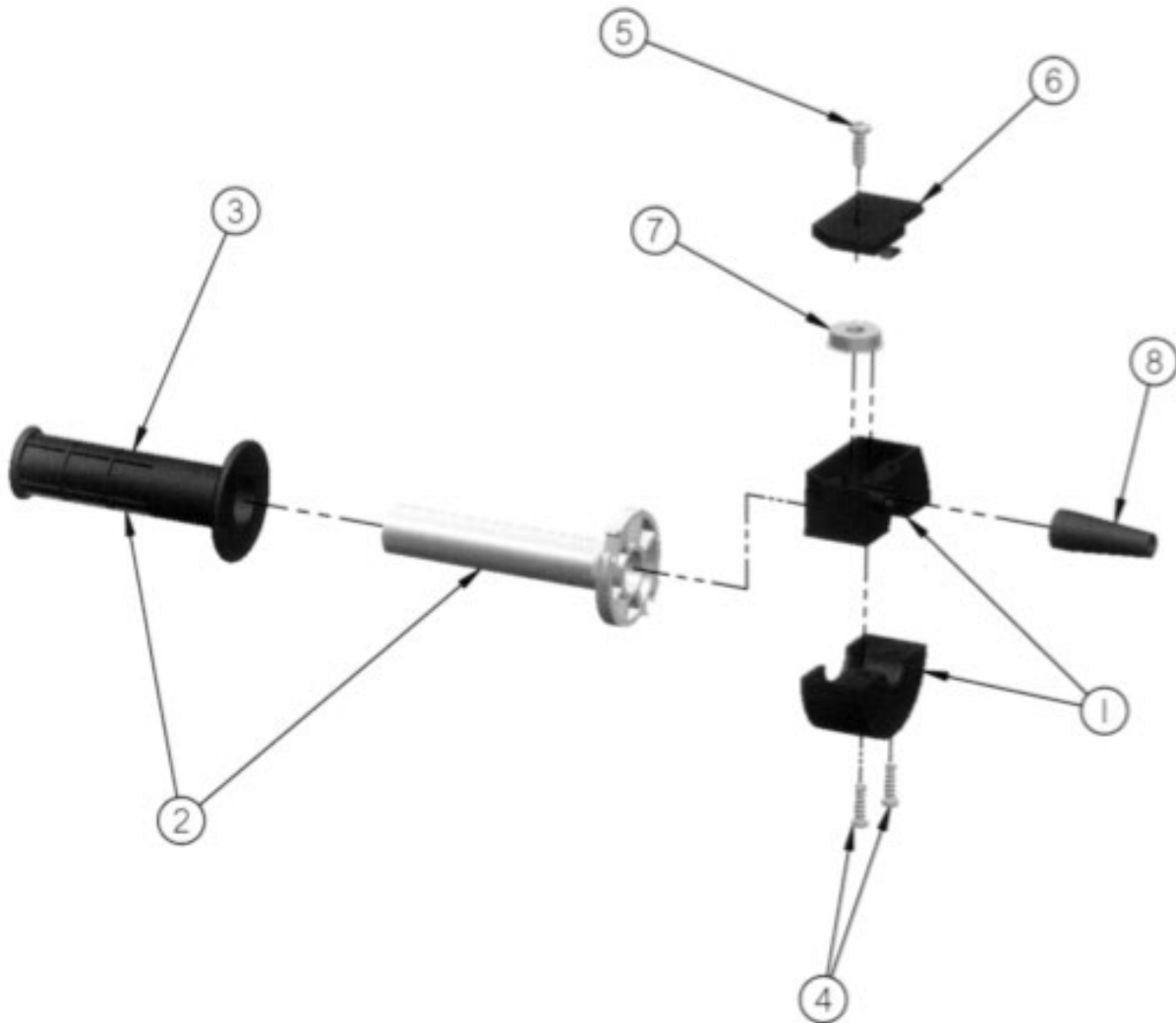
Replacement Parts Diagram Upper Handle Assembly [Up Through Serial Number 153105]



Throttle cable shown on page 42
 #13, Lower Handle Assembly

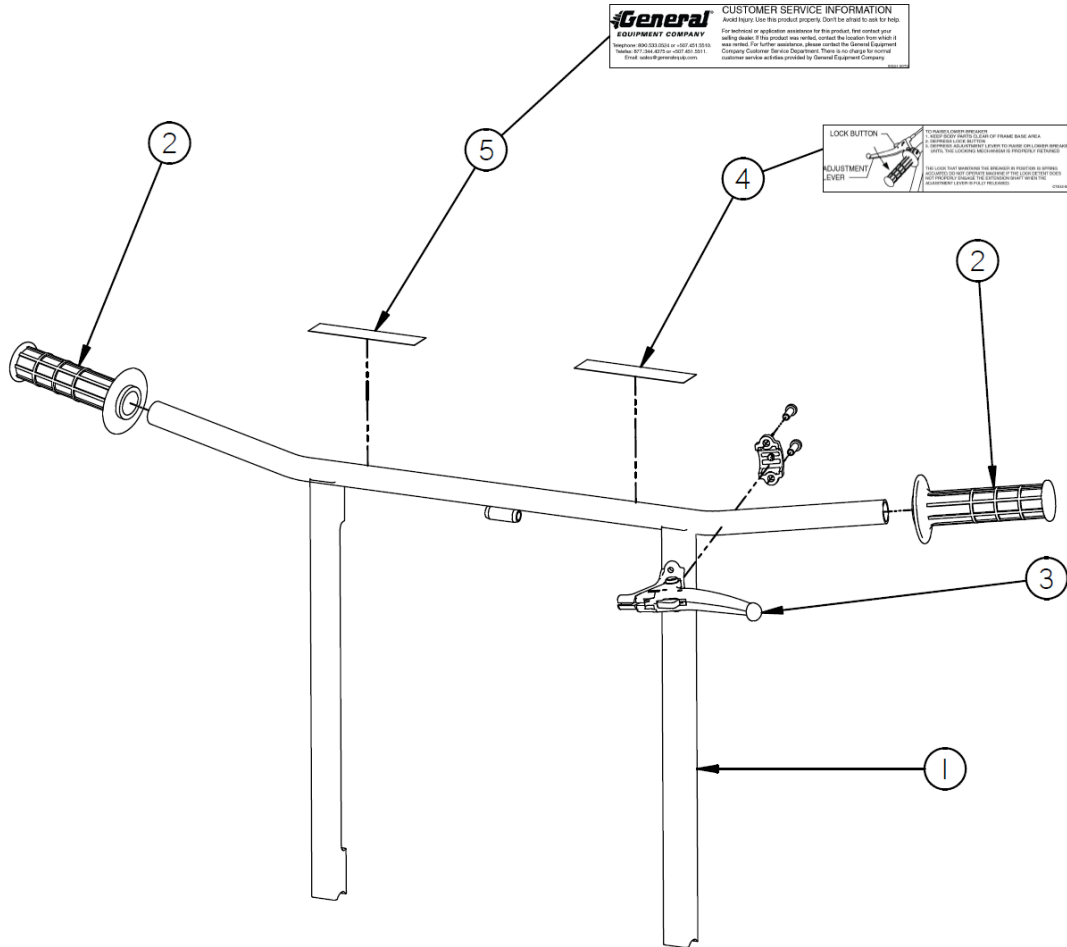
Reference Number	Part Number	Description	Quantity
1	SG12-0110	Weldment, Handle, Adjustable	1
2	310-0030	Assembly, Control, Throttle, Complete	1
3	SG12-0415	Grip, Handle	1
4	CTS12-0190	Assembly, Lever, Brake	1

Replacement Parts Diagram Plastic Body Series 314 Magura Throttle Control Assembly



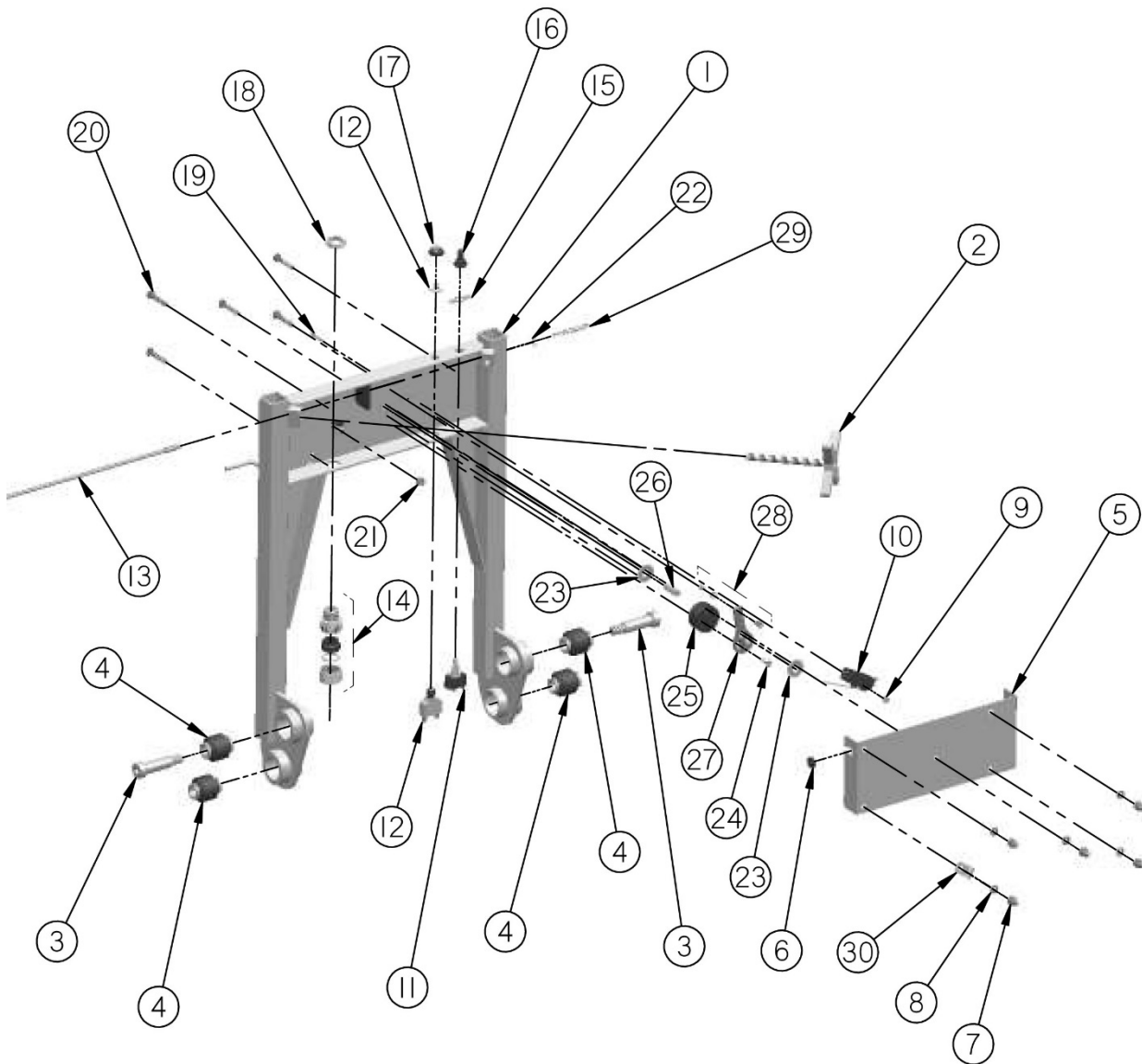
Reference Number	Part Number	Description	Quantity
1	310-0030-010-A	Assembly, Body, W/Screws (Includes P/N 310-0030-040, Qty 2)	1
2	310-0030-020-A	Tube, Throttle, W/Grip (Included P/N 310-0020-030)	1
3	310-0020-030	Grip, Throttle	1
4	310-0030-040	Screw, Head, PAM, M5 x 20	2
5	310-0030-050	Screw, Self Tapping	1
6	310-0030-060	Cover, Top	1
7	310-0030-070	Sheave, Roller	1
8	310-0030-080	Boot, Rubber	1

Replacement Parts Diagram Upper Handle Assembly [Starting with Serial Number 153106]



Reference Number	Part Number	Description	Quantity
1	SG12-0111	Weldment, Handle, Adjustable	1
2	SG12-0415	Grip, Handle	2
3	CTS12-0190	Assembly, Lever, Brake	1
4	CTS12-5020	Decal, Lever	1
5	SG24-5072	Decal, Assistance	1

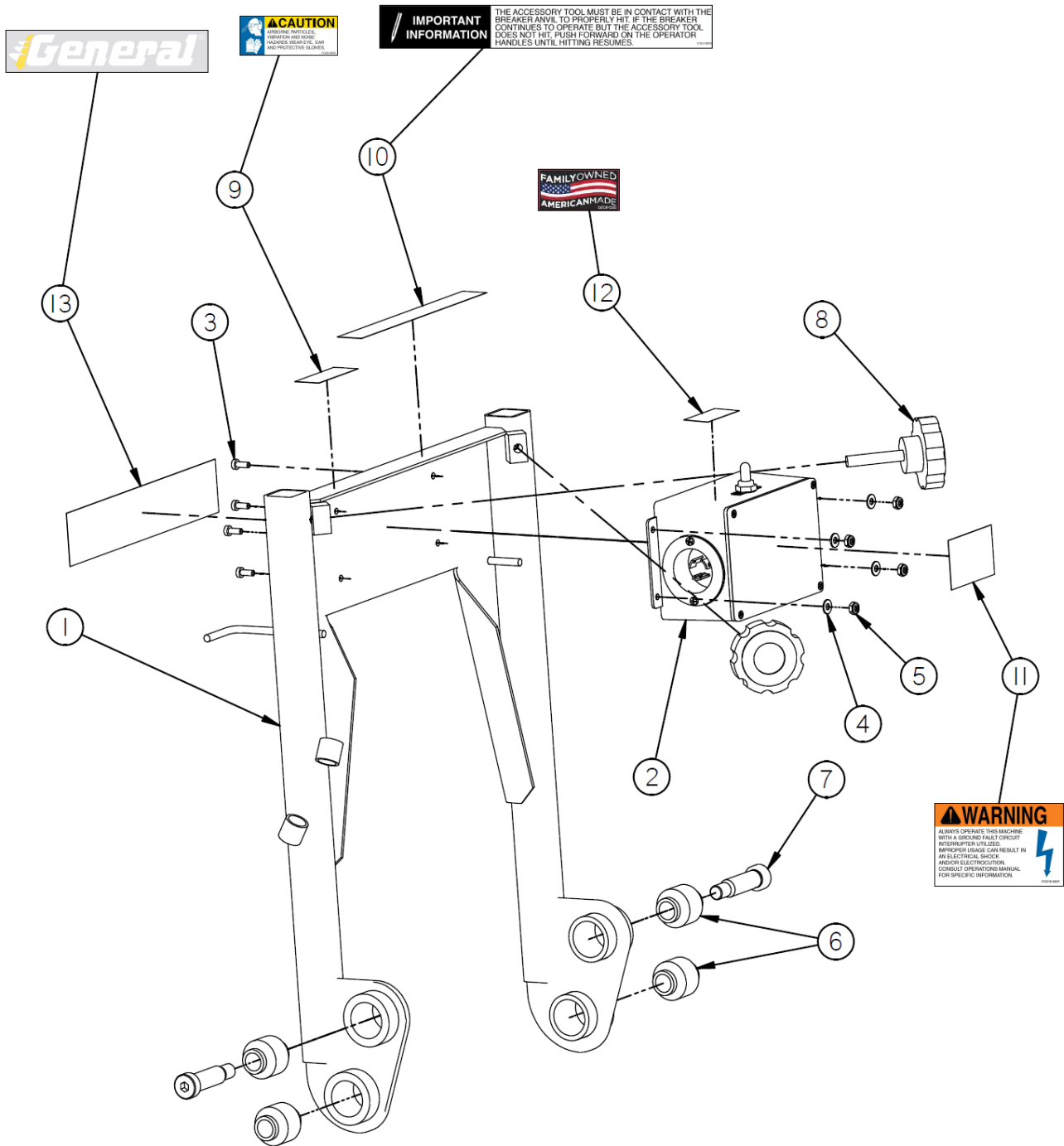
Replacement Parts Diagram Lower Handle Assembly [Up Through Serial Number 153105]



Replacement Parts Diagram Lower Handle Assembly [Up Through Serial Number 153105]

Reference Number	Part Number	Description	Quantity
1	CTS12-0050	Handle, Lower	1
2	SG12-0051	Weldment, Knob	2
3	62101400	Bolt, Shoulder, 5/8" x 1-1/4", Plated	2
4	CTS12-0280	Mount, Elastomeric	4
5	SG12-0191	Cover, Switch	1
6	FCS16-0300	Grommet, Rubber	1
7	90040000	Nut, Acorn, 1/4-20 UNC, Brass	5
8	16040000	Washer, Lock, 1/4", Plated	5
9	12010000	Nut, #6-32, K-Lock	2
10	SG12-0070	Switch	1
11	SG12-0300-010	Switch, Master	1
12	SG12-0080	Breaker, Circuit	1
13	310-0081	Cable, Throttle	1
14	CG-5050	Relief, Strain	2
15	SG12-0300-030	Plate, Face, Switch, Master	1
16	SG12-0300-020	Cover, Switch, Master	1
17	SG12-0090	Cover, Breaker, Circuit	1
18	801	Nut, Bulkhead	2
19	34010800	Screw, Machine, Head, Socket, #6 x 1", Plated	2
20	37041300	Screw, Machine, Head,- 1/4-20 UNC, x 1-5/8", Plated	5
21	18040000	Nut, Hexagon, 1/4-20 UNC, Plated	1
22	SG12-0340	Clip, E-Type	1
23	17060000	Washer, Flat, 3/8"	2
24	SG12-0170	Cam, Switch	2
25	SG12-0380	Screw, Wood, Flat Head	1
26	SG12-0150	Tube, Pivot	1
27	SG12-0160	Lever, Switch	1
28	WS277	Swivel	1
29	SG12-0350	Spring, Compression	1
30	COV-0411	Clamp	1

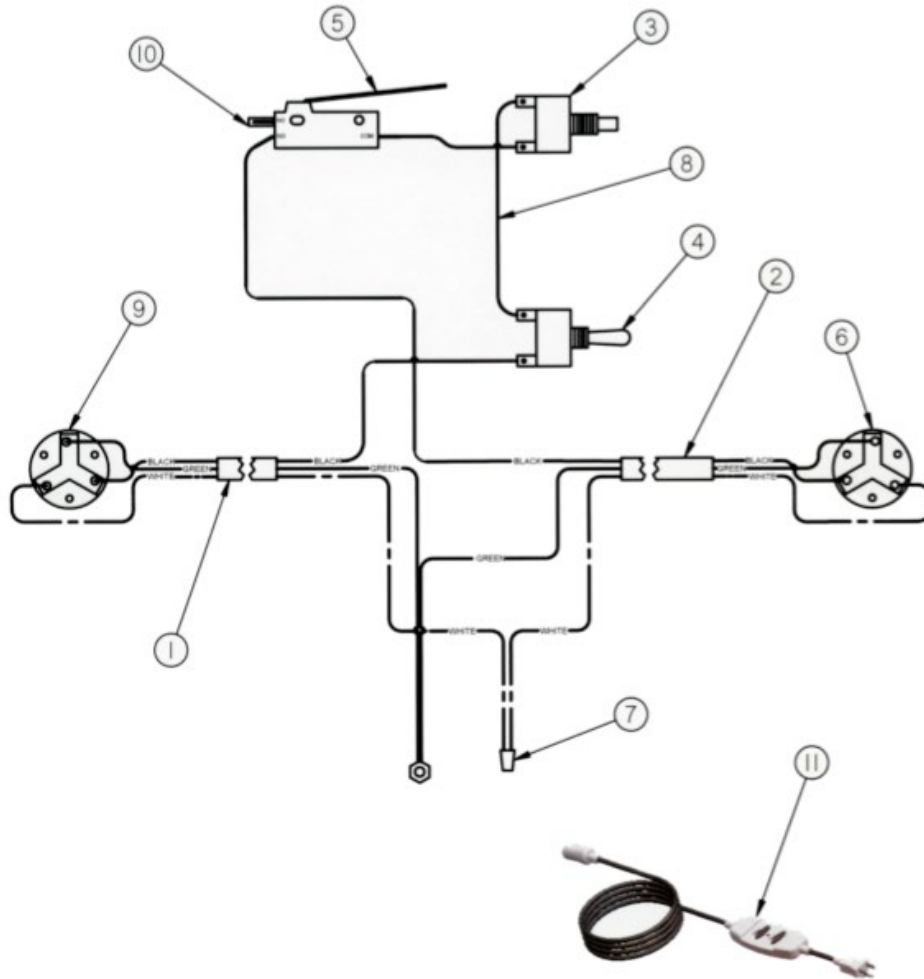
Replacement Parts Diagram Lower Handle Assembly [Starting with Serial Number 153106]



Replacement Parts Diagram Lower Handle Assembly [Starting with Serial Number 153106]

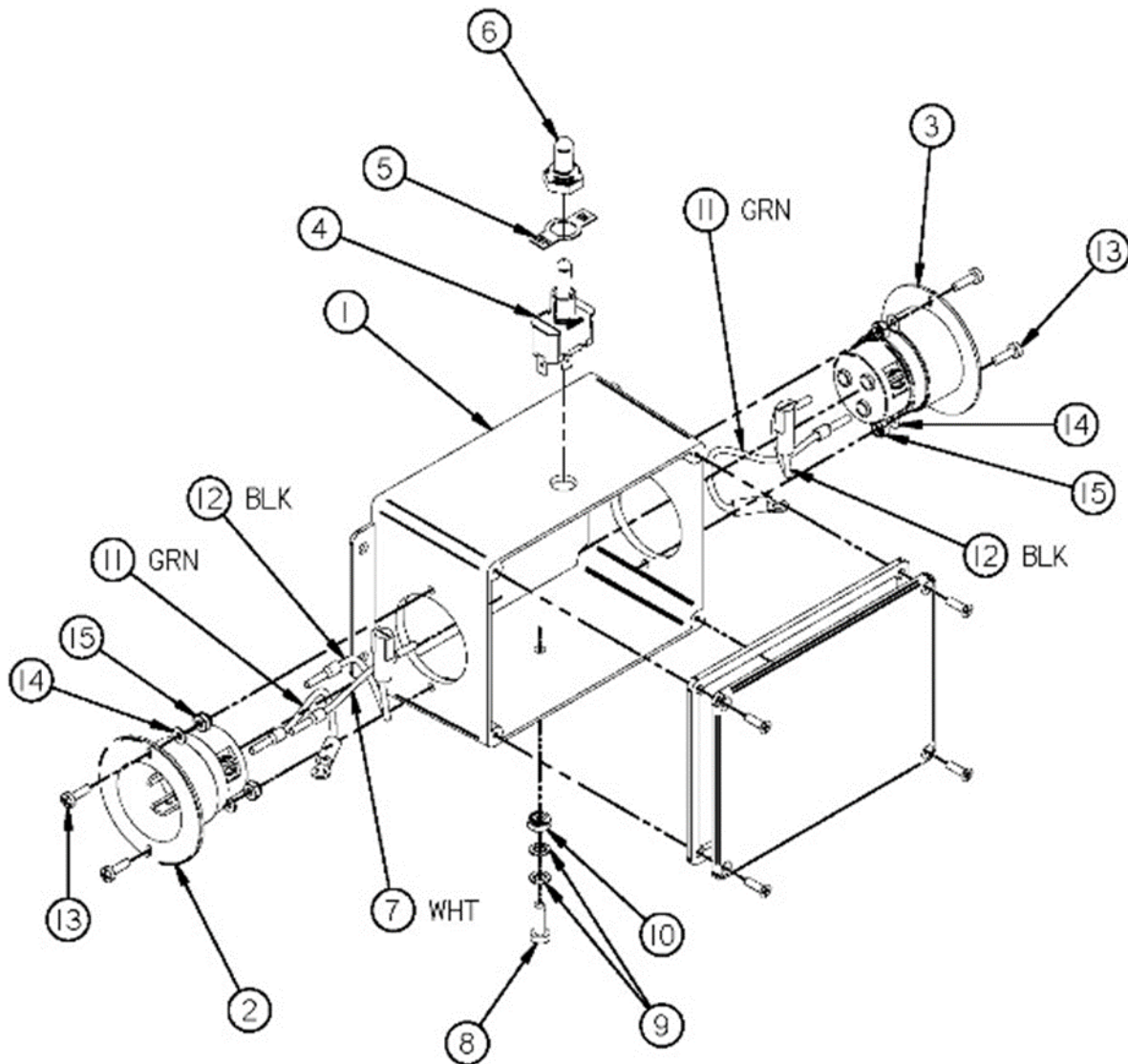
Reference Number	Part Number	Description	Quantity
1	CTS12-0051	Handle, Lower	1
2	CTS12-0481A	Assy, Enclosure, Electric, US	1
3	37030400	PHMS, 10-24 X 1/2, ZY	4
4	17030000	Washer, Flat, Light, No 10, ZY	4
5	53030000	Nut, Hex, Nylok, 10-24, ZY	4
6	CTS12-0280	Mount, Rubber, 60 Durometer	4
7	62101400	Bolt, Shldr, 5/8 X 1-3/4, ZY	2
8	FCS16-0150	Knob, Adjustment	2
9	FCS5-5020	Decal, Caution	1
10	CTS12-5070	Decal, Operation	1
11	FCS16-5031	Decal, Warning, Shock	1
12	GECD-5050	Decal, Family Owned, American	1
13	GECD-5030W	Decal, General, 1-7/8 X 9-1/2	1

Replacement Parts Diagram Wiring Diagram [Up Through Serial Number 153105]



Reference Number	Part Number	Description	Quantity
1	CTS12-0480A	Cable, Electrical, Assembly (Male Plug to Switch)	1
2	CTS12-0470A	Cable, Electrical, Assembly (Switch to Female Plug)	1
3	SG12-0080	Circuit Breaker, 15 AMP	1
4	SG12-0300-010	Switch, Master Toggle	1
5	SG12-0070	Switch, 115V	1
6	CTS12-0340	Receptacle, Cord, Female, 5269C	1
7	WIRE NUT Y	Nut, Wire	1
8	SG12-0290A	Wire, Jumper	1
9	HUB-4720C	Plug, Twist Lock, Male, 15A	1
10	SG12-0320	Sleeve, Protective	1
11	FCS16-1000	Extension Cord, GFCI	1

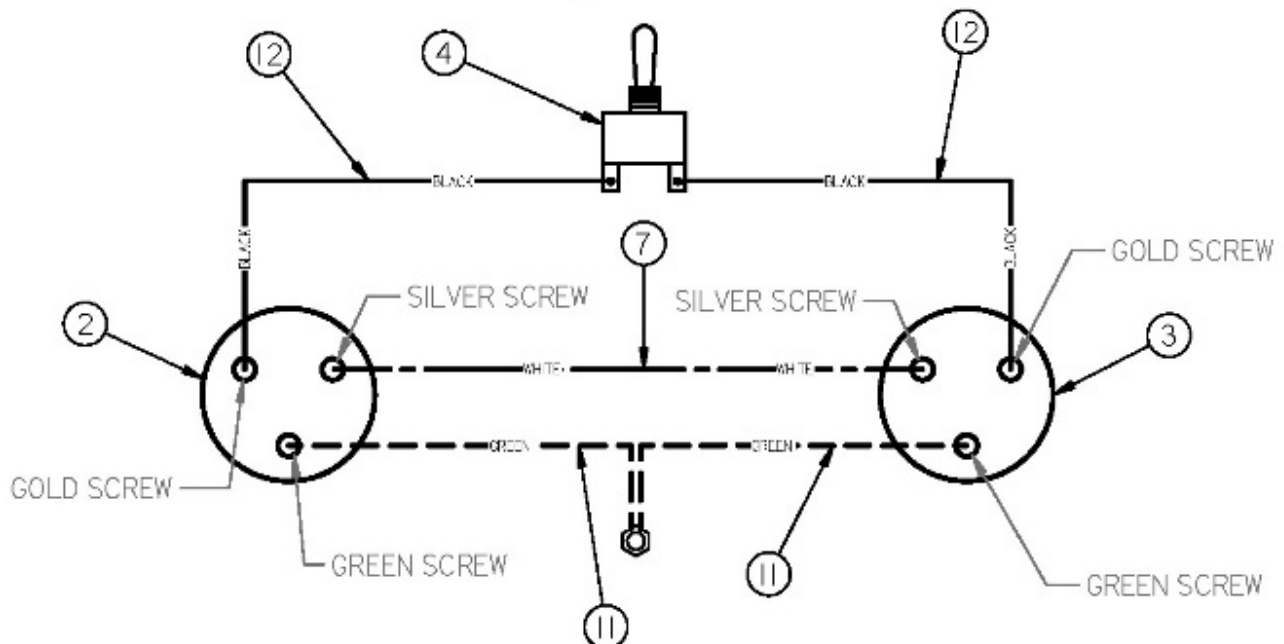
*Replacement Parts Diagram
US Electrical Control Enclosure
CTS12-0481A
[Starting with Serial Number 153106]*



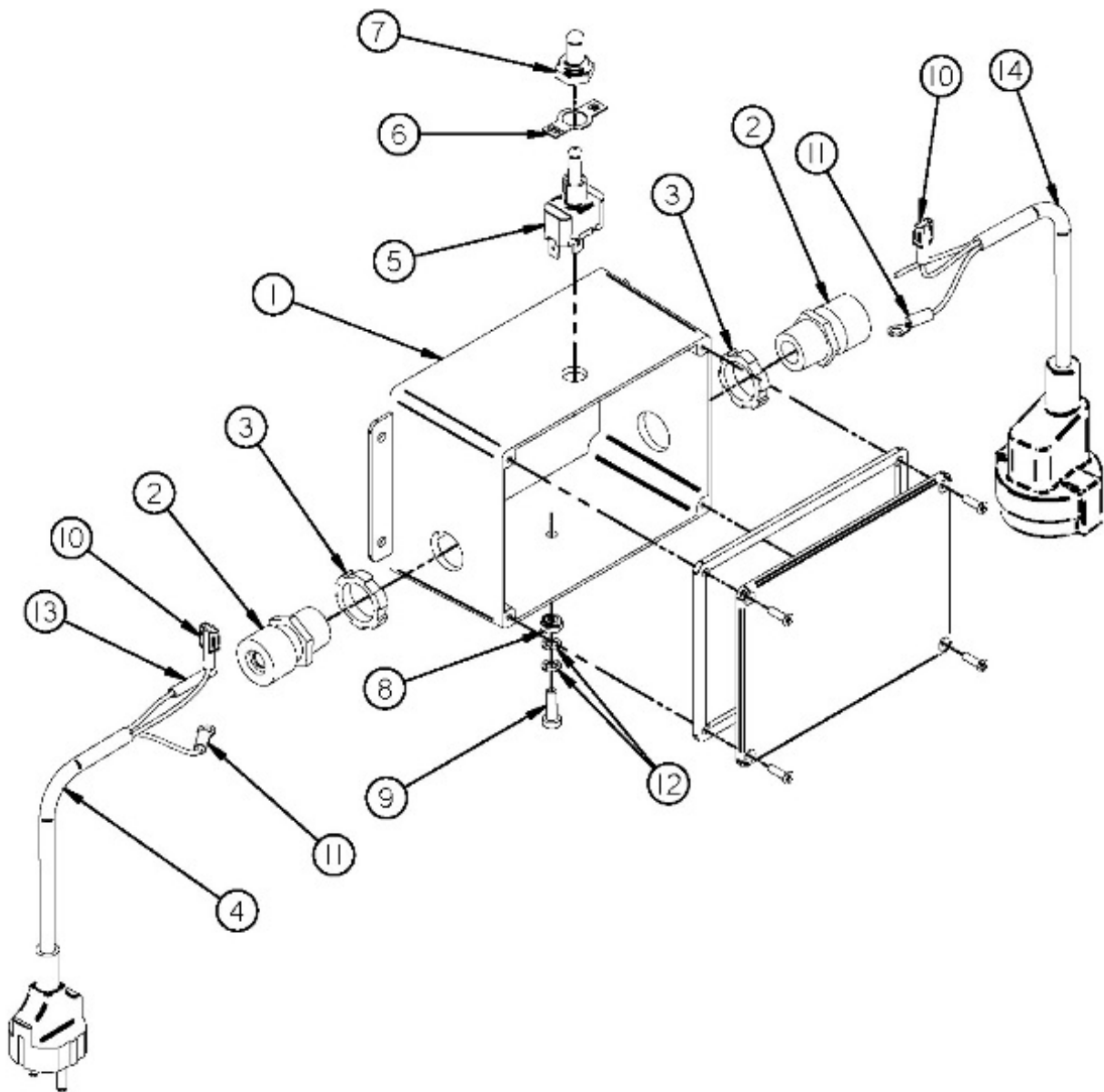
Replacement Parts Diagram US Electrical Control Enclosure CTS12-0481A [Starting with Serial Number 153106]

Reference Number	Part Number	Description	Quantity
1	CTS12-0481-010	Enclosure, Electrical	1
2	CTS12-0481-020	Inlet, Electric, Nema L5-15P	1
3	CTS12-0481-030	Outlet, Electric, Nema 5-15R	1
4	SG12-0300-010	Switch, Master	1
5	SG12-0300-030	Plate, Face, Switch, Master	1
6	SG12-0300-020	Cover, Switch	1
7	CTS12-0481-060	Assembly, Wire, Neutral	1
8	37030500	PHMS, 10-24 X 5/8	1
9	58030000	Washer, Lock, Internal, Serrated	2
10	53030000	Nut, Hex, Nylok, 10-24, ZY	1
11	CTS12-0481-050	Assembly, Wire, Ground	2
12	CTS12-0481-040	Assembly, Wire, Line	2
13	37010400	PHMS, 6-32 X 1/2	4
14	17010000	Washer, Flat, No 6	4
15	1801000	Nut, Hex, No 6-32	4

Wiring Schematic



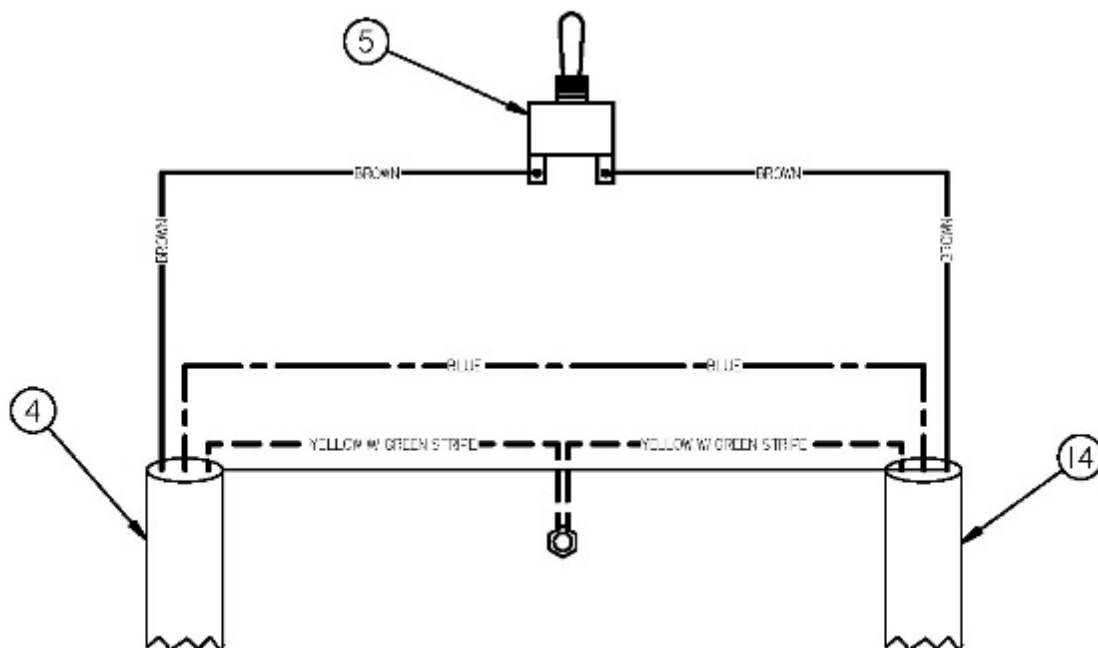
*Replacement Parts Diagram
EU Electrical Control Enclosure
CTS12-0482A
[Starting with Serial Number 153106]*



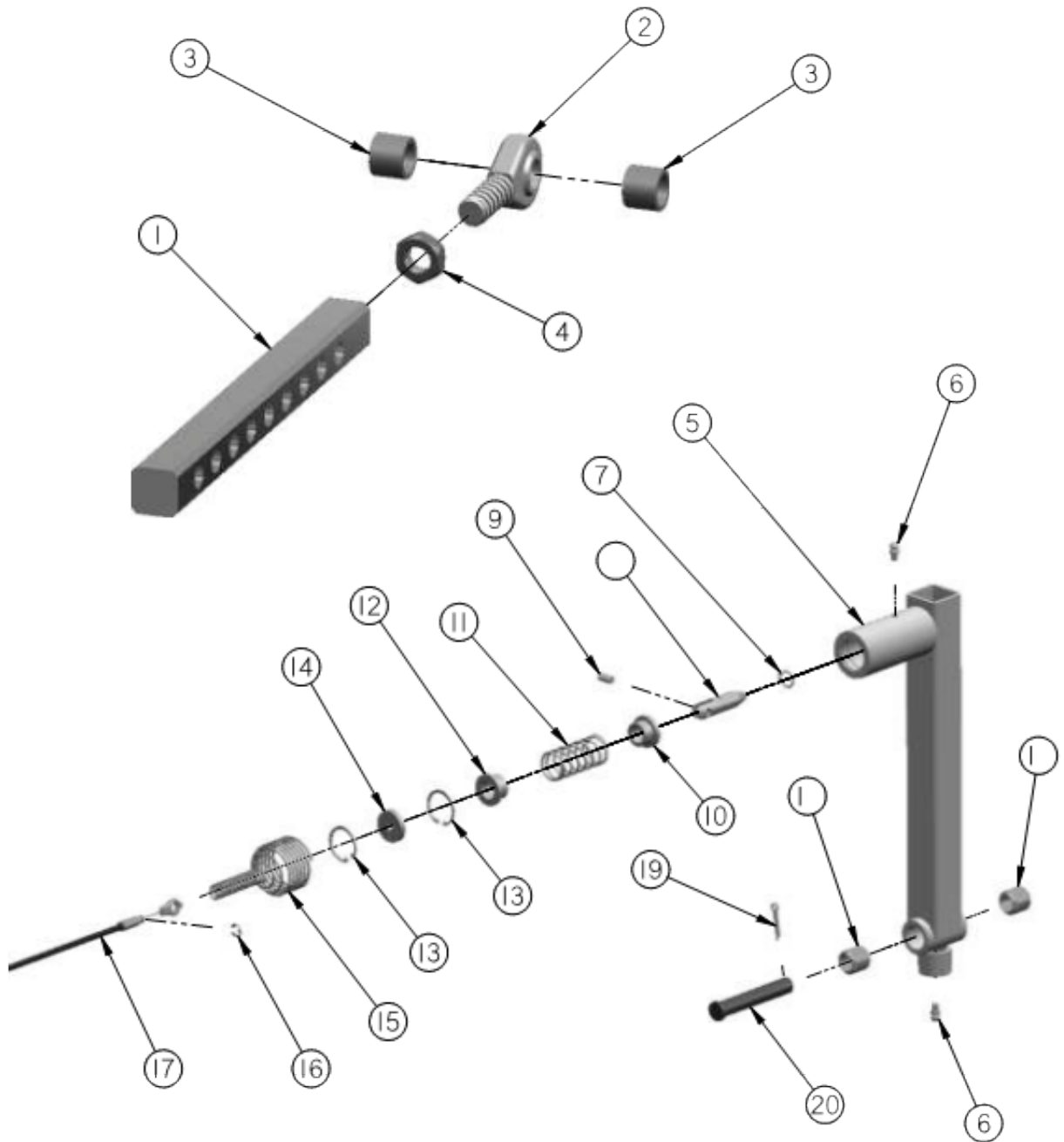
*Replacement Parts Diagram
 EU Electrical Control Enclosure
 CTS12-0482A
 [Starting with Serial Number 153106]*

Reference Number	Part Number	Description	Quantity
1	CTS12-0482-010	Enclosure, Electrical	1
2	CG-1850	Grip, Cord	2
3	801	Nut, Grip, Cord	2
4	CTS12-0482-020CP	Plug, Male, EU	1
5	SG12-0300-010	Switch, Master	1
6	SG12-0300-030	Plate, Face, Switch, Master	1
7	SG12-0300-020	Cover, Switch	1
8	53030000	Nut, Hex, Nylok, 10-24, ZY	1
9	37030500	PHMS, 10-24 X 5/8	1
10	16-14F250X032	Terminal, Female, Ins, Push On	2
11	16-14X10	Terminal, Ring, Ins, No 10	2
12	58030000	Washer, Lock, Internal, No 10	2
13	31781	Connector, Butt, 16-14 Ga	1
14	CTS12-0482-030CP	Receptacle, Female, EU	1

Wiring Schematic



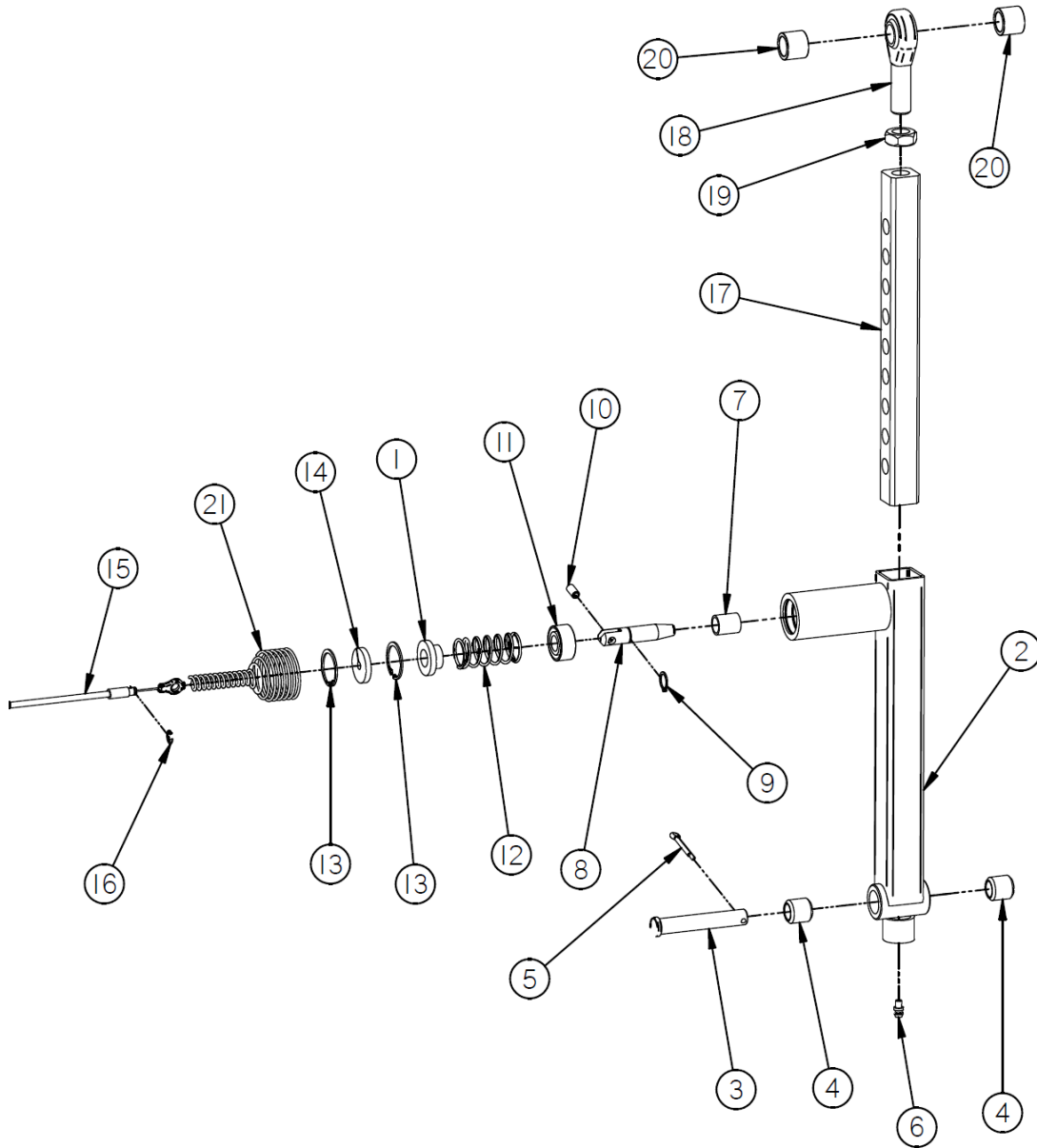
Replacement Parts Diagram Latch Tube Assembly [Up Through Serial Number 141417]



Replacement Parts Diagram Latch Tube Assembly [Up Through Serial Number 141417]

Reference Number	Part Number	Description	Quantity
1	CTS12-0090	Bar, Latch	1
2	SP8-0180	End, Rod, Male	1
3	CTS12-0170	Tube, Spacer	2
4	40100011	Nut, Jam, 5/8-11 UNC, LH, Plated	1
5	CTS12-0120	Weldment, Tube, Base	1
6	550-0590	Fitting, Grease	2
7	CTS12-0290	Ring, Snap, External, 0.5" ID	1
8	CTS12-0130	Pin, Latch	1
9	20040400	Pin, Roll, 1/4" x 1/2"	1
10	CTS12-0150	Guide, Pin, Inboard	1
11	CTS12-0260	Spring, Compression	1
12	CTS12-0160	Guide, Pin, Outboard	1
13	CTS12-0270	Ring, Snap, Internal. 1.0 ID	2
14	CTS12-0140	Mount, Cable	1
15	CTS12-0370	Spring, Support	1
16	SG12-0340	Clip, E-Type	1
17	CTS12-0080	Cable, Adjustment	1
18	CTS12-0360	Bushing, Spring-Type, 0.5 ID	2
19	22000800	Pin, Cotter, 5/32" x 1"	1
20	CTS12-0210	Pin, Clevis, 1/2" x 3", Plated	1

Replacement Parts Diagram Latch Tube Assembly [Starting with Serial Number 141418]

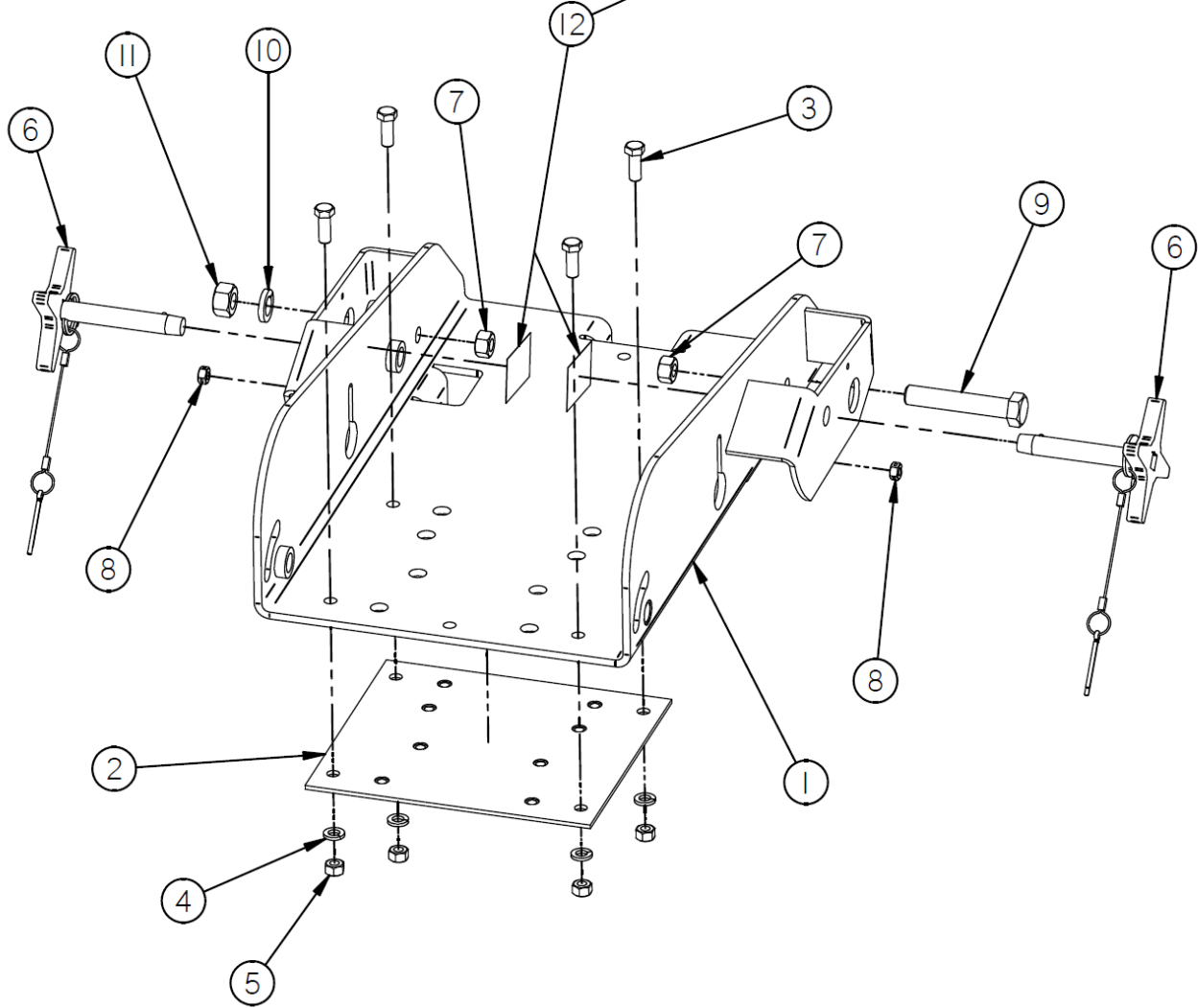


*Replacement Parts Diagram
 Latch Tube Assembly
 [Starting with Serial Number 141418]*

Reference Number	Part Number	Description	Quantity
1	CTS12-0161	Guide, Pin, Outer	1
2	CTS12-0121	Tube, Support	1
3	CTS12-0210	Pin, Clevis, 1/2 X 3, ZY	1
4	CTS12-0360	Bushing, Spring-Type	2
5	22000800	Pin, Cotter, 5/32 X 1.0	1
6	550-0590	Fitting, Grease	1
7	CTS12-0610	Bushing, Oilite, 0.5 ID	1
8	CTS12-0131	Pin, Latch	1
9	CTS12-0290	Ring, Snap, External, .5 D	1
10	20040400	Pin, Roll, 1/4 X 1/2	1
11	CTS12-0151	Pin, Guide, Inner	1
12	CTS12-0261	Spring, Compression	1
13	CTS12-0271	Ring, Snap, Internal, 1.125 D	2
14	CTS12-0141	Mount, Cable	1
15	CTS12-0080	Cable, Adjustment	1
16	SG12-0340	Clip, E-Type	1
17	CTS12-0091	Bar, Latch	1
18	SP8-0180	End, Rod, Male	1
19	40100011	Nut, Jam, 5/8-18, LH	1
20	CTS12-0170	Tube, Spacer	2
21	CTS12-0370	Spring, Support	1

Replacement Parts Diagram Upper Frame Assembly

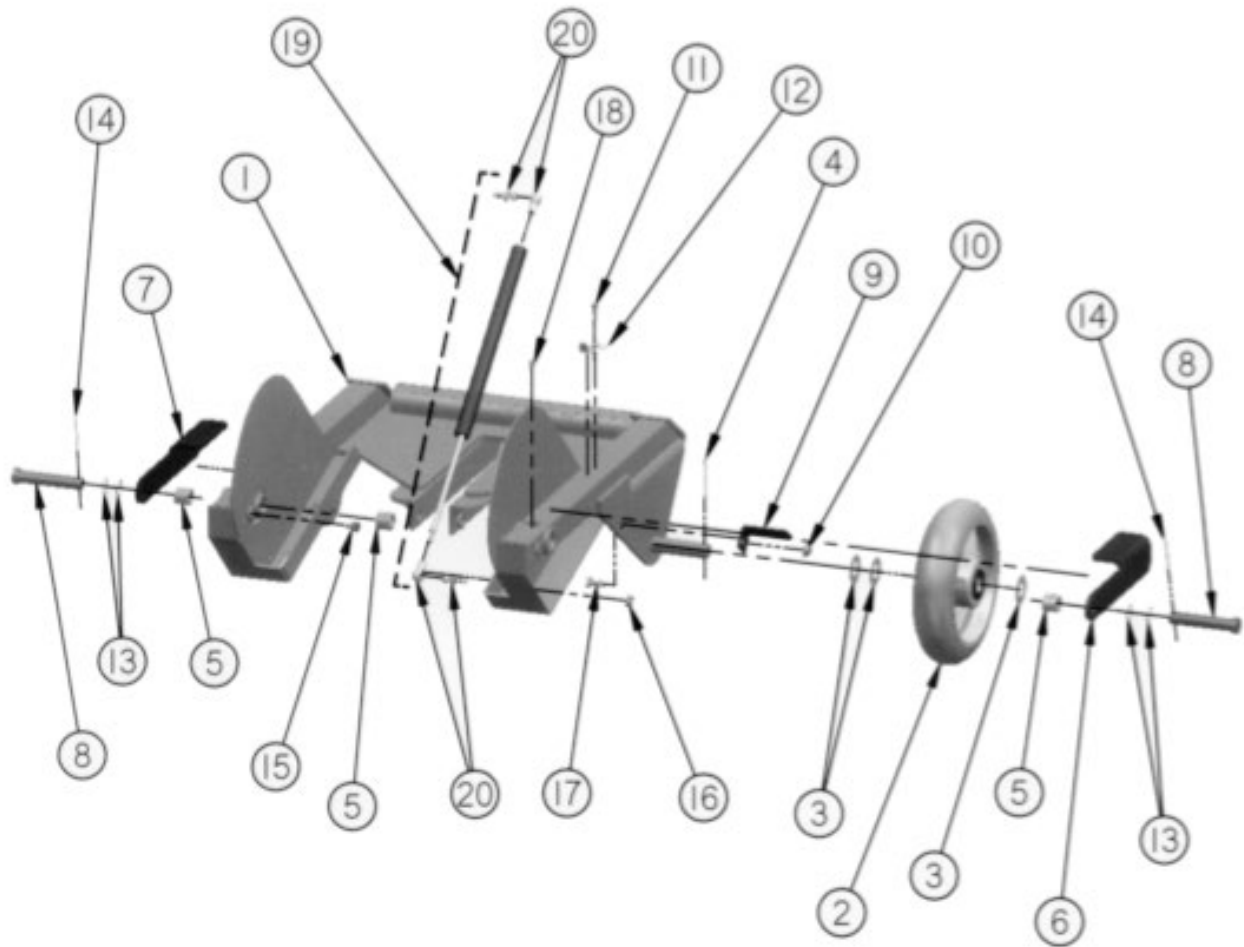
⚠ WARNING
BEFORE HOISTING THIS MACHINE
CONSULT THE APPLICABLE
OPERATOR MANUAL. IMPROPER
HOISTING PROCEDURES CAN RESULT
IN PROPERTY DAMAGE AND/OR
PERSONAL INJURY.



Replacement Parts Diagram Upper Frame Assembly

Reference Number	Part Number	Description	Quantity
1	CTS12-0110	Weldment, Plate, Hammer	1
2	CTS12-0060	Plate, Attachment	1
3	15060800	HHCS, 3/8-16 X 1, G5, ZY	4
4	1606000	Washer, Lock, 3/8, ZY	4
5	18060000	Nut, Hex, 3/8-16, ZY	4
6	CTS12-0250A	Assembly, Pin, Detent	2
7	52080000	Nut, Lock, 2-Way, 1/2-13, ZY	2
8	52050000	Nut, Lock, 2-Way, 5/16-20, ZY	2
9	15102800	HHCS, 5/8-11 X 3-1/2, G5, ZY	1
10	16100000	Washer, Lock, 5/8, ZY	1
11	18100000	Nut, Hex, 5/8-11, ZY	1
12	CS8-5051	Decal, Warning, Hoisting	2

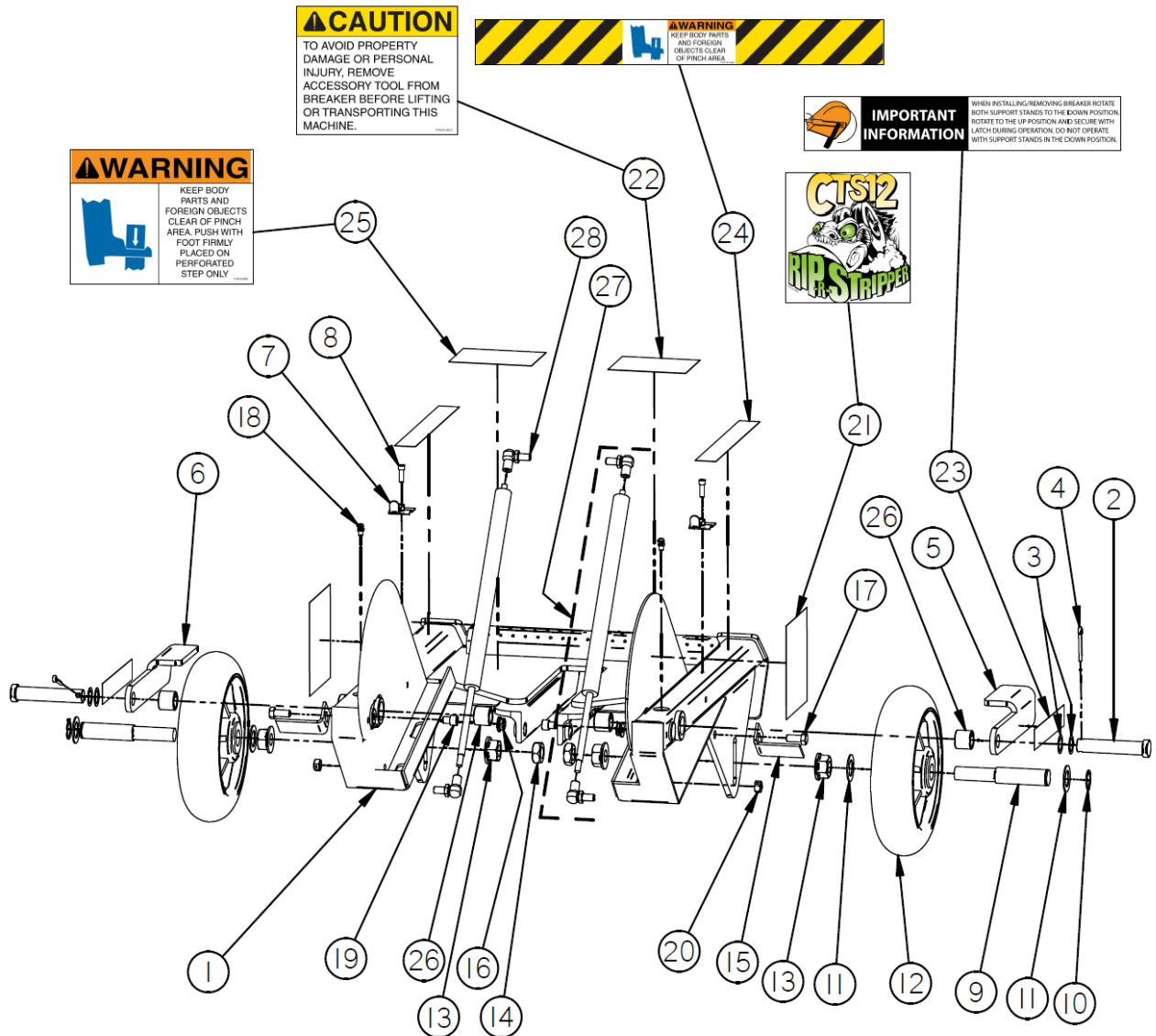
*Replacement Parts Diagram
Lower Frame Assembly
[Up Through Serial Number 153105]*



Replacement Parts Diagram Lower Frame Assembly [Up Through Serial Number 153105]

Reference Number	Part Number	Description	Quantity
1	CTS12-0100	Weldment, Frame	1
2	CTS12-0600	Wheel	2
3	200682	Washer, Plastic	6
4	22021200	Pin, Cotter, 1/8" x 1-1/2"	2
5	CTS12-0350	Bushing, Spring-Type, .62 ID	4
6	CTS12-0430	Stand, Kick, LH	1
7	CTS12-0440	Stand, Kick, RH	1
8	CTS12-0200	Pin, Clevis, 5/8" x 3", ZY	2
9	FCS16-0090	Scraper, Wheel	2
10	39050000	Nut, Hexagon, Flange, 5/16-18 UNC, Plated	2
11	60030500	Screw, Cap, Socket, #10-24 x 5/8", Plated	2
12	CTS12-0460	Latch, Down, Snap	2
13	CTS12-0450	Washer, Wave, .62 ID	4
14	22000800	Pin, Cotter, 5/32" x 1", Plated	2
15	60050300	Screw, Cap, Socket, 5/16-18 x 3/8", Plated	2
16	52050000	Nut, Lock, 2-Way, 5/16-18 UNC, Plated	2
17	15050600	Screw, Cap, 5/16-18 UNC x 3/4", Plated	2
18	550-0590	Fitting, Grease	2
19	CTS12-0220A	Assembly, Spring, Gas (Includes 2 of Part Number CTS12-0220-010)	2
20	CTS12-0220-010	Kit, Mounting, Spring, Gas (Includes 1 Ball Socket and 1 ball Stud)	4

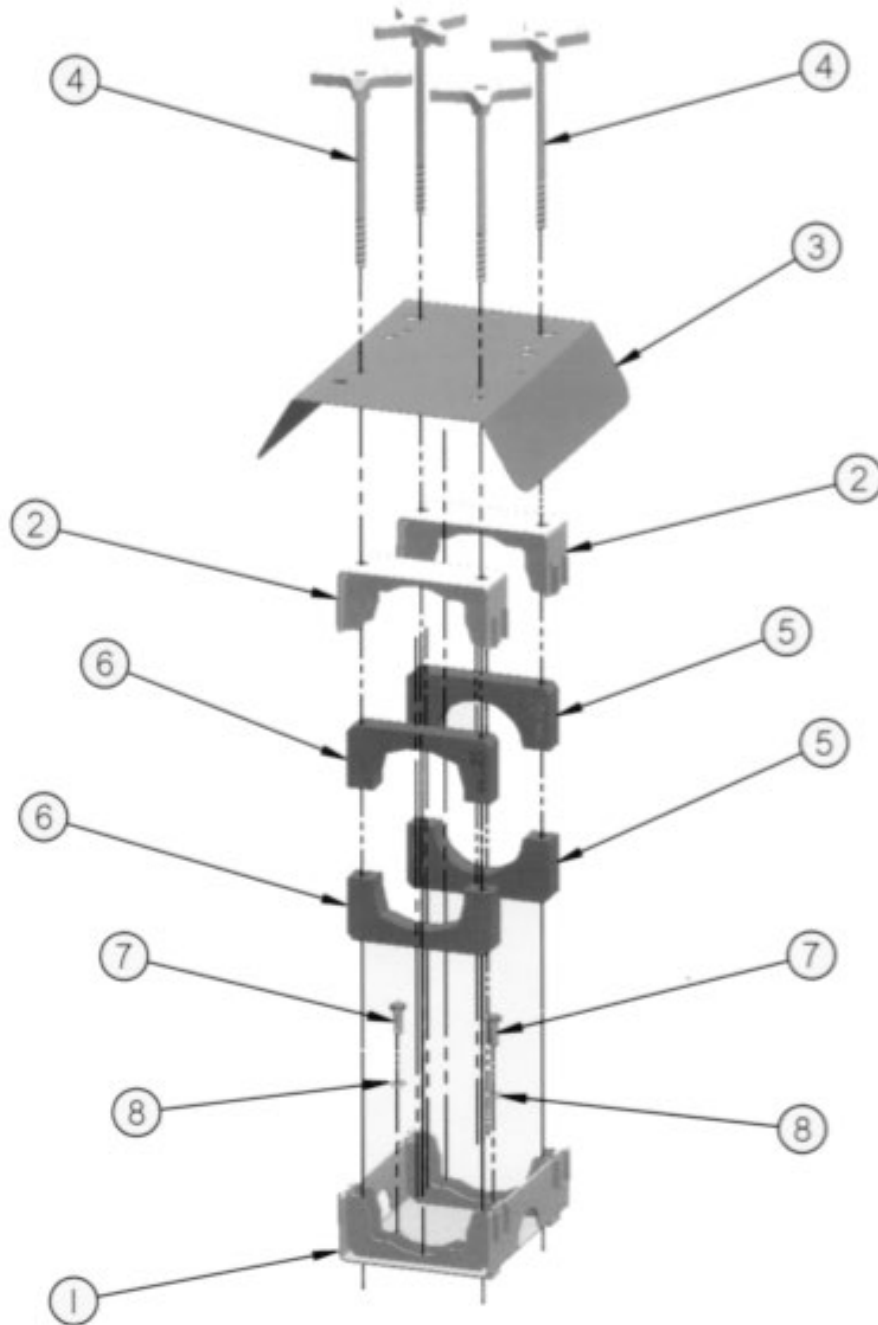
Replacement Parts Diagram Lower Frame Assembly [Starting With Serial Number 153106]



*Replacement Parts Diagram
 Lower Frame Assembly
 [Starting with Serial Number 153106]*

Reference Number	Part Number	Description	Quantity
1	CTS12-0101	Weldment, Frame	1
2	CTS12-0200	Pin, Clevis, 5/8 X 3, ZY	2
3	CTS12-0450	Washer, Wave, 5/8	4
4	22000800	Pin, Cotter, 5/32 X 1.0	2
5	CTS12-0430	Stand, Kick, Left Hand	1
6	CTS12-0440	Stand, Kick, Right Hand	1
7	CTS12-0460	Latch, Down, Snap	2
8	60030500	SHCS, 10-24 X 5/8, ZY	2
9	CTS12-0580	Axle, Wheel	2
10	5160-075	Ring, Snap, External, 3/4D	2
11	85120001	Bushing, Machine, 3/4NR	4
12	CTS12-0600	Wheel, 8 X 2	2
13	86100001	Nut, Hex, Flange, 5/8-18, ZY	4
14	40100001	Nut, Jam, Hex, 5/8-18, ZY	2
15	FCS16-0090	Scraper, Wheel	2
16	39050000	Nut, Whizlock, 5/16-18, ZY	2
17	15050600	HHCS, 5/16-18 X 3/4	2
18	550-0590	Fitting, Grease	2
19	60050300	SHCS, 5/16-18 X 3/8, ZY	2
20	52050000	Nut, Lock, 2-Way, 5/16-20, ZY	2
21	CTS12-5050	Decal, Rip-R-Stripper (CTS12)	2
22	CTS12-5010	Decal, Transport	1
23	CTS12-5060	Decal, Kickstand	2
24	CTS12-5040	Decal, Feet Clear	2
25	CTS12-5030	Decal, Push	1
26	CTS12-0350	Bushing, Spring-Type	4
27	CTS12-0220A	Spring, Gas, 130 Lbs, Complete	2
28	CTS12-0220-010	Kit, Mounting, Spring, Gas	4

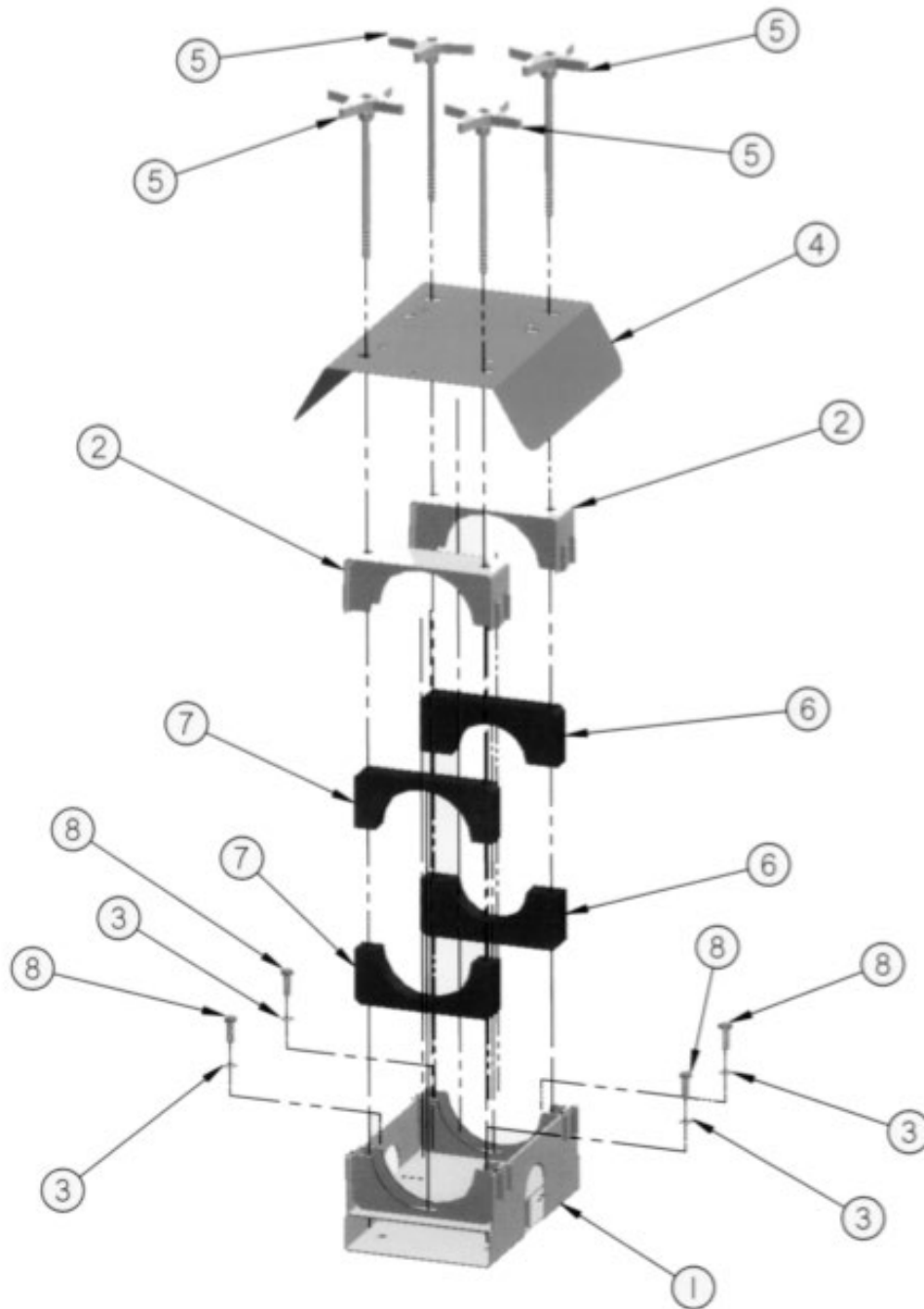
Replacement Parts Diagram Breaker Mount Assembly Bosch® 11335K, GSH 16-28



*Replacement Parts Diagram
 Breaker Mount Assembly
 Bosch® 11335K, GSH 16-28*

Reference Number	Part Number	Description	Quantity
1	CTS12-1200	Weldment, Mount, Base	1
2	CTS12-1001	Weldment, Clamp, CAP	2
3	CTS12-0040	Cover, Hammer	1
4	CTS12-0075	Screw, Clamp, 7.58" L	4
5	CTS12-0320	Block, Clamp, Elastomeric, 11335K, GSH 16-28, Bosch®	2
6	CTS12-0330	Block, Clamp, Elastomeric 11335K, GSH 16-28, Bosch®	2
7	15061000	Screw, Cap, 3/8-16 UNC x 1-1/4", Plated	2
8	16060000	Washer, Lock, 3/8", Plated	2

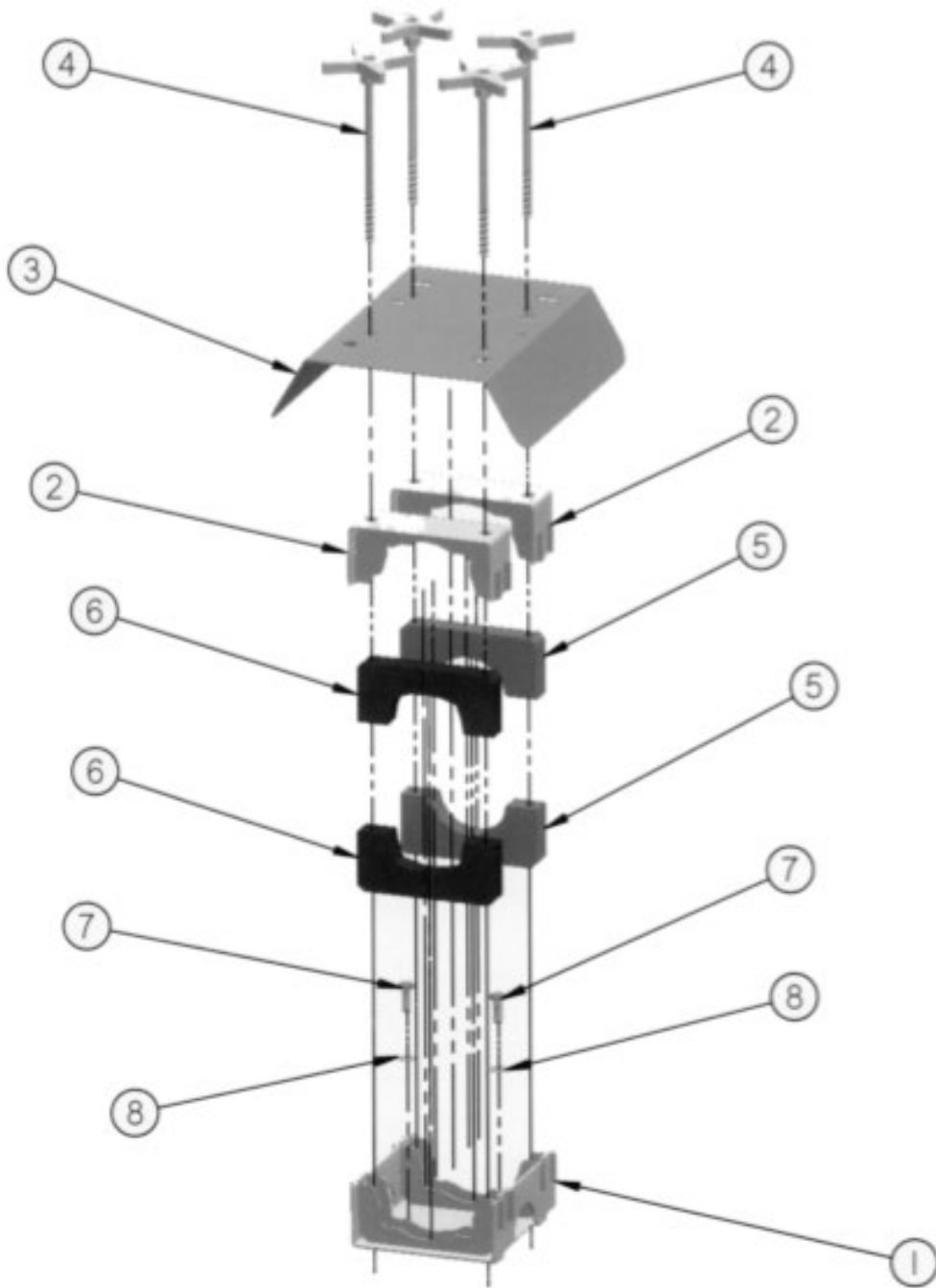
Replacement Parts Diagram Breaker Mount Assembly DeWalt® D25960K



*Replacement Parts Diagram
 Breaker Mount Assembly
 DeWalt® D25960K*

Reference Number	Part Number	Description	Quantity
1	CTS12-1700	Weldment, Mount, Base	1
2	CTS12-1701	Weldment, Clamp, Cap	2
3	16060000	Washer, Lock, 3/8", Plated	4
4	CTS12-0040	Cover, Hammer	1
5	CTS12-0070	Screw, Clamp 7.08" L	4
6	CTS12-0530	Block, Clamp, Elastomeric D25960K, DeWalt®, 1-3/4" Radius	2
7	CTS12-0520	Block, Clamp, Elastomeric D25960K, DeWalt®, 2-1/4" Radius	2
8	15060800	Screw, Cap, 3/8-16 UNC x 1-1/4", Plated	4

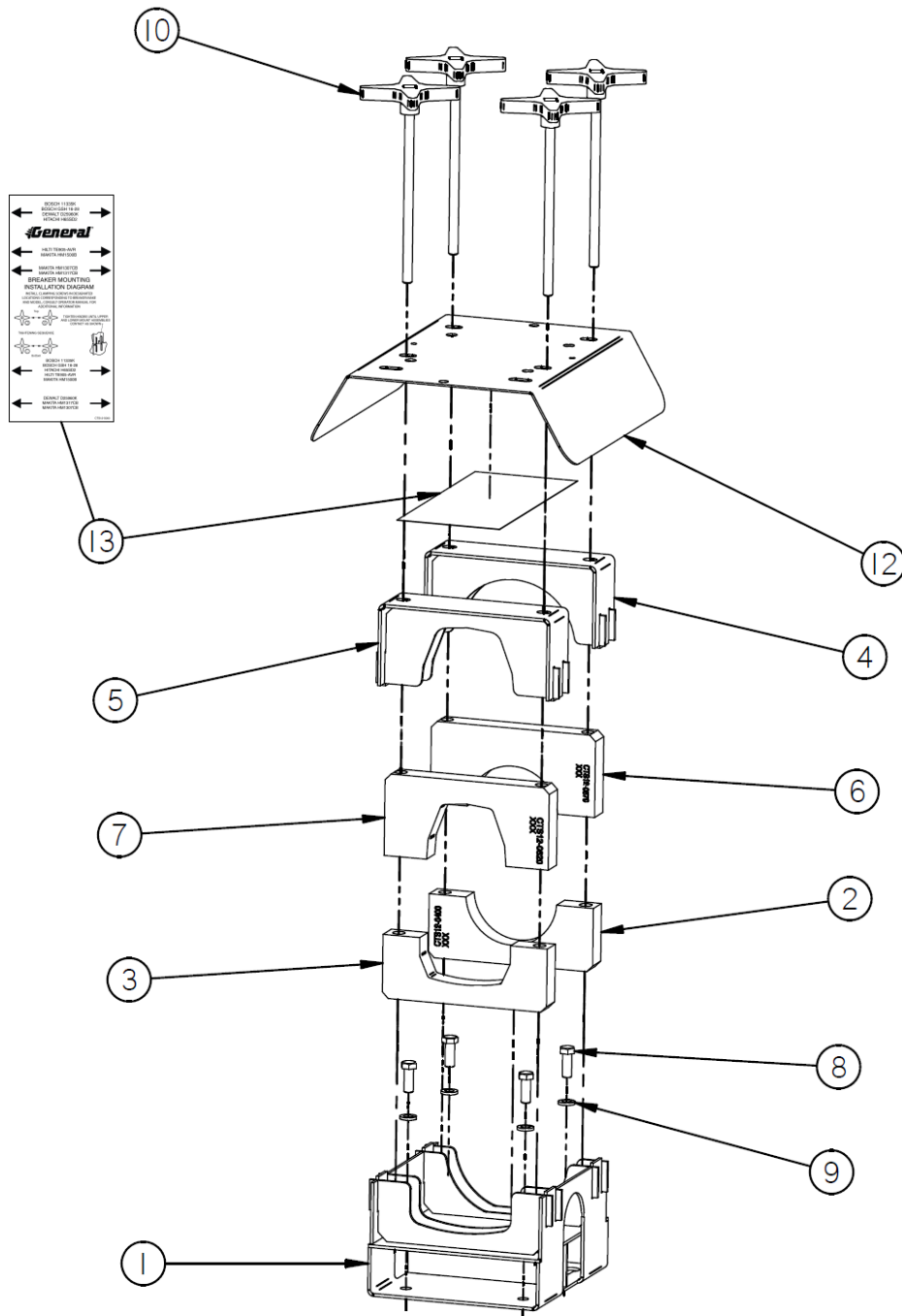
*Replacement Parts Diagram
Breaker Mount Assembly
Hilti® TE 905-AVR*



Replacement Parts Diagram
Breaker Mount Assembly
Hilti® TE 905-AVR

Reference Number	Part Number	Description	Quantity
1	CTS12-1000	Weldment, Mount, Base	1
2	CTS12-1001	Weldment, Clamp, Cap	2
3	CTS12-0040	Cover, Hammer	1
4	CTS12-0075	Screw, Clamp, 7.62 L	4
5	CTS12-0310	Block, Clamp, Elastomeric TE 905-AVR, Hilti®	2
6	CTS12-0380	Block, Clamp, Elastomeric TE 905-AVR, Hilti®	2
7	15061000	Screw, Cap, 3/8-16 UNC x 1-1/4", Plated	2
8	16060000	Washer, Lock, 3/8", Plated	2

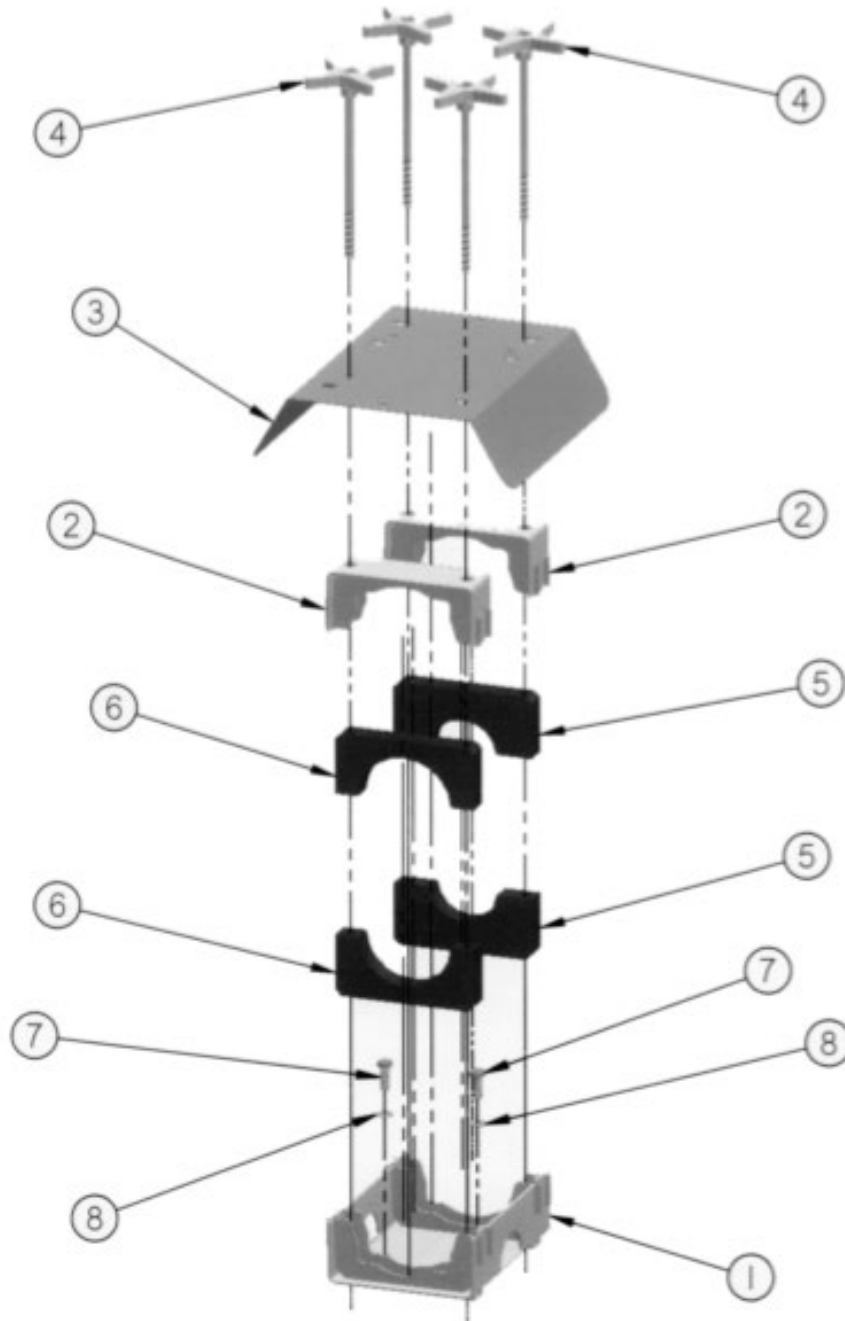
Replacement Parts Diagram Breaker Mount Assembly Hilti® TE 1000-AVR



*Replacement Parts Diagram
 Breaker Mount Assembly
 Hilti® TE 1000-AVR*

Reference Number	Part Number	Description	Quantity
1	CTS12-1410	Weldment, Mount, Base	1
2	CTS12-0400	Block, Clamp	1
3	CTS12-0391	Block, Clamp	1
4	CTS12-1403	Weldment, Clamp	1
5	CTS12-1404	Weldment, Clamp	1
6	CTS12-0570	Block, Clamp	1
7	CTS12-0620	Block, Clamp	1
8	15060800	HHCS, 3/8-16 X 1, G5, ZY	4
9	1606000	Washer, Lock, 3/8, ZY	4
10	CTS12-0075	Clamp, Screw	4
12	CTS12-0040	Cover, Hammer	1
13	CTS12-5080	Decal, Mount Locator	1

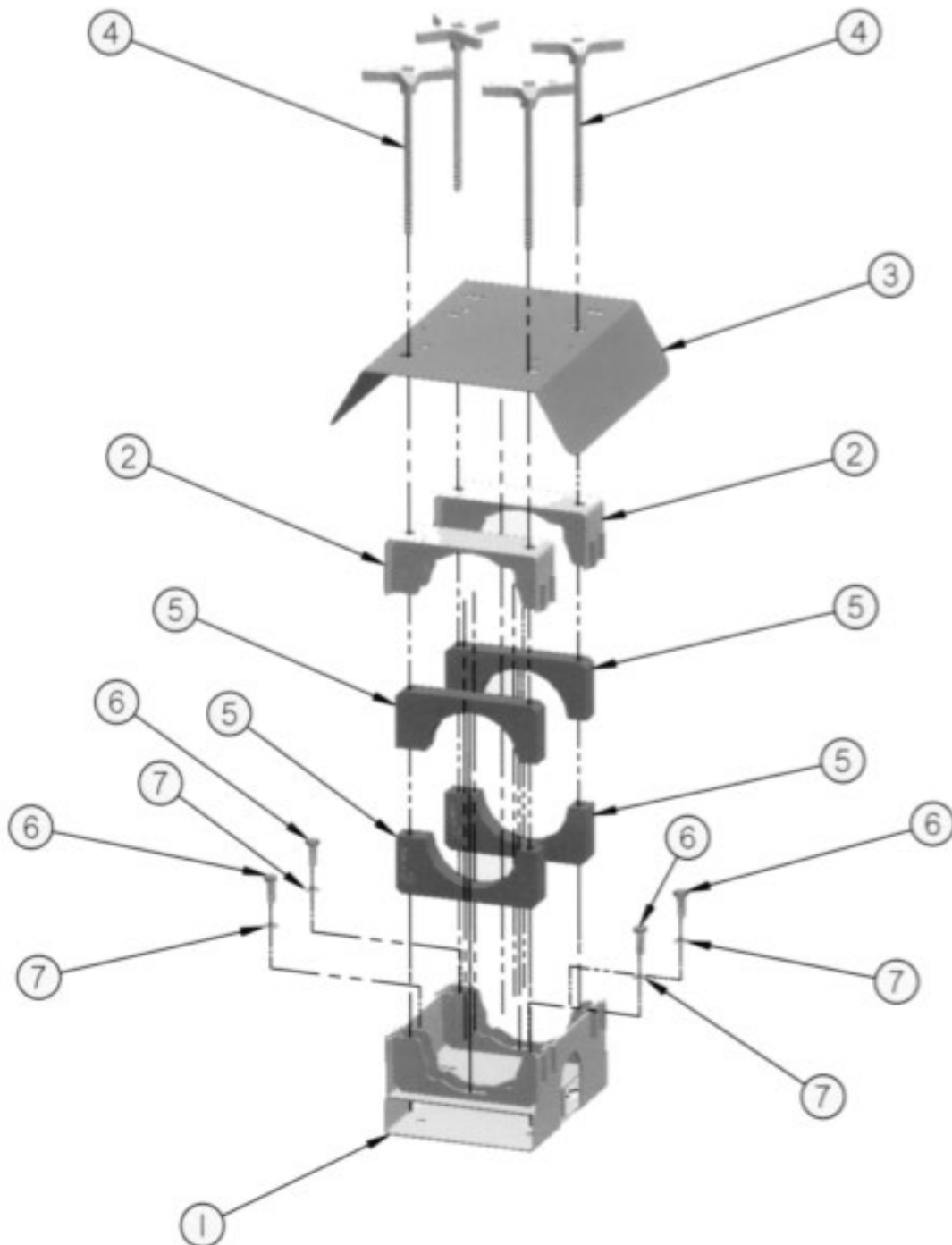
Replacement Parts Diagram Breaker Mount Assembly Hitachi® H65SD2



*Replacement Parts Diagram
 Breaker Mount Assembly
 Hitachi® H65SD2*

Reference Number	Part Number	Description	Quantity
1	CTS12-1200	Weldment, Mount, Base	1
2	CTS12-1001	Weldment, Clamp, CAP	2
3	CTS12-0040	Cover, Hammer	1
4	CTS12-0075	Screw, Clamp, 7.62 L	4
5	CTS12-0500	Block, Clamp, Elastomeric H65SD2, Hitachi®	2
6	CTS12-0510	Block, Clamp, Elastomeric H65SD2, Hitachi®	2
7	15061000	Screw, Cap, 3/8-16 UNC x 1-1/4", Plated	2
8	16060000	Washer, Lock, 3/8", Plated	2

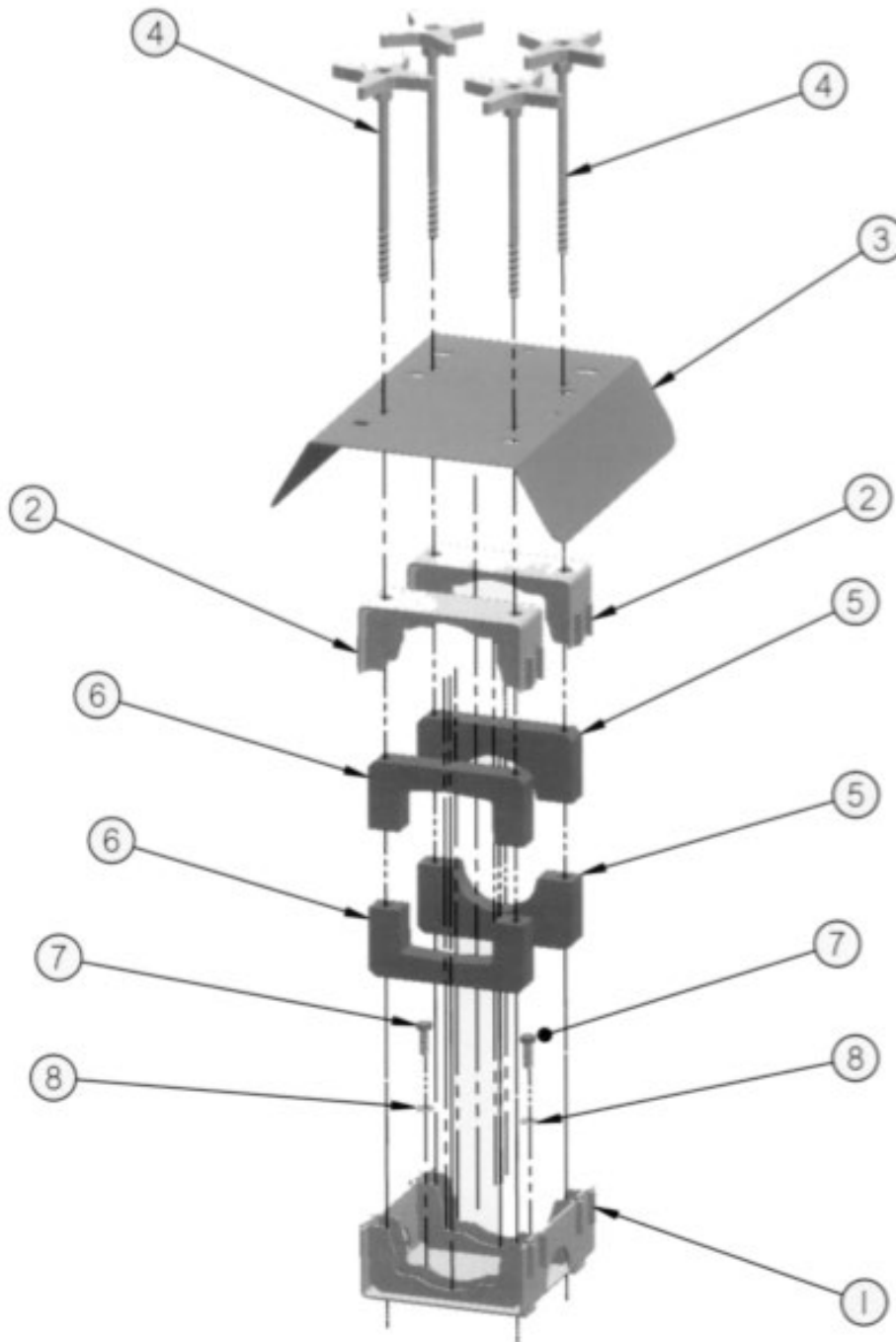
Replacement Parts Diagram Breaker Mount Assembly Makita® HM1317CB



*Replacement Parts Diagram
 Breaker Mount Assembly
 Makita® HM1317CB*

Reference Number	Part Number	Description	Quantity
1	CTS12-1100	Weldment, Mount, Base	1
2	CTS12-1101	Weldment, Clamp, Cap	2
3	CTS12-0040	Cover, Hammer	1
4	CTS12-0070	Screw, Clamp, 7.08 L	4
5	CTS12-0490	Block, Clamp, Elatomeric HMI317CB, Makita®	4
6	15060800	Screw, Cap, 3/8-16 UNC x 1", Plated	4
7	16060000	Washer, Lock, 3/8", Plated	4

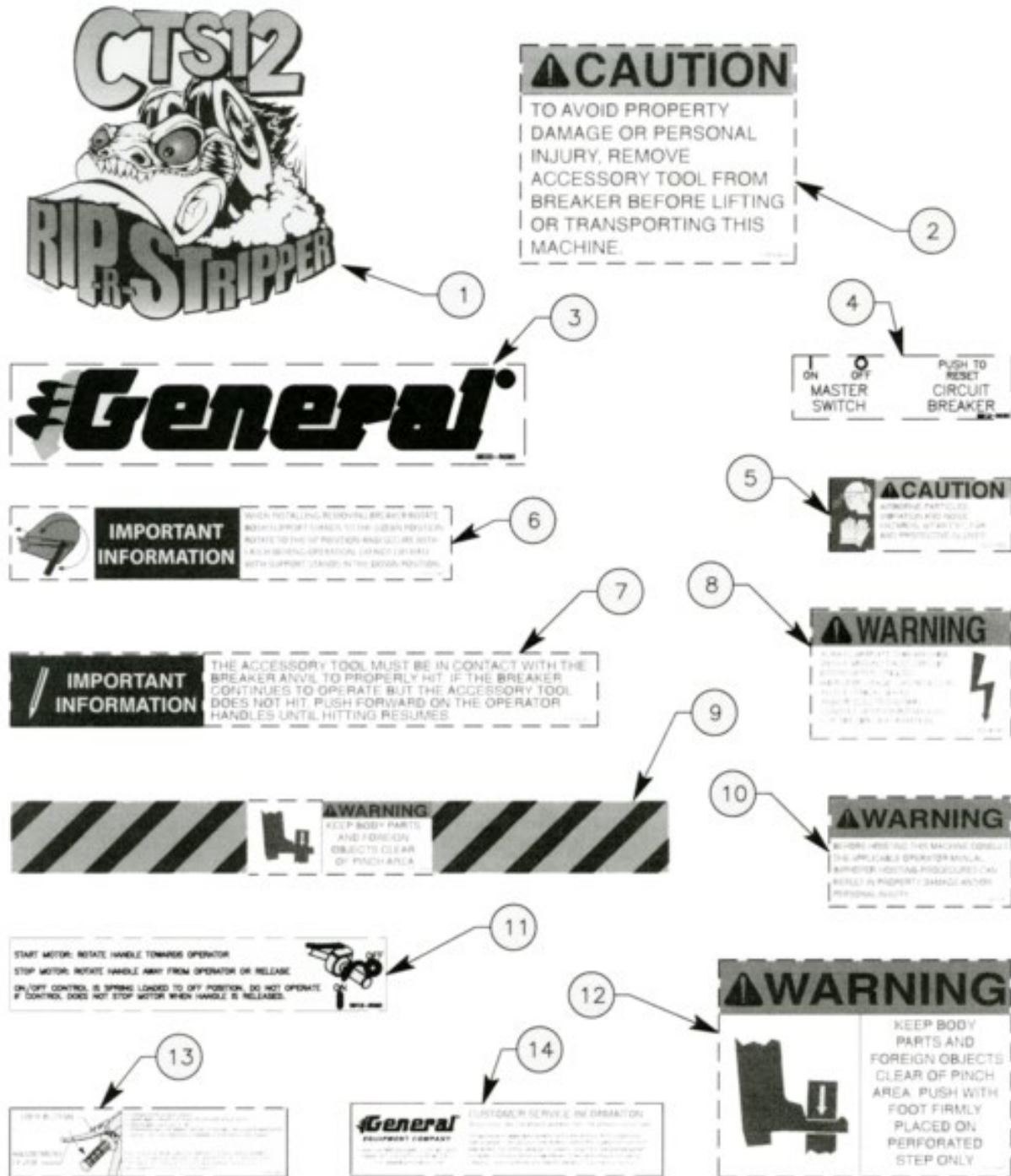
Replacement Parts Diagram Breaker Mount Assembly Makita® HM1500B



Replacement Parts Diagram
Breaker Mount Assembly
Makita® HM1500B

Reference Number	Part Number	Description	Quantity
1	CTS12-1000	Weldment, Mount, Base	1
2	CTS12-1001	Weldment, Clamp, Cap	2
3	CTS12-0040	Cover, Hammer	1
4	CTS12-0075	Screw, Clamp, 7.62 L	4
5	CTS12-0310	Block, Clamp, Elastomeric HM1500B, Makita®	2
6	CTS12-0300	Block, Clamp, Elastomeric HM1500B, Makita®	2
7	15061000	Screw, Cap, 3/8-16 UNC x 1-1/4", Plated	2
8	16060000	Washer, Lock, 3/8", Plated	2

Replacement Parts Diagram Decals



Replacement Parts Diagram

Decals

Reference Number	Part Number	Description	Quantity
1	CTS-5050	Decal, RIP-R-STRIPPER	2
2	CTS12-5010	Decal, Caution, Transport	1
3	GECD-5020	Decal, General	1
4	SG12-5030	Decal, Switch	1
5	FCS5-5020	Decal, Caution, Read	1
6	CTS12-5060	Decal, Kickstand	2
7	CTS12-5070	Decal, Operation	1
8	FCS16-5030	Decal, Warning, Electrical Shock	1
9	CTS12-5040	Decal, Warning, Feet Clear	2
10	CS8-5050	Decal, Warning, Hoisting	2
11	SG12-5020	Decal, Starting	1
12	CTS12-5030	Decal, Warning, Pinch, Point	1
13	CTS12-5020	Decal, Lever	1
14	SG24-5072	Decal, Assistance	1

