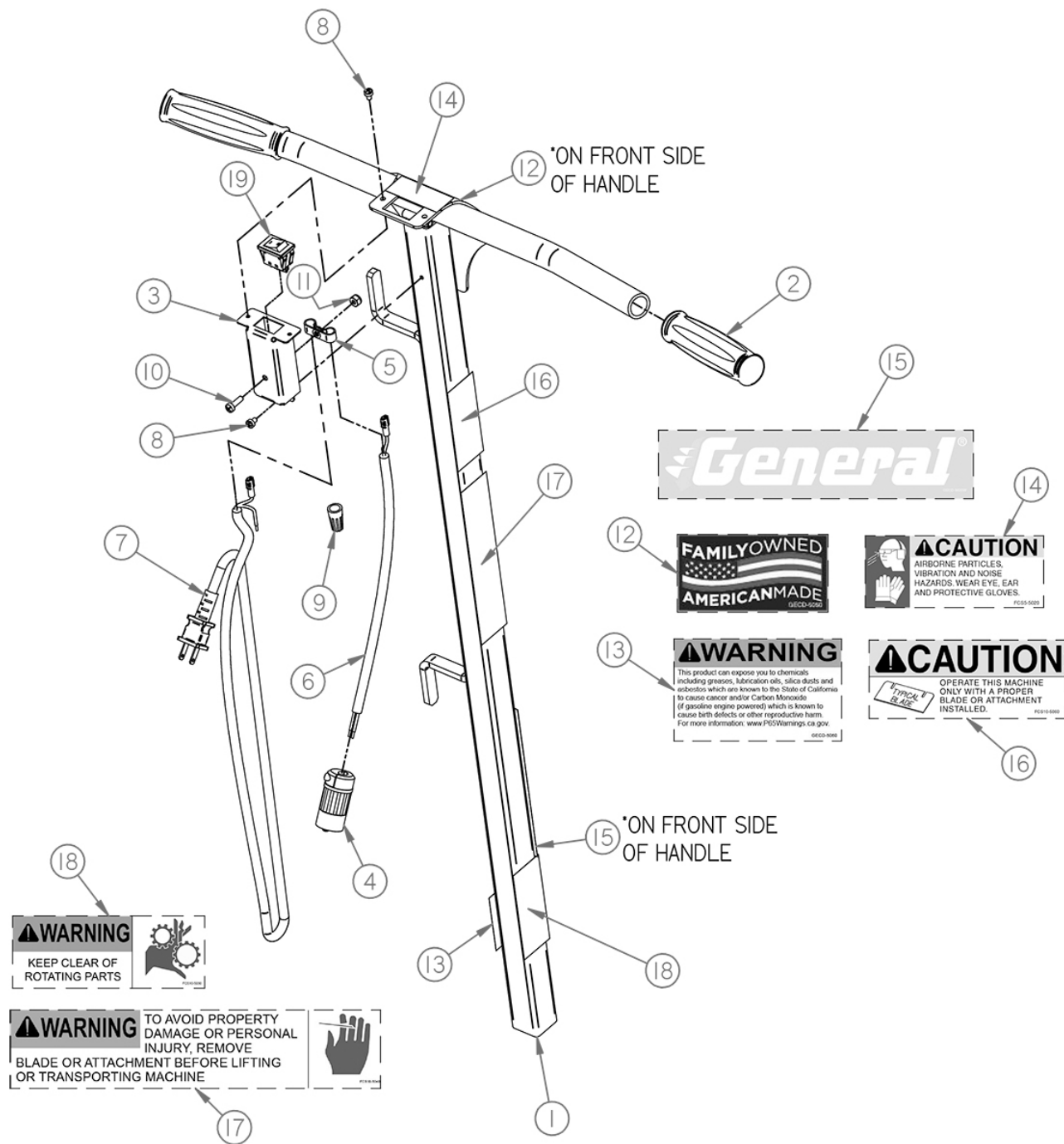


Replacement Parts Diagram
FCS10GEN2 Floor Covering Scraper
115VAC, 60HZ Operation



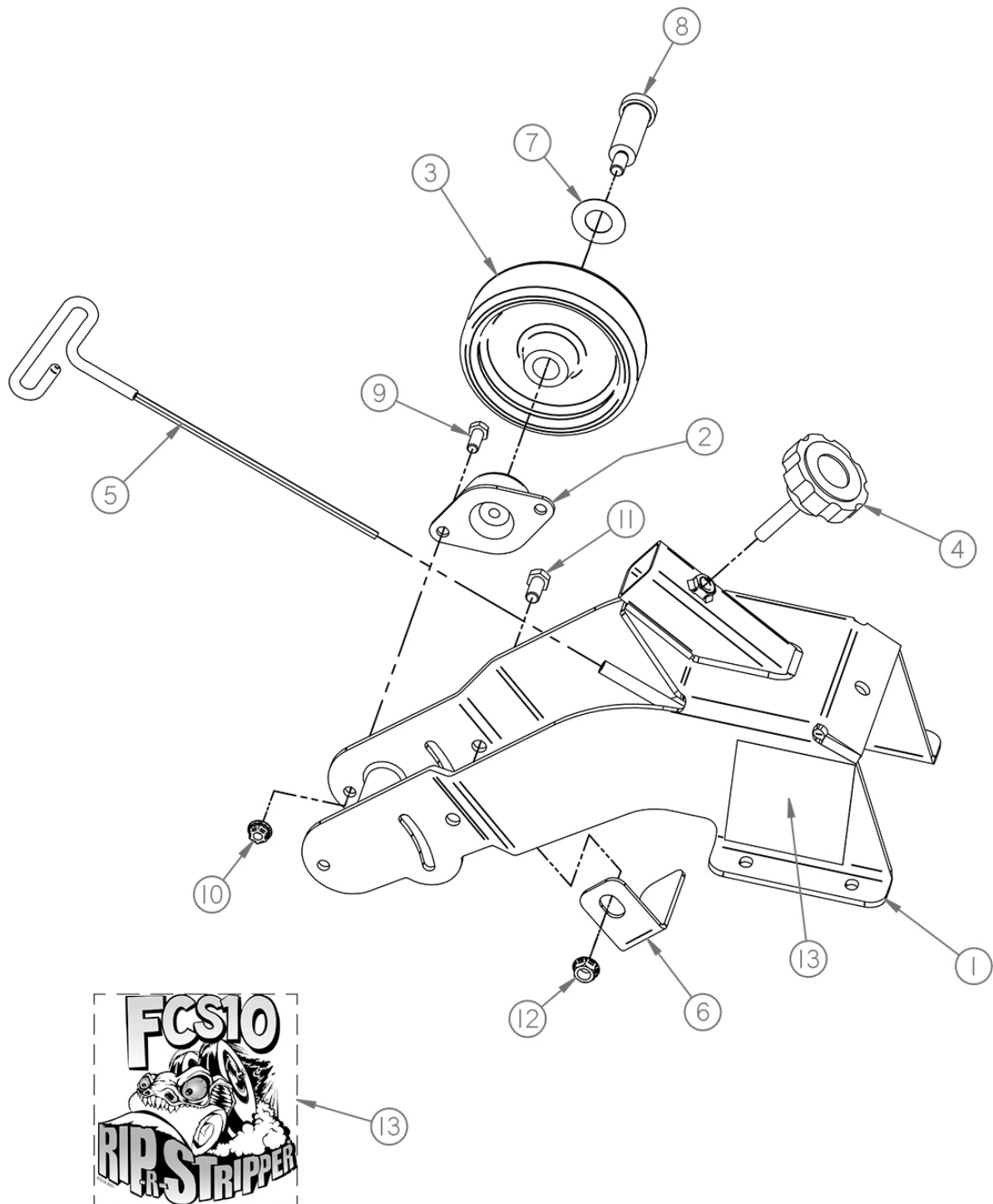
Replacement Parts Diagram Operator Handle Assembly FCS10GEN2 Floor Covering Scraper [Beginning with Serial Number 179211]



*Replacement Parts Diagram
Operator Handle Assembly
FCS10GEN2 Floor Covering Scraper
[Beginning with Serial Number 179211]*

Reference Number	Part Number	Description	Quantity
1	SG7-0020	Weldment, Handle	1
2	FCS16-0290	Grip, Handle	2
3	SG7-0050	Housing, Switch	1
4	FCS10-0160	Recepticle, Cord, Female	1
5	FCS10-0170	Clamp, Wire	2
6	FCS10-0240	Cable, Switch To Plug	1
7	FCS10-0230	Cable, Plug To Switch	1
8	79020200	PHMS, Self Tap, #8-32 X 1/4	3
9	WIRENUTY	Nut, Wire	1
10	37030500	PHMS, #10-24 X 5/8, ZY	1
11	53030000	Nut, Nylok, #10-24, ZY	1
12	GECD-5050	Decal, Family Owned, American	1
13	GECD-5060	Decal, Warning, Prop 65	1
14	FCS5-5020	Decal, Caution	1
15	GECD-5020W	Decal, General, 1.38 X 7.00	1
16	FCS10-5060	Decal, Use Blade	1
17	FCS10-5040	Decal, Warning, Blade Removal	1
18	FCS10-5030	Decal, Warning, Clear Rotating	1
19	SG7-0060	Power, Switch	1

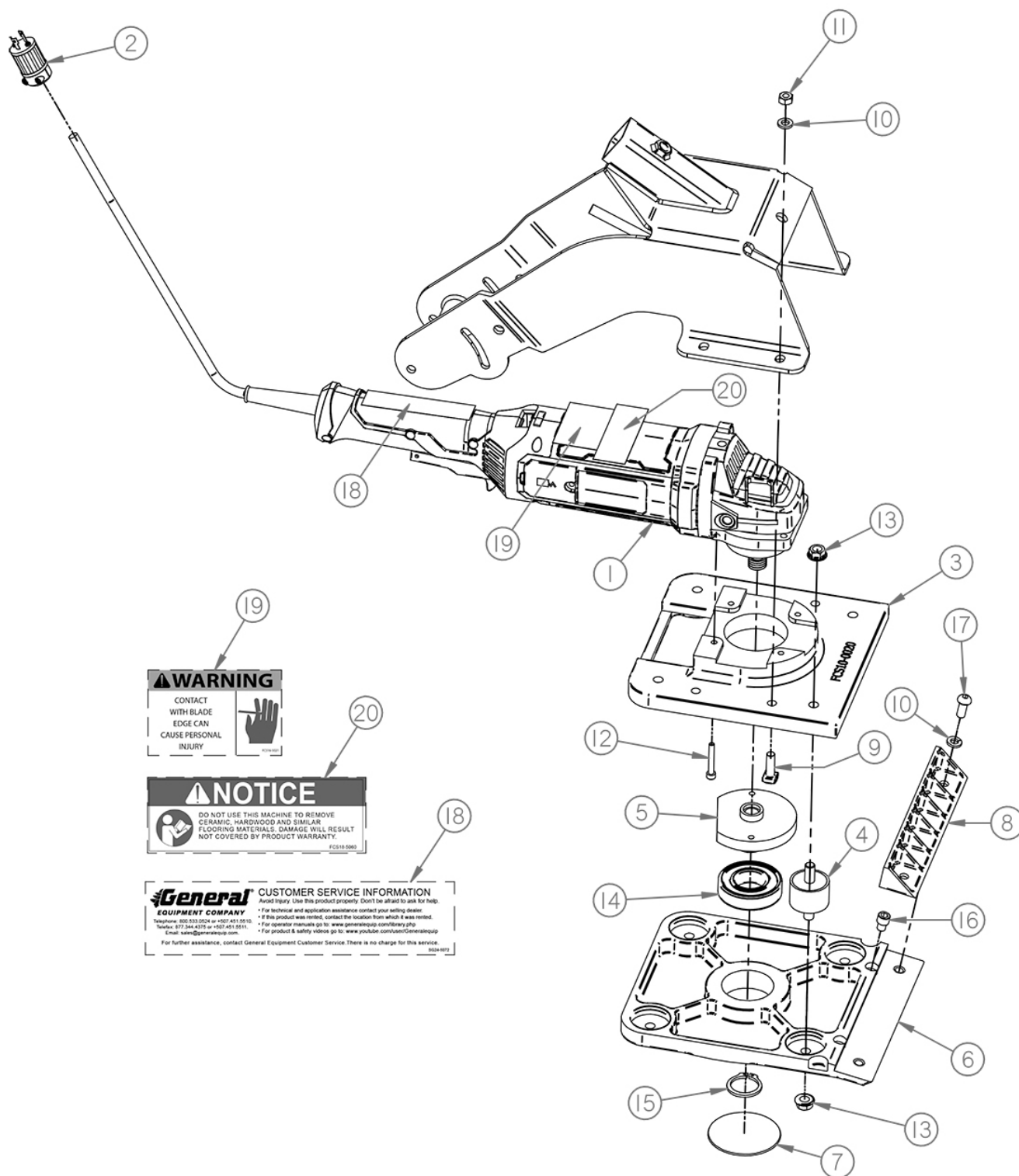
*Replacement Parts Diagram
Main Frame Assembly
FCS10GEN2 Floor Covering Scraper
[Beginning with Serial Number 179211]*



*Replacement Parts Diagram
Main Frame Assembly
FCS10GEN2 Floor Covering Scraper
[Beginning with Serial Number 179211]*

Reference Number	Part Number	Description	Quantity
1	FCS10-0051	Frame, Main	1
2	FCS10-0110	Mount, Rubber, Axle	2
3	FCS10-0190	Wheel, 5D	2
4	FCS16-0150	Knob, Adjustment	1
5	FCS16-0260	Wrench, Hex, T-Handle	1
6	SG12-0371	Scraper, Wheel	2
7	200682	Washer, Plastic	2
8	FCS10-0210	Bolt, Shoulder, Special	2
9	15050600	HHCS, 5/16-18 X 3/4, ZY	4
10	39050000	Nut, Whizlock, 5/16-18, ZY	4
11	15060600	HHCS, 3/8-16 X 3/4, ZY	2
12	86060000	Nut, Hex, Flange, 3/8-16, ZY	2
13	FCS10-5051	Decal, Rip-R-Stripper	2

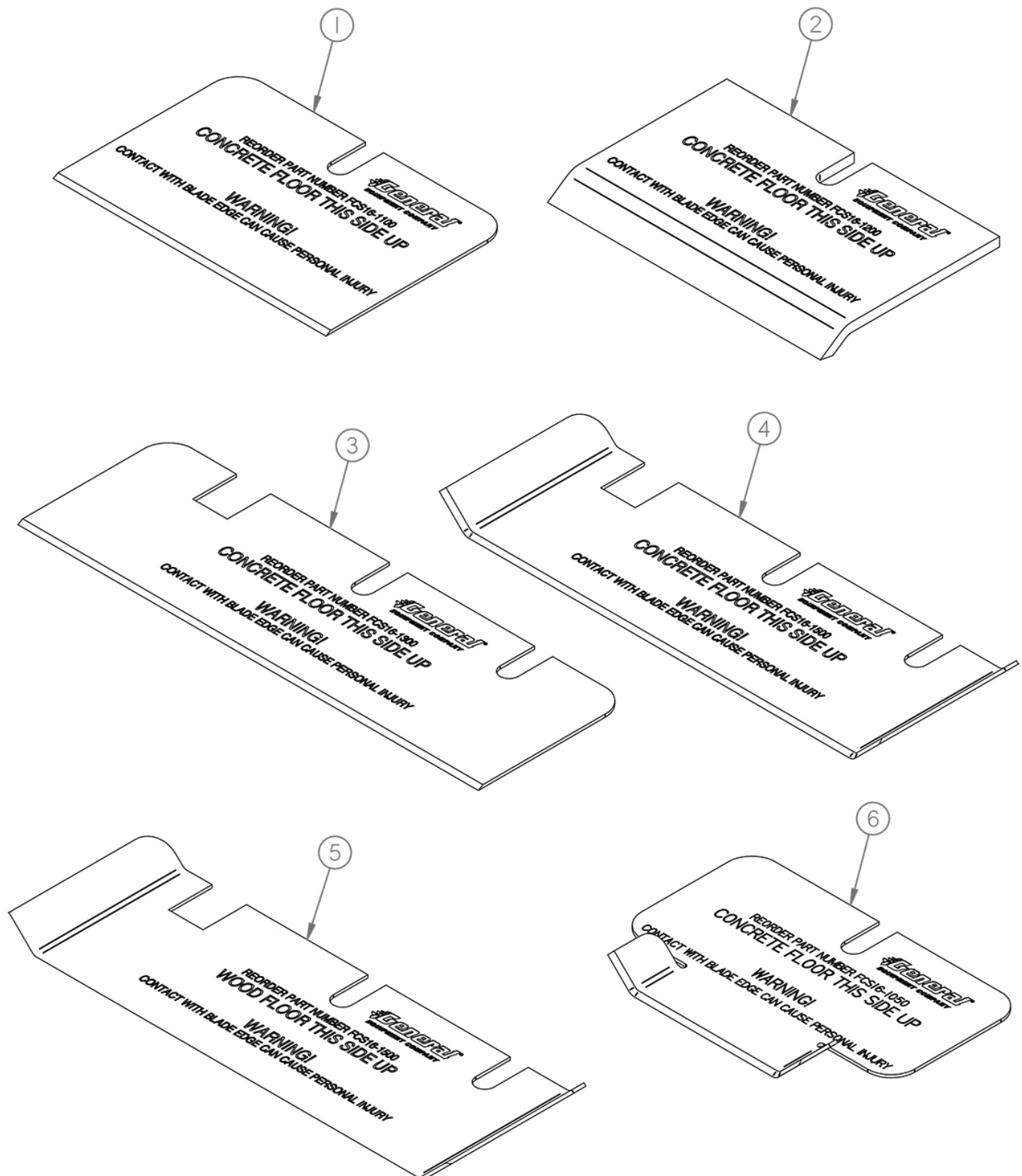
Replacement Parts Diagram Orbital Plate Assembly FCS10GEN2 Floor Covering Scraper [Beginning with Serial Number 179211]



*Replacement Parts Diagram
Orbital Plate Assembly
FCS10GEN2 Floor Covering Scraper
[Beginning with Serial Number 179211]*

Reference Number	Part Number	Description	Quantity
1	FCS10-0201	Grinder, Metabo	1
2	FCS10-0150	Plug, Cord, Male	1
3	FCS10-0020	Plate, Top	1
4	FCS16-0311-010	Mount, Rubber	4
5	FCS10-0071	Flywheel	1
6	FCS10-0010	Assembly, Plate, Bottom	1
7	FCS10-0140	Plug, Welch	1
8	FCS10-0060	Clamp, Blade	1
9	FCS10-0250	Bolt, Head, Sq, 5/16-18 X 1 ZY	4
10	16050000	Washer, Lock, 5/16, ZY	6
11	18050000	Nut, Hex, 5/16-18, ZY	4
12	60053510	SHCS, M5-0.8 X 35, PF	4
13	86060000	Nut, Hex, Flange, 3/8-16, ZY	8
14	6206-2RS	Bearing, Ball	1
15	5160-118	Ring, Snap	1
16	60050300	SHCS, 5/16-18 X 3/8, ZY	2
17	55050600	BHSCS, 5/16-18 X 3/4, ZY	2
18	SG24-5072	Decal, Assistance	1
19	FCS16-5021	Decal, Warning, Blade	1
20	FCS18-5060	Decal, Damage, Machine	1

Replacement Cutting Blades FCS10GEN2 Floor Covering Scraper



Replacement Cutting Blades FCS10GEN2 Floor Covering Scraper

Reference Number	Part Number	Description	Quantity
1	FCS16-1100PAK3	Blade, Straight, 6L General Purpose Removal Projects On Both CONCRETE And WOOD Surfaces	1
2	FCS16-1200PAK2	Blade, Removal, Mastic, 6L Mastic And Thin Film Coverings Removal On CONCRETE Surfaces ONLY	1
3	FCS16-1300PAK3	Blade, Straight, 10L General Purpose Removal Projects On Both CONCRETE And WOOD Surfaces	1
4	FCS16-1500PAK2	Blade, Scoring, Cement, 8L Glued Carpets And Sheet Type Linoleum, Rubber, PVC, Etc. Products On CONCRETE Surfaces ONLY	1
5	FCS16-1600PAK2	Blade, Scoring, Wood, 8L Glued Carpets And Sheet Type Linoleum, Rubber, PVC, Etc. Products On WOOD Surfaces ONLY	1
6	FCS16-1050PAK2	Blade, Scoring, Cement, 3L Glued Carpets And Sheet Type Linoleum, Rubber, PVC, Etc. Products On CONCRETE Surfaces ONLY	1