



SERVICE MANUAL

Service, Repair & Replacement Parts Information

RIP-R-STRIPPER® Floor Covering Stripper

Model: FCS16GEN3

Form: PGSM19091901EU, Version 1.0, Original Instructions

- Do not discard this manual.
- Keep manual readily available for reference during operation or when servicing product.
- Before operation, read and comprehend operator manual content.
- **Customer Service:** 001 507 451 5510
- **Customer Service Telefax:** 001 507 451 5511
Note: There is no charge for Customer Service.
- **Internet Address:** <http://www.generalequip.com>
- **Email:** general@generalequip.com
- **Mailing Address:**
General Equipment Company, 620 Alexander Dr. S.W., P.O. Box 334, Owatonna, MN 55060, USA

EUROPEAN REPRESENTATIVE

- **Customer Service:** (+31) 5 23 63 82 86
- **Internet Address:** <http://www.eurogate-international.com>
- **Email:** info@eurogate-international.com
- **Mailing Address:** Eurogate International, Galilieistraat 6, 7701 SK Dedemsvaart, The Netherlands

Product covered by this manual complies with mandatory requirements of 2006/42/EC.

Copyright 2021, General Equipment Company, All rights reserved.



TABLE OF CONTENTS

1	INTRODUCTION	1
2	SAFETY SYMBOLS.....	1
3	SAFETY INSTRUCTIONS	1
4	SERVICE/REPAIR INSTRUCTIONS	1
5	END OF LIFECYCLE	2
6	DECLARATION OF CONFORMITY	2
7	REPLACEMENT PARTS	4

1 INTRODUCTION

The RIP-R-STRIPPER is intended for use in removing a variety of floor covering materials in a non-explosive atmosphere. This manual is provided to assist in the service of specific, longer term service items and replacement of parts when repairs are required. **Contents of this manual must be used in conjunction with the latest version Operator's Manual GOM19091901EU for products sold within European Union countries and GOM19091901US for all other destinations.**

You have access to a team of dedicated, knowledgeable, support personnel that ready to provide field support assistance. Our personnel readily answer your questions or concerns regarding proper applications, service requirements and warranty related problems.

Please feel free to contact our European Representative or Customer Service Department during normal business hours using the contact information located on the front cover of this manual. There is no charge for this service.

Sincerely,
The General Equipment Team

2 SAFETY SYMBOLS

The following safety alert symbols identify important safety messages in this manual. When you see these symbols, be alert to the possibility of personal injury and carefully read the message that follows.

SAFETY SYMBOLS & MEANINGS

Symbol	Meaning	Symbol	Meaning
	Action Required		No Trash Containers
	Read Manual		General Warning
	Wear Ear Protection		Warning, Flammable Material
	Wear Eye Protection		Warning, Explosive Material
	Wear Protective Gloves		Warning, Toxic Material
	Wear Safety Shoes		Warning, Electricity
	Wear Breathing Protection		Warning, Body Entrapment
	Disconnect From Power		Warning, Sharp Element
	No Open Flame		Warning, Floor Level Obstacle
	No Smoking		Warning, Drop Off
	No Active Mobile Phone		Warning, Slippery Surface

	No Food Or Drink		
--	------------------	--	--

3 SAFETY INSTRUCTIONS



- These safety instructions provide guidelines to promote safety and efficiency in servicing/repairing the RIP-R-STRIPPER.
- No warranty, guarantee or representation is made by manufacturer as to absolute correctness or sufficiency of any information or statement.
- Safety instructions are intended to deal with common practices and conditions encountered in servicing/repairing of RIP-R-STRIPPER and are not intended to be all inclusive.
- Not following instructions in this manual can result in property damage, personal injury and/or death.

BEFORE SERVICING/MAKING REPAIRS



1. BEFORE servicing and/or repairing the RIP-R-STRIPPER, read this manual and appropriate Operator's Manual to gain familiarization with correct procedures. DO NOT service/repair RIP-R-STRIPPER unless designated service/repair technician has received adequate, professional instruction regarding proper procedures.
2. Visually inspect RIP-R-STRIPPER per Operator Manual MAINTENANCE INSTRUCTIONS STEPS 5 through 10.
3. Determine RIP-R-STRIPPER is in original, factory configuration and has not been modified in any manner. If questions arise about possible modifications, contact the European Representative or Customer Service Department BEFORE utilization. There is no charge for this service.

NOTE: Specifications and design are subject to change without notice or obligation. All specifications are general in nature and are not intended for specific application purposes. General Equipment Company reserves the right to make changes in design, engineering or specifications and to add improvements or discontinue manufacture at any time without notice or obligation. General Equipment Company and its agents accept no responsibility for variations which may be evident in actual products, specifications, pictures and descriptions contained in this publication.

4 SERVICE/REPAIR INSTRUCTIONS



The following information is intended for specific service/repair situations for the RIP-R-STRIPPER. Information is for reference only and is not intended to be all inclusive.

1. Use only factory approved replacement parts/accessories only for servicing/repair.
2. All service/repairs not described in this manual must be done by a dedicated service center following a specific service/repair manual.
3. STOP RIP-R-STRIPPER BEFORE performing service and repair per STOPPING RIP-R-STRIPPER in OPERATING INSTRUCTIONS section of Operator's Manual.
4. Remove accessory blade per INSTALLING & REMOVING ACCESSORY BLADES in MACHINE SET-UP section of Operator Manual and inspect for sharpness and cracking. Sharpen blade per ACCESSORY BLADE SHARPENING in SERVICE/REPAIR INSTRUCTIONS section of this manual. Replace blade if severely worn or damaged.

IMPORTANT: Use safety type solvent. DO NOT use thinner, benzene, or other volatile solvents that will attack rubber/plastic components when cleaning RIP-R-STRIPPER. Provide adequate ventilation. Dispose of rags/solvents per international and local regulations.

NOTE: Properly dispose of all accumulated floor covering materials according to international and local environmental standards.

LUBRICATION

Grease intervals will vary dependent on machine use and operating environments. In general, lubrication should be performed after every 8 hours of continuous use.

Tools Required:

1 each, standard grease gun

Lubricants Required:

1 each, (for standard grease gun) fill with one of the following:

- a) ESSO Beacon 325
- b) Shell Alvana #2
- c) Chevron SRI or equivalent

1 each, container dry film lubricant

- 1. Lubricate caster wheel bearings using dry film lubricant. Lubricant dries immediately.

IMPORTANT: DO NOT lubricate caster wheel bearings with other than dry film type lubricants or over lubricate to prevent foreign material attraction and reduced bearing service life. Use sparingly.

- 2. Zerk type fittings are provided at two locations. Using grease gun, lubricate pivot plate bushings.
 - a) Lubricate Back-Saver™ Blade Control system jackscrew to minimize blade control friction during operation. FIGURE 1

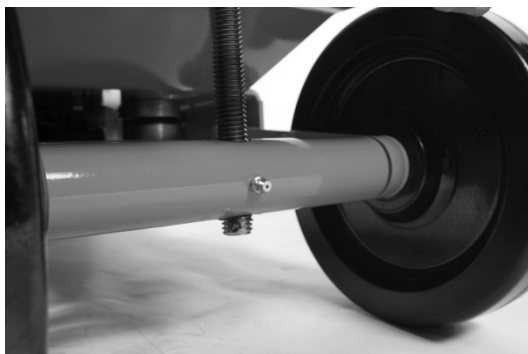


FIGURE 1

- b) Lubricate exciter plate shielded bearing and bearing housing casting. Zerk fitting lubricates bearing balls and self-aligning feature of bearing. FIGURE 2



FIGURE 2

IMPORTANT: DO NOT over lubricate to prevent foreign material accumulations and accelerated wear/reduced bearing service life. Grease accumulation on bearing/bearing housing indicates excessive lubrication.

NOTE: Sleeve bearings for operator handle are self-lubricating plus ball bearings are shielded or sealed. Both will not require lubrication during normal service life.

ACCESSORY BLADE SHARPENING

- 1. Blades can be sharpened using a file designed for use on metal materials. This method will not duplicate original blade sharpening process, but can significantly increase overall productivity rates versus use of a dull blade.
 - a) Remove blade from RIP-R-STRIPPER per INSTALLING & REMOVING ACCESSORY BLADES in MACHINE SET-UP section of Operator Manual.
 - b) Properly secure blade in suitable vice.
 - c) Use file to sharpen blade edge using similar method to sharpening rotary lawnmower blade. FIGURE 3



FIGURE 3

ELECTRIC MOTOR SERVICE

The motor is designed for long service life with minimal maintenance. The motor is equipped with higher capacity ball bearings and seals intended for dust-filled atmospheres that should not require lubrication for many years.

- 1. If bearing lubrication or seal replacement is necessary, contact local motor manufacturer representative for specific information.

5 END OF LIFECYCLE



If the machine comes to the end of its lifecycle, destruction of the machine must be conducted according to international and local environmental regulations.

6 DECLARATION OF CONFORMITY

We, General Equipment Company, 620 Alexander Drive SW, P.O. Box 334, Owatonna, MN 55060, USA declare under our sole responsibility that the portable floor covering stripper product: FCS16

To which this declaration relates is in conformity with the following standards or standardization documents:

- EN-ISO 12100:2010

According to the provisions of the European directive:

- 2006/42/EC

Manufactured at: Owatonna, Minnesota 55060, USA
Beginning with serial number: 172811

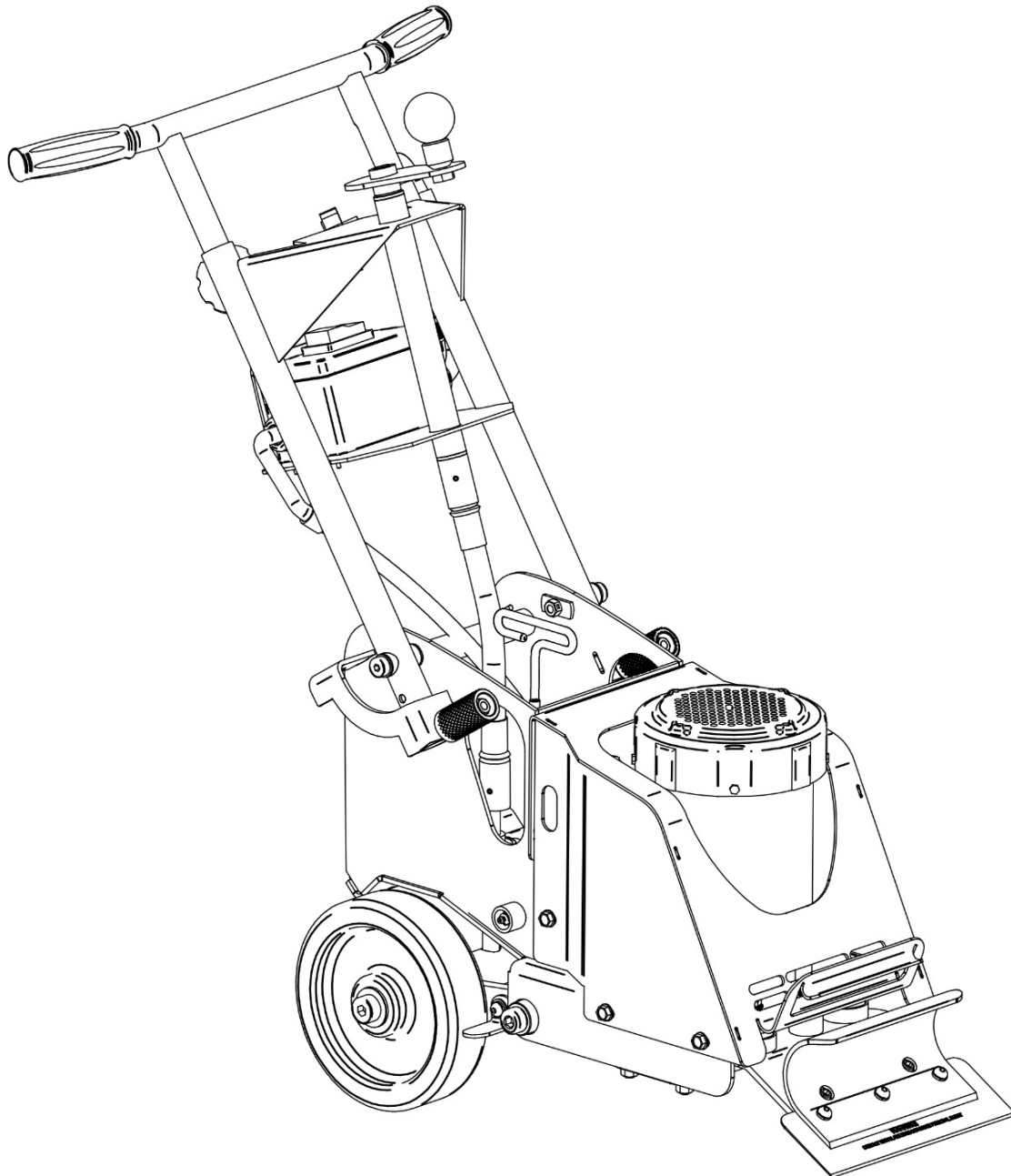
Signature: Dennis Von Ruden

Position: President

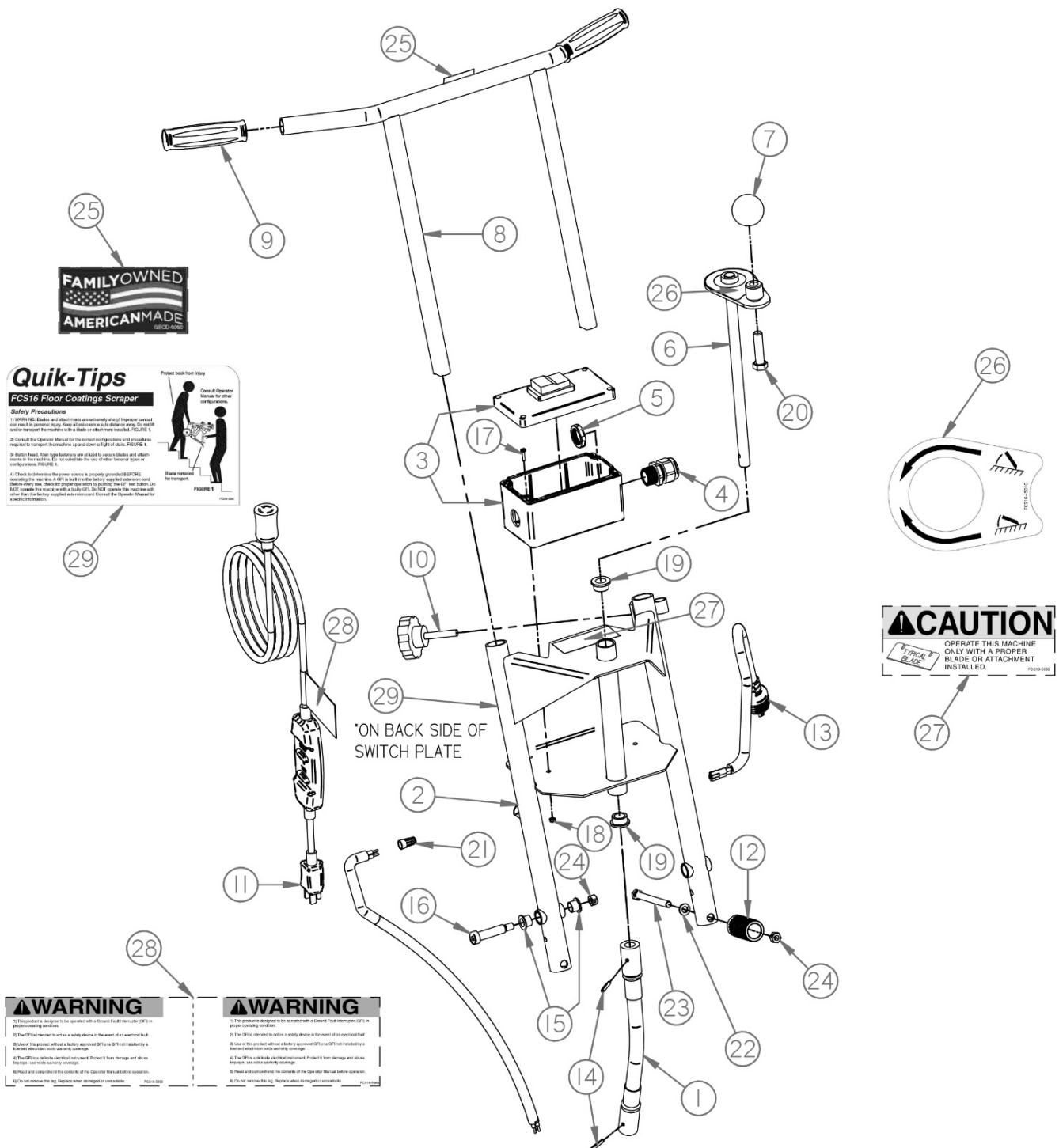
Date: September 19, 2019

PAGE INTENTIONALLY LEFT BLANK

Replacement Parts Diagram
FCS16 Generation III Floor Covering Scraper
115VAC, 60HZ Operation



Replacement Parts Diagram Handle Assembly FCS16 Generation III Floor Covering Scraper [Beginning with Serial Number 172811]



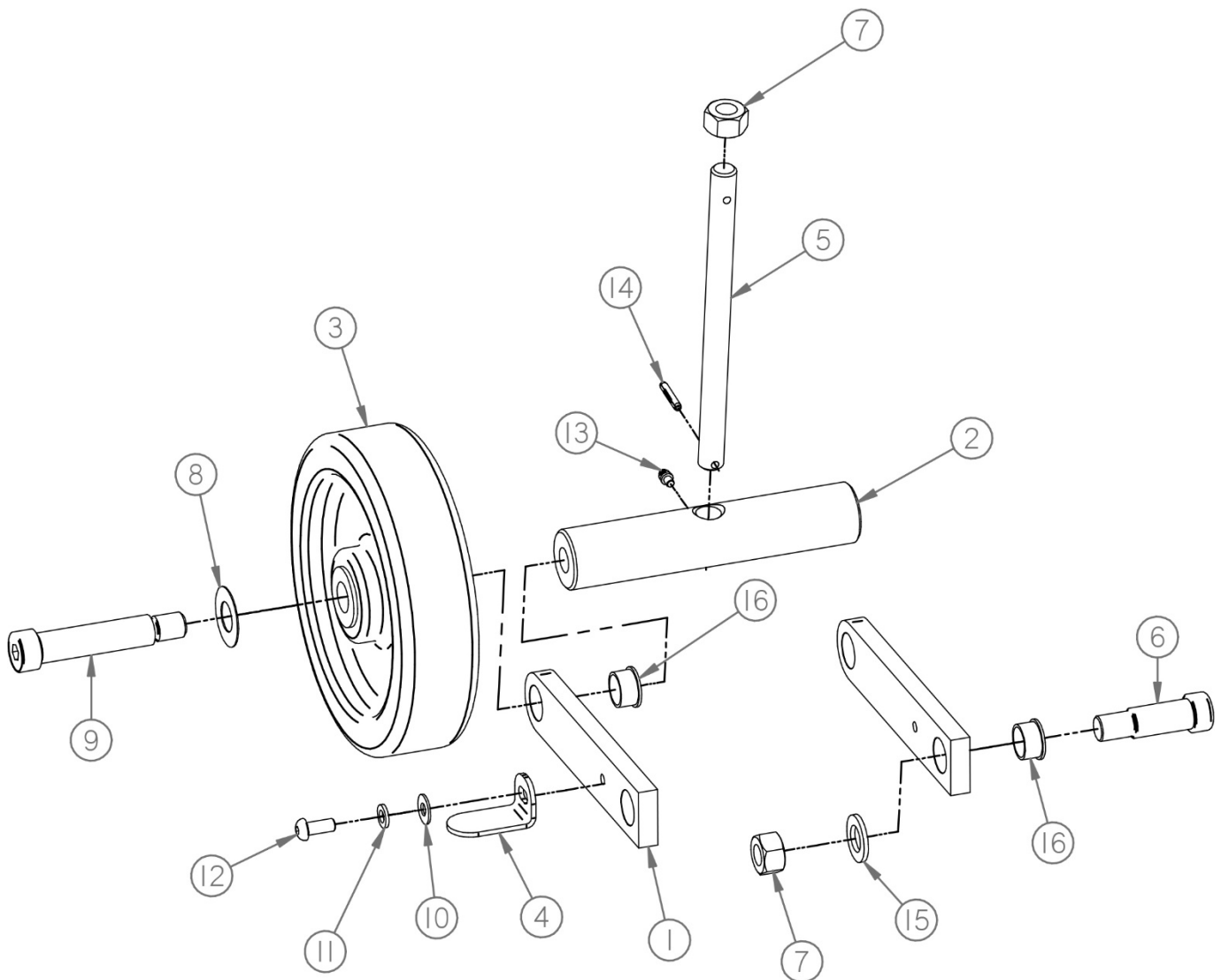
*Replacement Parts Diagram
Handle Assembly
FCS16 Generation III Floor Covering Scraper
[Beginning with Serial Number 172811]*

Reference Number	Part Number	Description	Quantity
1	FCS16-0120	Assembly, Hose	1
2	FCS16-0183	Handle, Lower	1
3	FCS16-0463	Switch, Motor	1
4	FCS16-0420-010	Grip, Cord	2
5	FCS16-0420-020	Nut, Grip, Cord	2
6	FCS16-0141	Weldment, Crank	1
7	SP8-0120	Knob, Handle	1
8	FCS16-0161	Handle, Top	1
9	FCS16-0290	Grip, Handle	2
10	FCS16-0150	Knob, Adjustment	2
11	FCS16-1000A	Cord, Extension, GFCI, 444L	1
12	FCS16-0520	Knob, Handle, Lower	2
13	FCS16-0042	Cable, Plug To Switch, Molded	1
14	20030900	Pin, Roll, 3/16 X 1-1/8	2
15	FCS16-0340	Bearing, Oilite	4
16	62081400	Bolt, Shoulder, 1/2 X 1-3/4	2
17	37010500	PHMS, #6-32 X 5/8, Z	4
18	53010000	Nut, Nylok, #6-32, ZY	4
19	FCS16-0400	Bearing, Oilite	2
20	15081600	HHCS, 1/2-13 X 2, ZY	1
21	WIRENUTY	Nut, Wire	1
22	16060000	Washer, Lock, 3/8, ZY	2
23	15063210	HHCS, FI, 3/8-16 X 4, ZY	2
24	52060000	Nut, Lock, 2-Way, 3/8-16, ZY	4
25	GECD-5050	Decal, Family Owned, American	1
26	FCS16-5010	Decal, Adjustment, Angle	1
27	FCS10-5060	Decal, Use Blade	1
28	FCS16-5080	Decal, Cord, GFCI	1
29	FCS16-0281	Decal, Quik-Tips	1

*Replacement Parts Diagram
Main Frame Assembly
FCS16 Generation III Floor Covering Scraper
[Beginning with Serial Number 172811]*

Reference Number	Part Number	Description	Quantity
1	FCS16-0013	Frame, Main	1
2	FCS16-0031	Motor, Electric, Shaft, .87D	1
3	FCS16-0440	Stop, Bumper	1
4	SP8-0590	Fitting, Grease, Straight	1
5	FCS16-0510	Connector, Grease, Y	1
6	FCS16-0172	Cover, Motor	1
7	SP8-0430CP	Bearing, Flange	1
8	FCS16-0260	Wrench, Hex, T-Handle	1
9	16060000	Washer, Lock, 3/8, ZY	4
10	15060800	HHCS, 3/8-16 X 1, ZY	4
11	39050000	Nut, Whizlock, 5/16-18, ZY	1
12	48050400	Screw, Drive, 5/16-18 X 1/2, Z	6
13	87040800	Bolt, CRG, 1/4-20 X 1, ZY	2
14	16040000	Washer, Lock, 1/4, ZY	2
15	18040000	Nut, Hex, 1/4-20, ZY	2
16	17040000	Washer, Flat, 1/4, ZY	1
17	16050000	Washer, Lock, 5/16, ZY	1
18	15050700	HHCS, 5/16-18 X 7/8, ZY	1
19	63031000	Key, Square, 3/16 X 1-5/16	1
20	GECD-5020	Decal, General, 1.38 X 7.00	1
21	SP8-5061	Decal, Procedures, Grease	1
22	FCS16-5040	Decal, Warning, Blade Removal	1
23	SP8-5031	Decal, Warning, Clear Rotating	1
24	CS8-5051	Decal, Warning, Hoisting	1
25	SG24-5072	Decal, Assistance	1
26	SP8-5051	Decal, Warning, Guards	1
27	SP8-5041	Decal, Caution, Eye/Ear	1
28	FCS16-5051	Decal, Rip-R-Stripper	2
29	GECD-5060	Decal, Warning, Prop 65	1
30	FCS16-5021	Decal, Warning, Blade	1
31	FCS16-5031	Decal, Warning, Shock	1

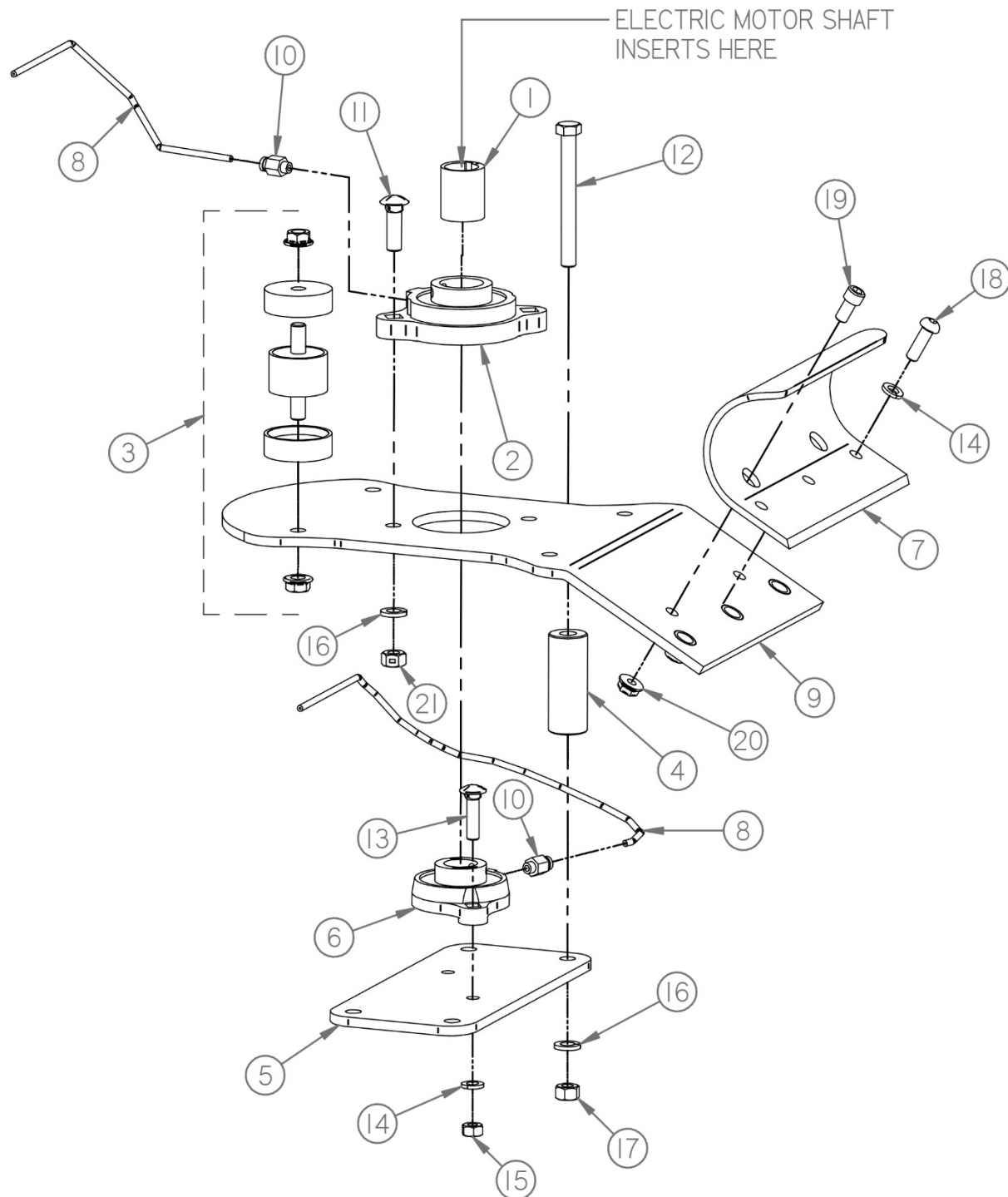
*Replacement Parts Diagram
Axle Assembly
FCS16 Generation III Floor Covering Scraper
[Beginning with Serial Number 172811]*



*Replacement Parts Diagram
Axle Assembly
FCS16 Generation III Floor Covering Scraper
[Beginning with Serial Number 172811]*

Reference Number	Part Number	Description	Quantity
1	FCS16-0130	Weldment, Arm, Axle	1
2	FCS16-0060	Axle	1
3	FCS16-0240	Wheel, 8D	2
4	FCS16-0091	Scraper, Wheel	2
5	FCS16-0052	Screw, Jack, ZY	1
6	62121200	Bolt, Shoulder, 3/4 X 1-1/2	2
7	18100000	Nut, Hex, 5/8-11, ZY	3
8	200682	Washer, Plastic	2
9	62122400	Bolt, Shoulder, 3/4 X 3	2
10	17040000	Washer, Flat, 1/4, ZY	2
11	16050000	Washer, Lock, 5/16, ZY	2
12	55050600	BHSCS, 5/16-18 X 3/4, ZY	2
13	550-0590	Fitting, Grease	1
14	20030900	Pin, Roll, 3/16 X 1-1/8	1
15	17160010	Washer, Flat, M16, Z	2
16	660-0410	Bearing, Oilite	4

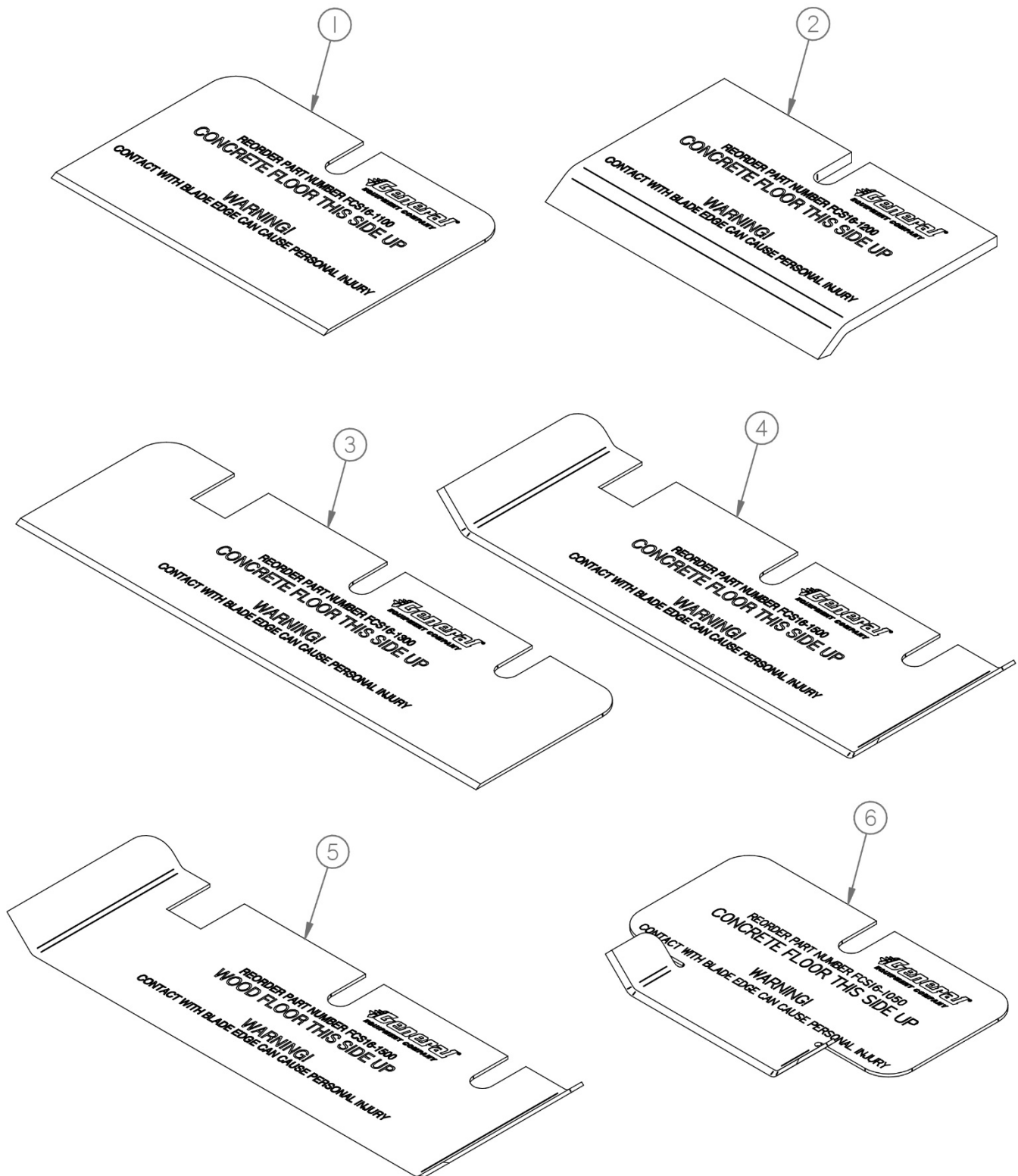
*Replacement Parts Diagram
Orbital Plate Assembly
FCS16 Generation III Floor Covering Scraper
[Beginning with Serial Number 172811]*



*Replacement Parts Diagram
Orbital Plate Assembly
FCS16 Generation III Floor Covering Scraper
[Beginning with Serial Number 172811]*

Reference Number	Part Number	Description	Quantity
1	FCS16-0071	Hub, Offset	1
2	FCS16-0321CP	Bearing, Flange	1
3	FCS16-0312	Assembly, Mount, Rubber	4
4	FCS16-0372	Bar, Standoff	4
5	FCS16-0113	Plate, Bottom	1
6	FCS16-0410	Bearing, Flange	1
7	FCS16-0192	Plate, Clamp	1
8	FCS16-0380	Hose, Grease	2
9	FCS16-0024A	Assembly, Plate, Orbital	1
10	SG12-0130	Connector, Hose	2
11	87061000	Bolt, CRG, 3/8-16 X 1-1/4, ZY	2
12	15062800	HHCS, 3/8-16 X 3-1/2, ZY	4
13	87051000	Bolt, CRG, 5/16-18 X 1-1/4, ZY	2
14	16050000	Washer, Lock, 5/16, ZY	5
15	18050000	Nut, Hex, 5/16-18, ZY	2
16	16060000	Washer, Lock, 3/8, ZY	6
17	18060000	Nut, Hex, 3/8-16, ZY	4
18	55050800	BHSCS, 5/16-18 X 1, ZY	3
19	60050500	SHCS, 5/16-18 X 5/8, ZY	2
20	39050000	Nut, Whizlock, 5/16-18, ZY	2
21	52060000	Nut, Lock, 2-Way, 3/8-16, ZY	2

Replacement Cutting Blades FCS16 Generation III Floor Covering Scraper



Replacement Cutting Blades *FCS16 Generation III Floor Covering Scraper*

Reference Number	Part Number	Description	Quantity
1	FCS16-1100	Blade, Straight, 6L General Purpose Removal Projects On Both CONCRETE And WOOD Surfaces	1
2	FCS16-1200	Blade, Removal, Mastic, 6L Mastic And Thin Film Coverings Removal On CONCRETE Surfaces ONLY	1
3	FCS16-1300	Blade, Straight, 10L General Purpose Removal Projects On Both CONCRETE And WOOD Surfaces	1
4	FCS16-1500	Blade, Scoring, Cement, 8L Glued Carpets And Sheet Type Linoleum, Rubber, PVC, Etc. Products On CONCRETE Surfaces ONLY	1
5	FCS16-1600	Blade, Scoring, Wood, 8L Glued Carpets And Sheet Type Linoleum, Rubber, PVC, Etc. Products On WOOD Surfaces ONLY	1
6	FCS16-1050	Blade, Scoring, Cement, 3L Glued Carpets And Sheet Type Linoleum, Rubber, PVC, Etc. Products On CONCRETE Surfaces ONLY	1