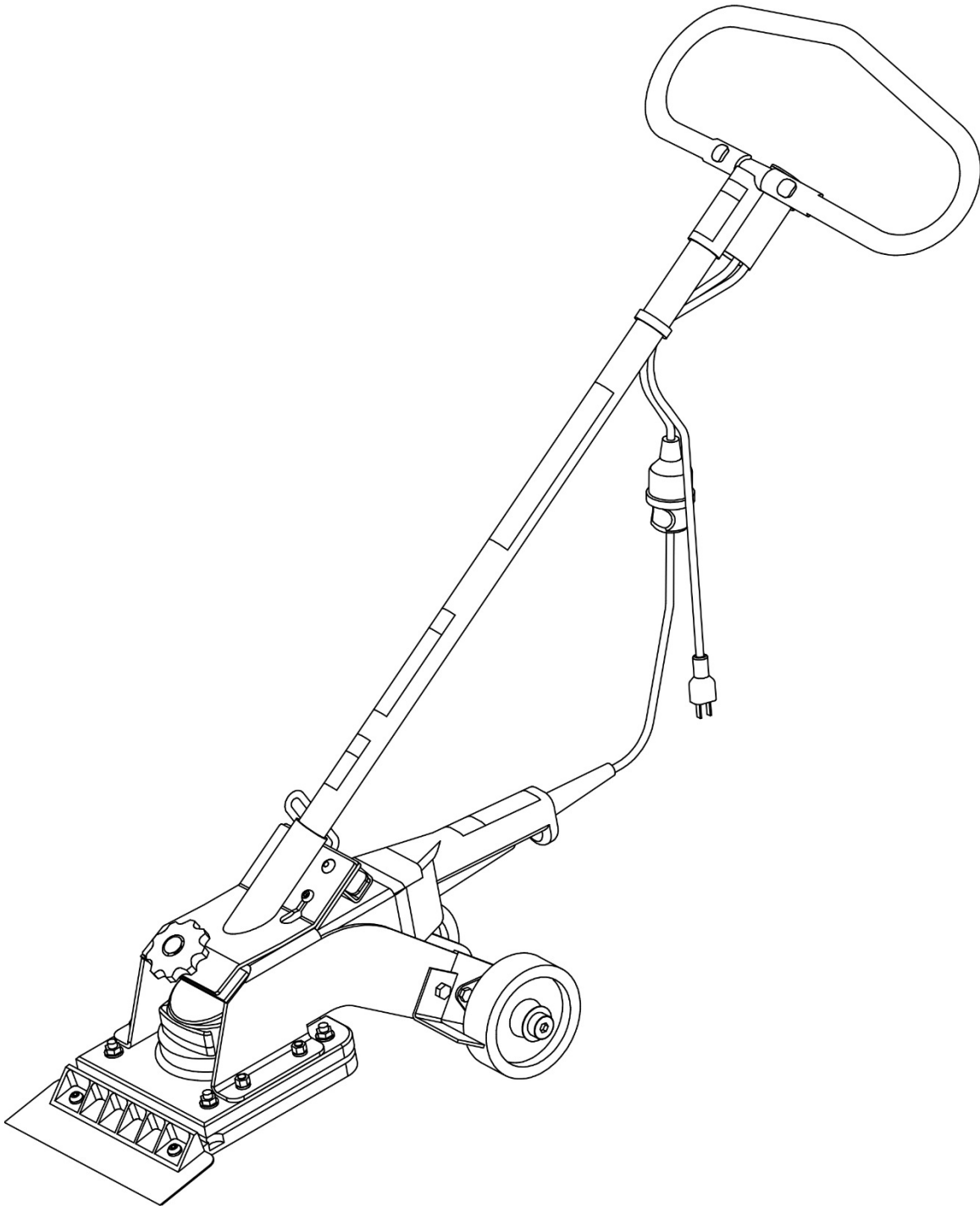
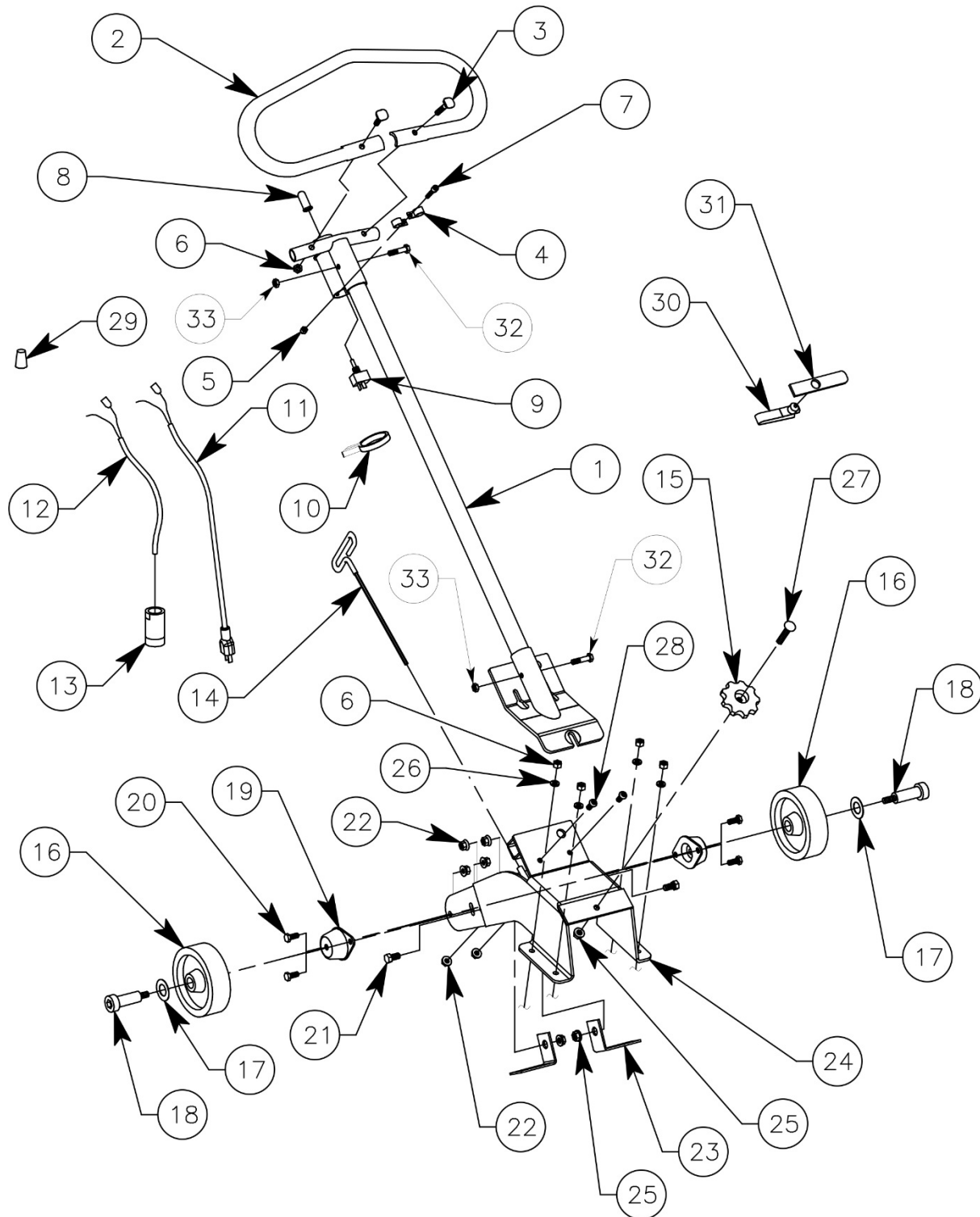


Replacement Parts Diagram FCS10 Floor Covering Scraper



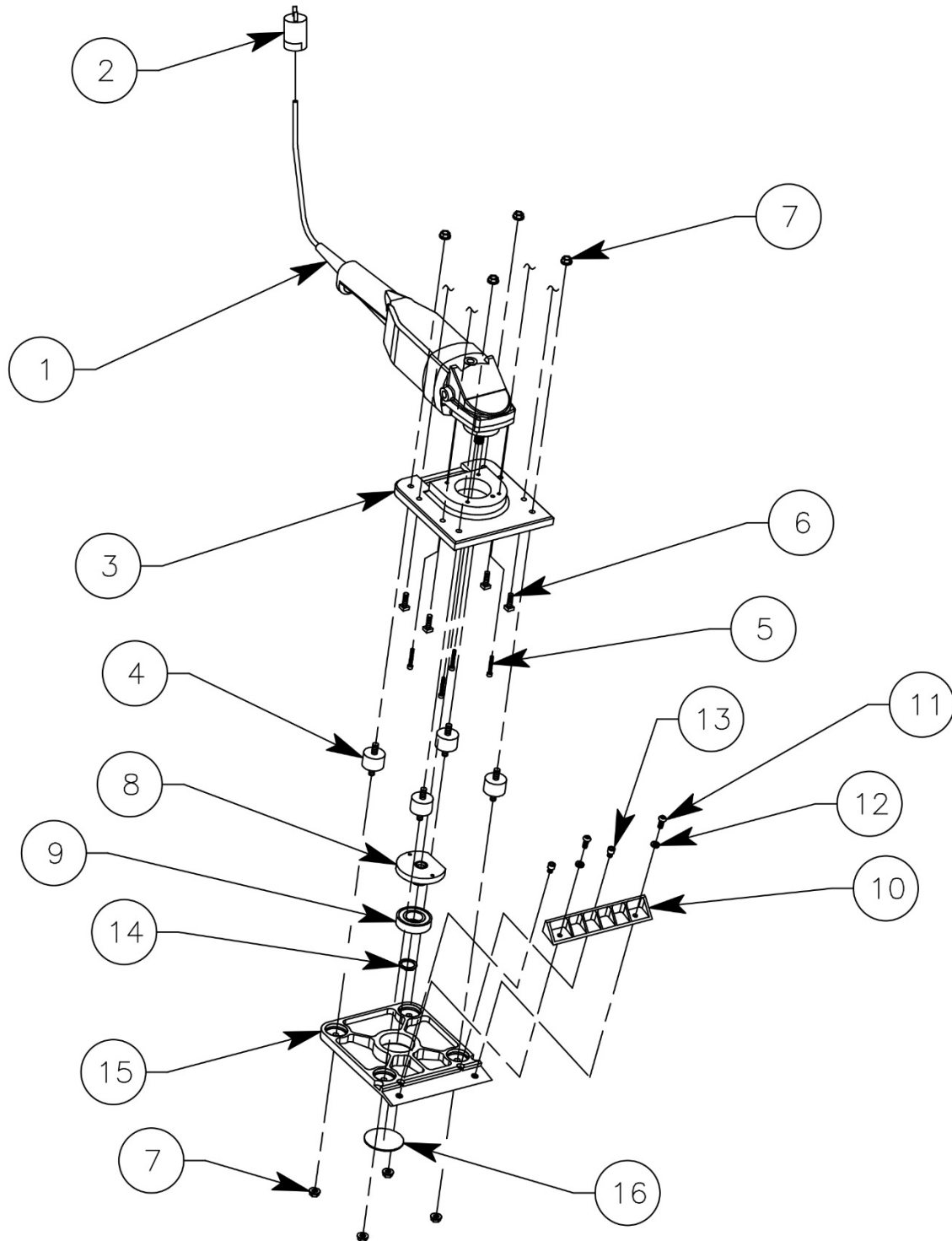
Replacement Parts Diagram Handle Assembly FCS10 Floor Covering Scraper



Replacement Parts Diagram Handle Assembly FCS10 Floor Covering Scraper

REFERANCE NUMBER	PART NUMBER	DESCRIPTION	QUANTITY
1	FCS10-0100	Handle Assembly	1
2	FCS10-0030	Handle, Loop	1
3	FCS10-0220	Bolt, T-Head, Special	2
4	FCS10-0170	Clamp, Wire, Nylon	2
5	53030000	Nut, Hexagon, Nylock, #10-24 UNC, Plated	1
6	53050000	Nut, Hexagon, Nylock, 5/16-18 UNC, Plated	6
7	60030700	Screw, Socket Head, #10-24 UNC, Plated	1
8	SG12-0300-020	Cover, Master Switch	1
9	SG12-0300-010	Switch, Master Toggle	1
10	FCS10-0180	Clamp, Loop, Cable	1
11	FCS10-0230	Cable, Plug/Switch	1
12	FCS10-0240	Cable, Switch/Plug	1
13	FCS10-0160	Plug, Twist Lock, Female, 2 Pole	1
14	FCS16-0260	T-Handle, Hex Key, 3/16"	1
15	EP8HL-0070	Knob	1
16	FCS10-0190	Wheel, Composite, 5"	2
17	200682	Washer, Fiber	2
18	FCS10-0210	Bolt, Shoulder, Special	2
19	FCS10-0110	Mount, Rubber	2
20	15050600	Screw, Cap, 5/16-18 UNC x 3/4", Plated	4
21	15060600	Screw, Cap, 3/8-16 UNC x 3/4", Plated	2
22	39050000	Nut, Hexagon, Flange, 5/16-18 UNC, Plated	2
23	SG12-0370	Scraper, Wheel	2
24	FCS10-0050	Frame Weldment	1
25	86060000	Nut, Hexagon, Flange, 3/8-16 UNC, Plated	3
26	17040000	Washer, Flat, 5/16", Plated	4
27	87061800	Bolt, Carriage, 3/8-16 UNC x 2-1/4", Plated	1
28	36050800	Screw, Machine, Truss Head, 5/16-18 UNC x 1, Plated	2
29	WIRE NUT Y	Nut, Wire (Yellow)	1
30	9058	Spring And Button	1
31	FCS10-0260	Tab, Spacer	1
32	15051400	Screw, Cap, 5/16-18 UNC x 1-3/4", Plated	2
33	52050000	Nut, Lock, 2-Way, 5/16-18 UNC, Plated	2

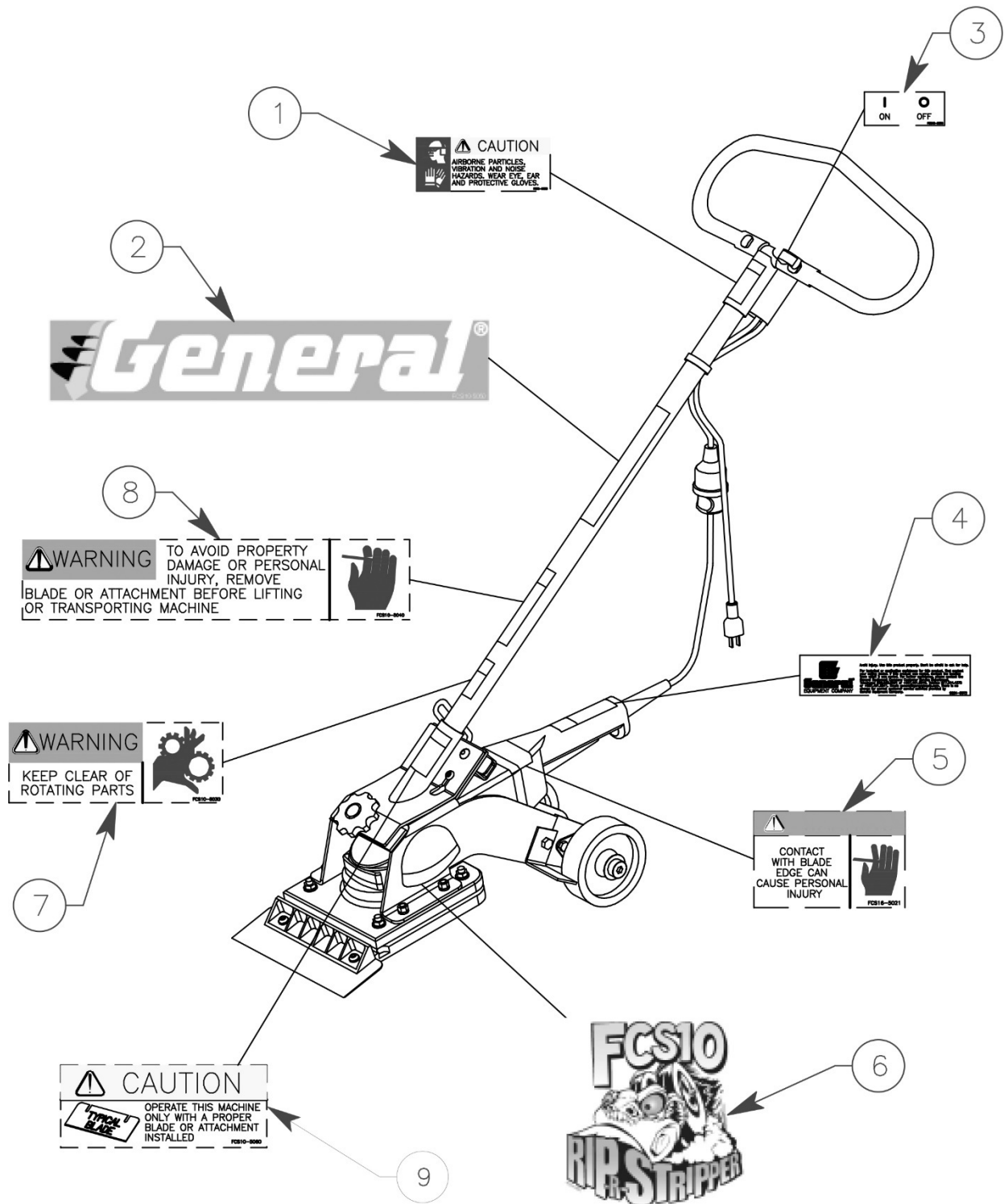
Replacement Parts Diagram Power Head Assembly FCS10 Floor Covering Scraper



Replacement Parts Diagram Power Head Assembly FCS10 Floor Covering Scraper

REFERANCE NUMBER	PART NUMBER	DESCRIPTION	QUANTITY
1	FCS10-0201	Grinder, Metabo	1
2	FCS10-0150	Plug, Twist Lock, Male, 2 Pole	1
3	FCS10-0020	Top Plate	1
4	FCS16-0311-010	Mount, Rubber	4
5	60053501	Capscrew, Socket Head, M5 x 8 X 35mm	4
6	FCS10-0250	Bolt, Square Head, 5/16-18 x 1", Plated	4
7	86060000	Nut, Hexagon, Flange, 3/8-16 UNC, Plated	8
8	FCS10-0071	Flywheel	1
9	6206-2RS	Bearing	1
10	FCS10-0060	Clamp, Blade	1
11	55050600	Screw, Button Head, 5/16-18 UNC x 3/4", Plated	2
12	16050000	Washer, Lock, 5/16", Plated	2
13	60050300	Capscrew, Socket Head, 5/16-18 x 3/8", Plated	2
14	5160-118	Ring, Snap, External	1
15	FCS10-0010	Plate, Exciter	1
16	FCS10-0140	Plug, Welsh Type	1

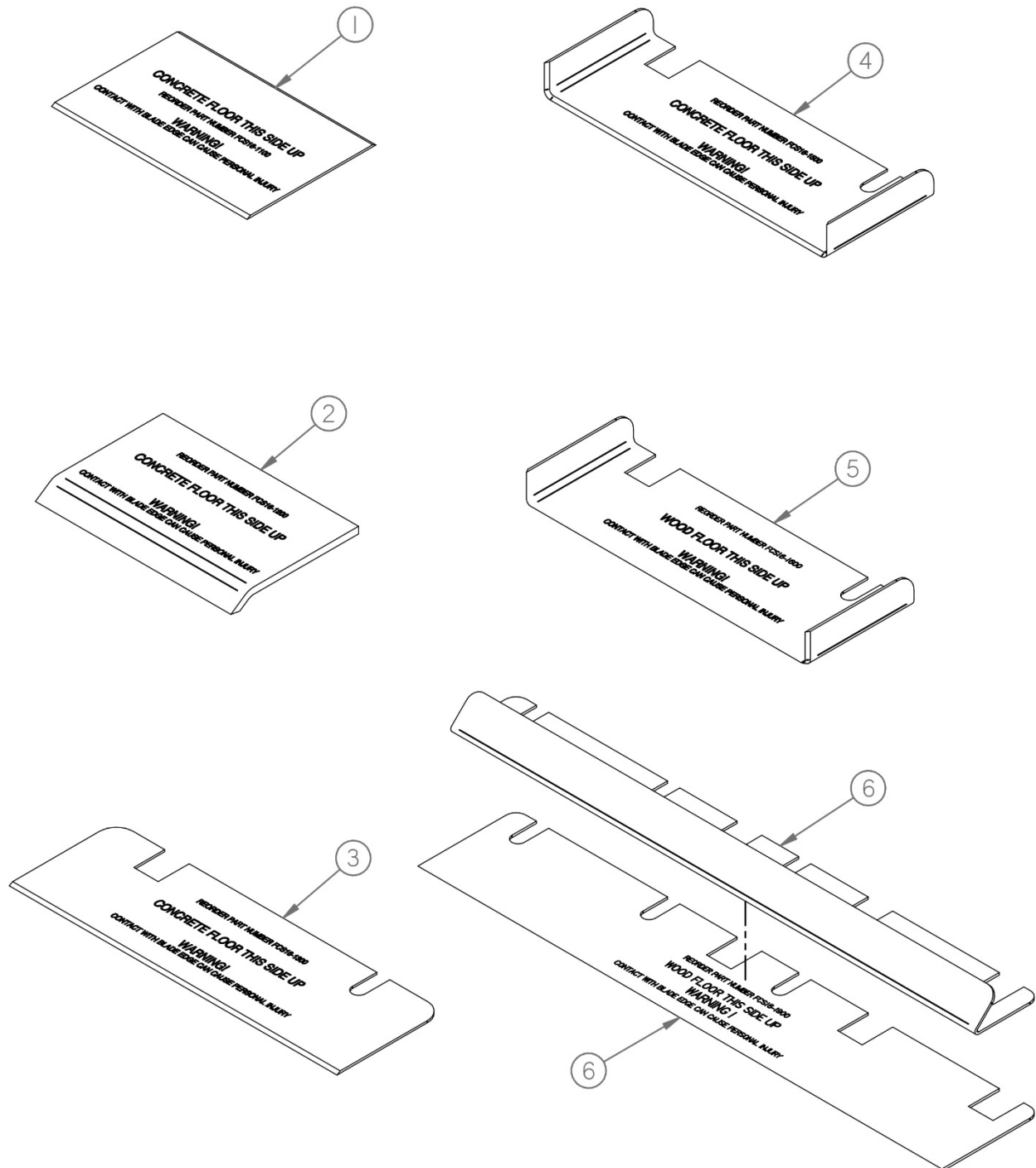
Replacement Parts Diagram Decals FCS10 Floor Covering Scraper



Replacement Parts Diagram Decals FCS10 Floor Covering Scraper

REFERANCE NUMBER	PART NUMBER	DESCRIPTION	QUANTITY
1	FCS5-5020	Decal, Caution	1
2	GECD-5020	Decal, General	1
3	FCS10-5020	Decal, Switch	1
4	SG24-5072	Decal, Assistance	1
5	FCS16-5021	Decal, Warning	1
6	FCS10-5051	Decal, Rip-R-Stripper	2
7	FCS10-5030	Decal, Warning	1
8	FCS10-5040	Decal, Warning	1
9	FCS10-5060	Decal, Use Blade	1

Replacement Cutting Blades FCS10 Floor Covering Scraper



Replacement Cutting Blades FCS10 Floor Covering Scraper

Reference Number	Part Number	Description	Quantity
1	FCS16-1100	Blade, Straight, 6L General Purpose Removal Projects On Both CONCRETE And WOOD Surfaces	1
2	FCS16-1200	Blade, Removal, Mastic, 6L Mastic And Thin Film Coverings Removal On CONCRETE Surfaces ONLY	1
3	FCS16-1300	Blade, Straight, 10L General Purpose Removal Projects On Both CONCRETE And WOOD Surfaces	1
4	FCS16-1500	Blade, Scoring, 8L Glued Carpets And Sheet Type Linoleum, Rubber, PVC, Etc. Products On CONCRETE Surfaces ONLY	1
5	FCS16-1600	Blade, Scoring, 8L Glued Carpets And Sheet Type Linoleum, Rubber, PVC, Etc. Products On WOOD Surfaces ONLY	1
6	FCS16-1900	Blade, Straight, 16L Includes Blade Stiffener General Purpose Removal Projects On Both CONCRETE and WOOD Surfaces	1