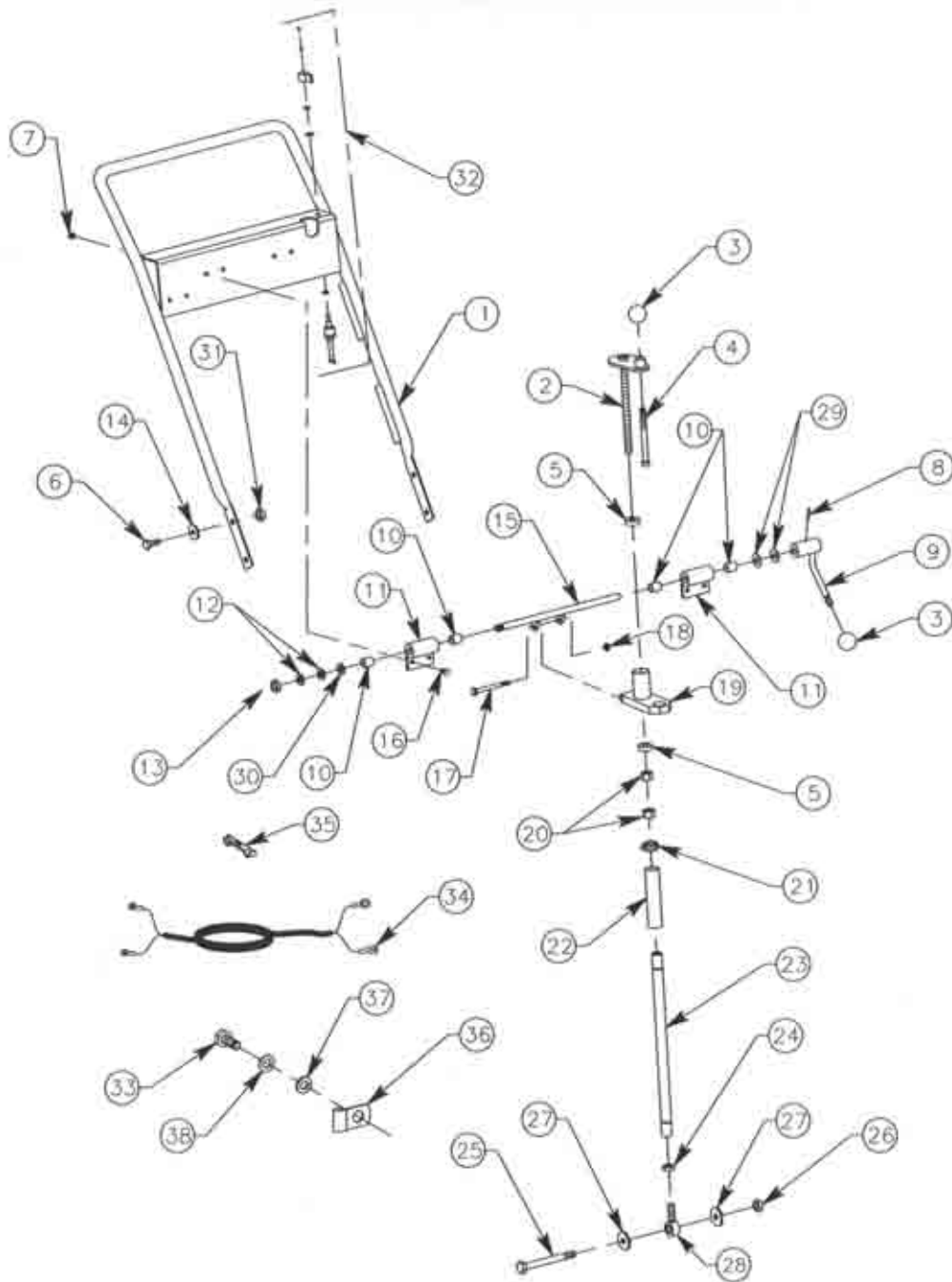


Replacement Parts Diagrams

CS8 Series Crack Saw



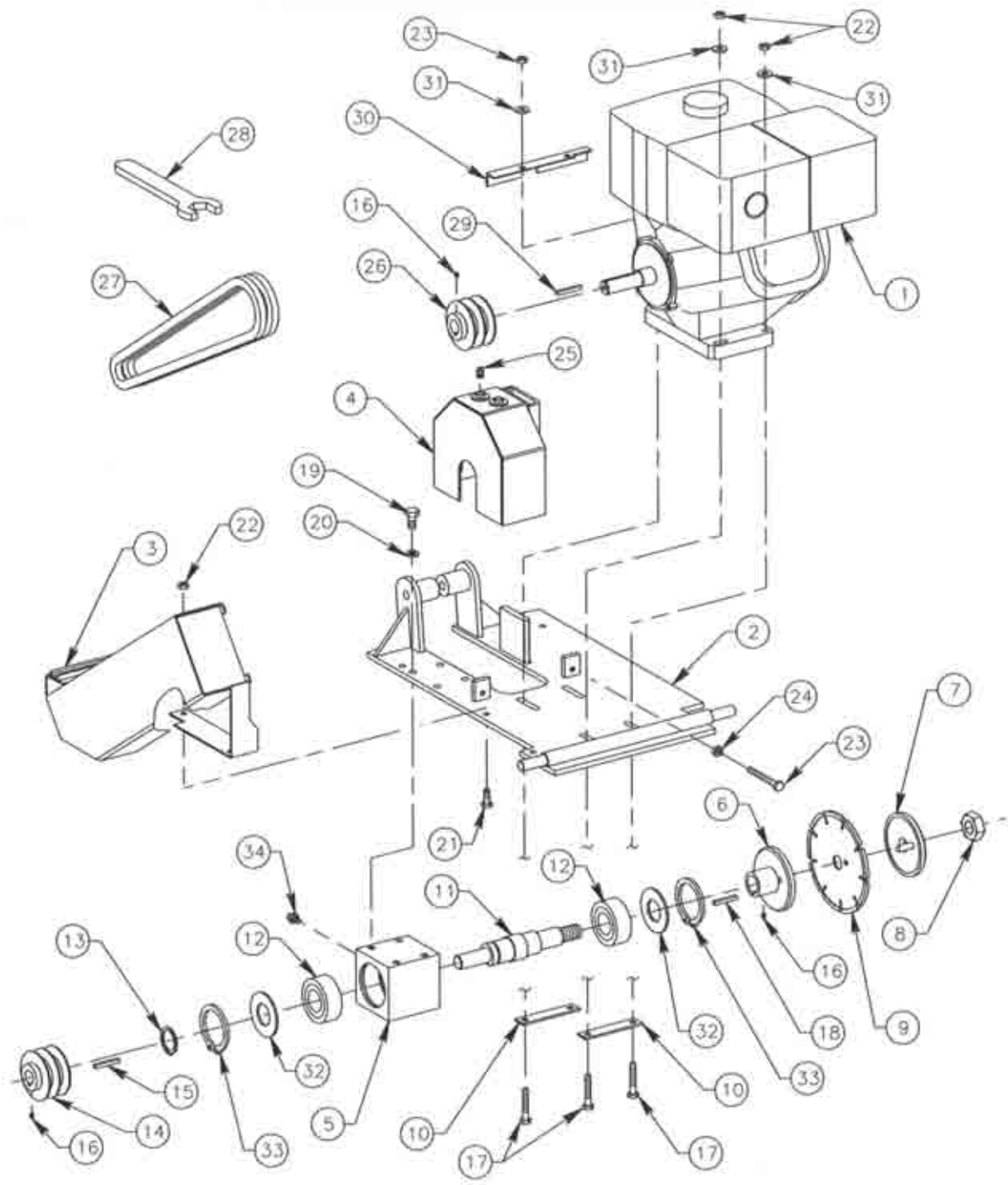
Operator Handle Assembly CS8/G Series Crack Saw



Operator Handle Assembly CS8/G Series Crack Saw

Reference Number	PART NUMBER	DESCRIPTION	QTY
1	CS8-0220	Handle, Operator	1
2	CS8-0130	Screw, Crank	1
3	SP8-0120	Knob	1
4	SP8-0410	Screw, Socket Head, Special	1
5	99502H	Bearing	2
6	15081210	Screw, Cap, 1/2-13 UNC x 1-1/2", Plated, Grade 5	4
7	53060000	Nut, Hexagon, Nylock®, 3/8-16 UNC, Plated	4
8	20031200	Pin, Roll, 3/16" x 1-1/2"	1
9	CS8-0240	Lever	1
10	CS8-0420	Bearing, Oilite®	4
11	CS8-0190	Hinge, W/Bearings	2
12	84100000	Washer, Bellville	2
13	19100001	Nut, Hexagon, Self-Locking, 5/8-18 UNF, Plated	1
14	17080000	Washer, Flat, 1/2", Plated	4
15	CS8-0200	Shaft, Over Center	1
16	15060800	Screw, Cap, 3/8-16 UNC x 1", Plated, Grade 5	4
17	81063000	Screw, Cap, 3/8-16 UNC x 3-3/4", Stainless	1
18	18060000	Nut, Hexagon, 3/8-16 UNC, Plated	1
19	CS8-0210	Tube, Bearing	1
20	18100011	Nut, Hexagon, 5/8-11 UNC, LH, Plated	2
21	56200000	Clamp, Hose, 1-1/4"	1
22	SP8-0160	Boot, Rubber	1
23	SP8-0170	Barrel, Adjusting	1
24	40100011	Nut, Hexagon, Jam, 5/8-11 UNF, LH, Plated	1
25	15104800	Screw, Cap, 5/8-11 UNC x 6", Plated, Grade 5	1
26	18100000	Nut, Hexagon, 5/8-11 UNC, Plated	1
27	17100000	Washer, Flat, 5/8", Plated	1
28	SP8-0180	Rod End, Male	1
29	200682	Washer, Plastic	2
30	SG24-4000	Washer, Flat 5/8", Special, Plated	1
31	53080000	Nut, Hexagon, Nylock®, 1/2-13 UNC, Plated	4
32	CS8-0350	Switch, On/Off	1
33	15040000	Screw, Cap, 1/4-20 UNC x 5/8", Plated	1
34	CS8/GH-0370	Harness, Wire	1
35	22X18 T-TAP	T-Tap, 22-18 Gauge Wire	1
36	COV-0411	Clamp, Plated	1
37	16040000	Washer, Lock, 1/4", Plated	1
38	17040000	Washer, Flat, 1/4", Plated	1

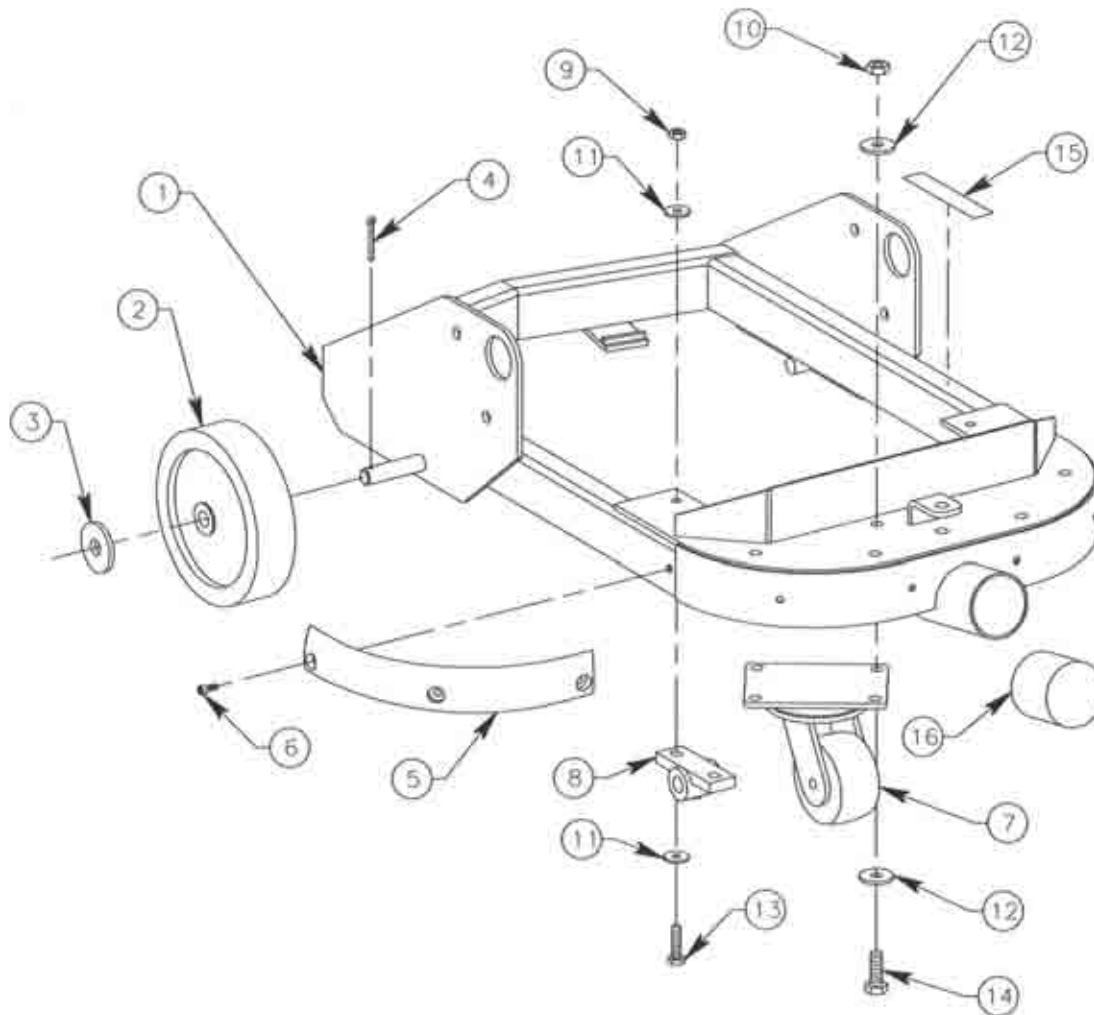
Engine Mount Assembly CS8 Series Crack Saw



Engine Mount Assembly CS8 Series Crack Saw

Reference Number	PART NUMBER	DESCRIPTION	QTY
1	GX340K1QXC9	Engine, Honda, 11 HP	1
2	CS8-0020	Plate, Engine Mount	1
3	CS8-0050	Guard, Belt	1
4	CS8-0090	Guard, Blade	1
5	CS8-0230	Block, Bearing	1
6	CS8-0100	Body, Hub	1
7	CS8-0040	Plate, Hub	1
8	18160011	Nut, Hexagon, 1-14 UNF, LH Thread, Plated	1
9	Reference	Blade, 8"	1
10	CS8-0300	Bracket, Engine Mount	2
11	CS8-0030	Shaft, Arbor	1
12	SP8-0421	Bearing, Modified	2
13	SP8-0290	Ring, Retaining, External	1
14	CS8-0270	Sheave, Arbor Shaft	1
15	63041600	Key, Square, 1/4" x 2"	1
16	31040200	Screw, Set, Cup Point, 1/4-20 UNC x 1/4"	4
17	15062000	Screw, Cap, 3/8-16 UNC x 2-1/2", Plated, Grade 5	4
18	63041200	Key, Square, 1/4" x 1-1/2"	1
19	15081000	Screw, Cap, 1/2-13 UNC x 1-1/4", Plated, Grade 5	4
20	16080000	Washer, Lock, 1/2", Plated	4
21	15061000	Screw, Cap, 3/8-16 UNC x 1-1/4", Plated, Grade 5	3
22	53060000	Nut, Hexagon, Nylock®, 3/8-16 UNC	7
23	CS8-0470	Screw, Cap, 3/8-16 UNC x 3-1/2", Full Thread, Grade 2	2
24	18060000	Nut, Hexagon, 3/8-16 UNC, Plated	2
25	26040000	Plug, Pipe, 1/4" NPTF, Square	2
26	CS8-0260	Sheave, Engine	1
27	BX34	V-Belt	2
28	CS8-0400	Wrench, 1-1/2"	1
29	63042000	Key, Square, 1/4" x 2-1/2"	1
30	CS8-0070	Thrust Plate, V-Belt, Tension	1
31	17060000	Washer, Flat, 3/8"	4
32	85340000	Bushing, Machinery	2
33	CS8-0490	Ring, Retaining, Internal	2
34	SP8-0590	Fitting, Grease, Straight	1

Frame Assembly CS8 Series Crack Saw

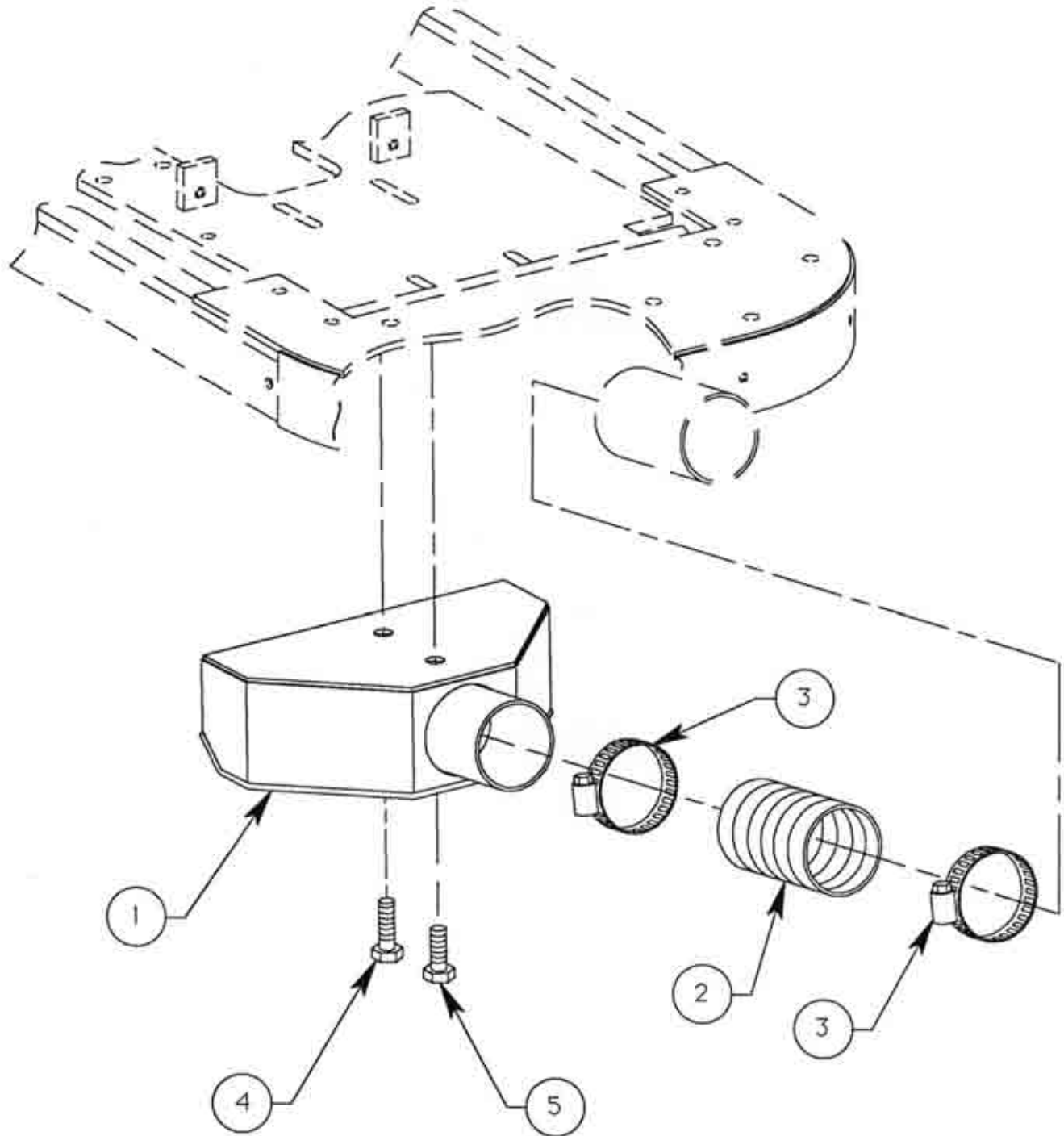


Frame Assembly

CS8 Series Crack Saw

Reference Number	PART NUMBER	DESCRIPTION	QTY
1	CS8-0010	Frame, Main	1
2	SG24-0260	Wheel	2
3	17120000	Washer, Flat, 3/4", Plated	2
4	22031600	Pin, Cotter, 3/16" x 2", Plated	2
5	CS8-0410	Bumper, Rubber	2
6	27040500	Screw, Cap, Countersunk, 1/4-20 UNC x 5/8"	6
7	CS8-0250	Wheel, Caster	2
8	CS8-0280	Bearing, Pillow Block	2
9	53060000	Nut, Hexagon, Nylock®, 3/8-16 UNC, Plated	4
10	53080000	Nut, Hexagon, Nylock®, 1/2-13 UNC, Plated	8
11	17060000	Washer, Flat, 3/8", Plated	4
12	17080000	Washer, Flat, 1/2", Plated	8
13	60061200	Screw, Cap, Socket, 3/8-16 UNC x 1-1/2", Plated	4
14	15081400	Screw, Cap, 1/2-13 UNC x 1-3/4", Plated, Grade 5	8
15	CS8-0460	Pad, Non-Slip	1
16	SP8-0350	Cap, Dust Cover	1

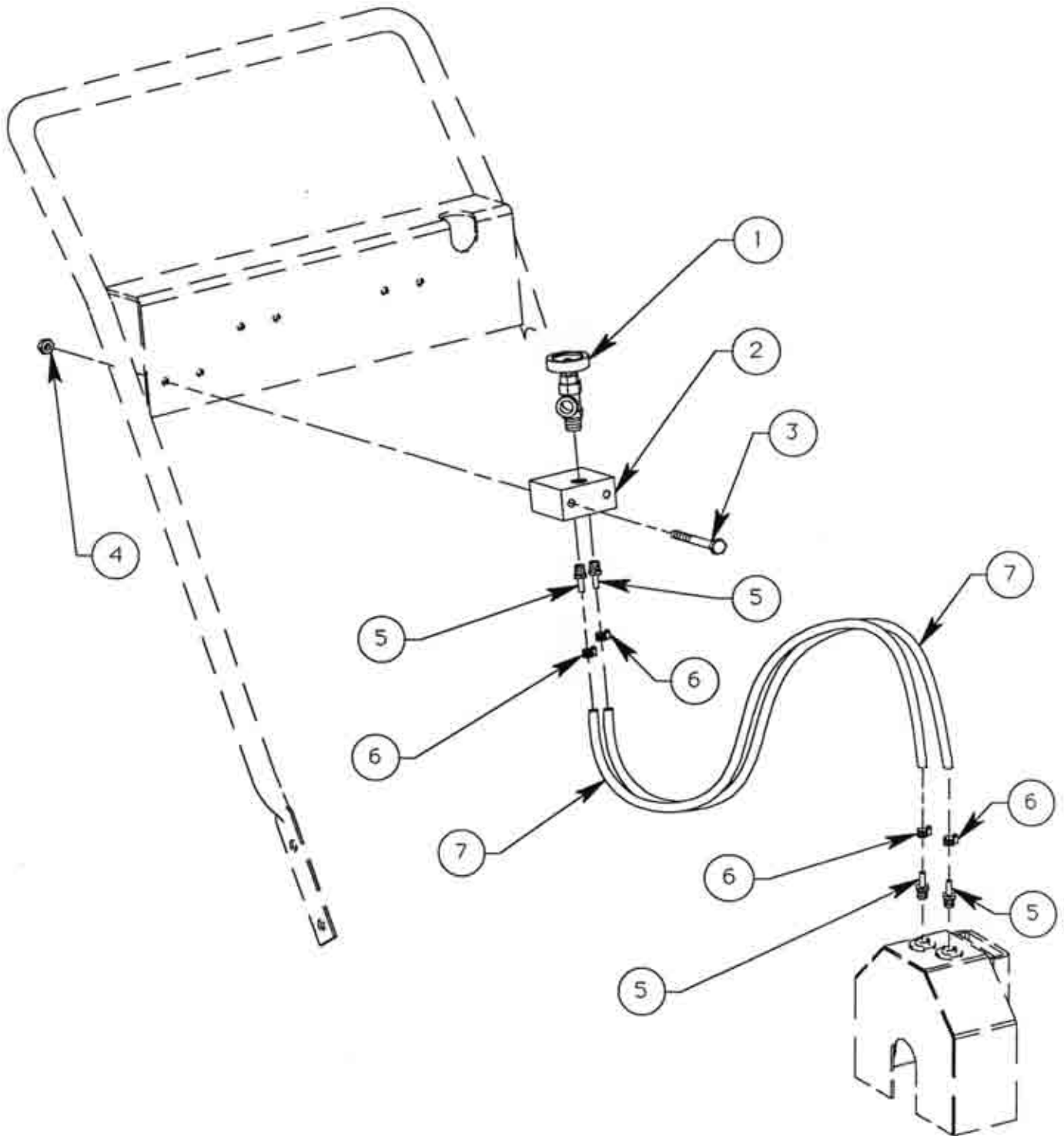
Dustpan/Vacuum Port Assembly CS8 Series Crack Saw



Dustpan/Vacuum Port Assembly CS8 Series Crack Saw

Reference Number	PART NUMBER	DESCRIPTION	QTY
1	CS8-0310	Shroud, Vacuum	1
2	CS8-0380	Hose, Vacuum	1
3	56480000	Clamp, Hose, 3"	2
4	15081000	Screw, Cap, 1/2-13 UNC x 1-1/4", Plated, Grade 5	1
5	15080800	Screw, Cap, 1/2-13 UNC x 1", Plated, Grade 5	1

Water Cutting Kit Assembly CS8 Series Crack Saw



Water Cutting Kit Assembly CS8 Series Crack Saw

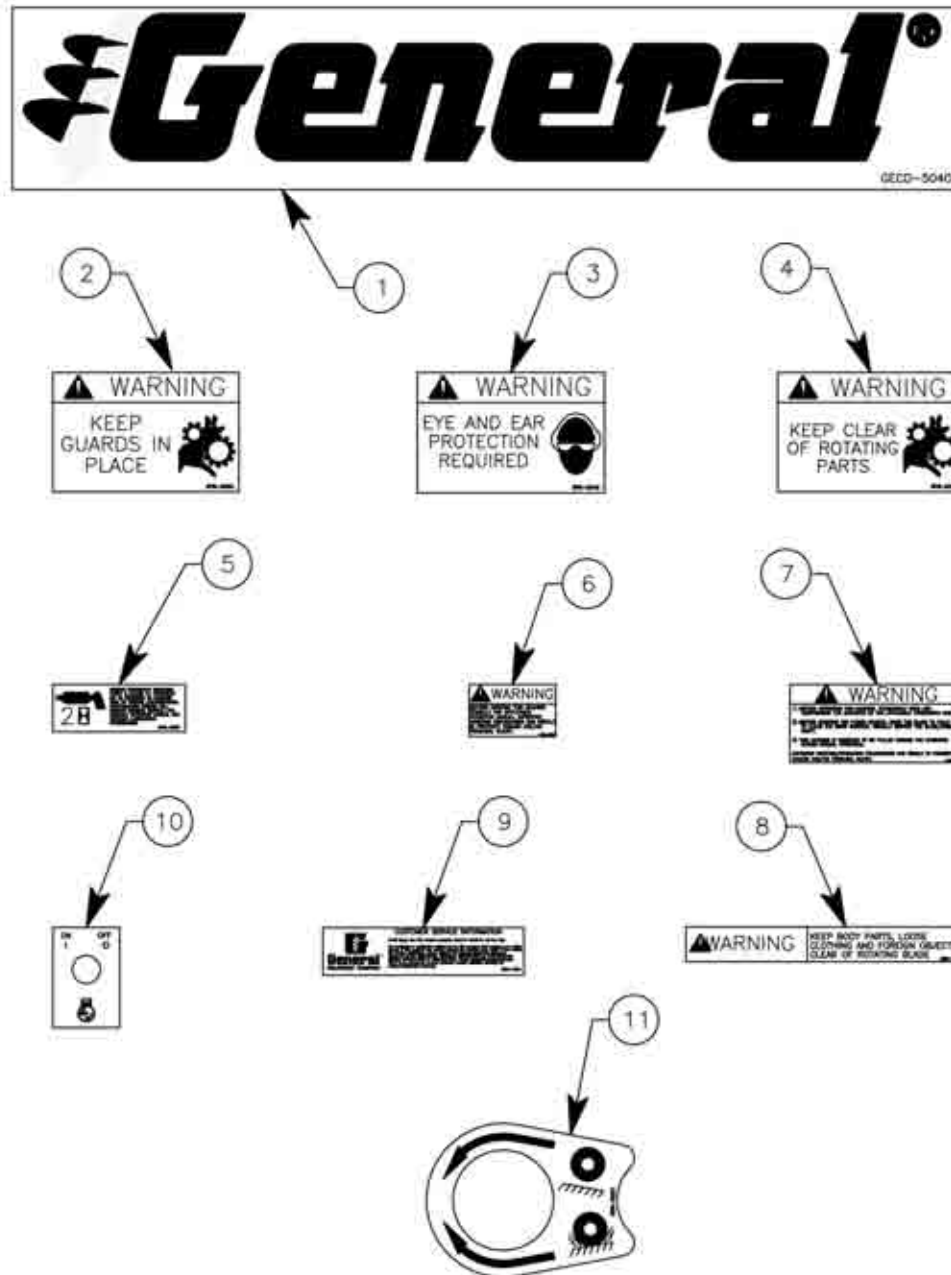
Reference Number	PART NUMBER	DESCRIPTION	QTY
1	SP8-0030	Valve, Water	1
2	CS8-0440	Block, Manifold	1
3	15062800	Screw, Cap, 3/8-16 UNC x 3-1/2", Plated, Grade 5	2
4	53060000	Nut, Hexagon, Nylock®, 3/8-16 UNC, Plated	2
5	CS8-0320	Adapter, Hose	4
6	56100000	Clamp, Hose, 5/8"	4
7	CS8-0330	Hose, Water	2

Propane Conversion Assembly CS8 Crack Saw

Reference Number	PART NUMBER	DESCRIPTION	QTY
1	5305	Cylinder, Propane	1
2	TB-6	Bracket, Propane Cylinder	1
3	CS8-0360	Mount, Propane Tank	1
4	SG24-0290	Bracket, Propane Valves	1
5	7141M	Adapater	1
6	7141F	Connector	1
7	149F-6-4	Fitting, 90°	1
8	4412-4-6S	Fitting, HP Straight	1
9	FC321-06	Hose	1
10	3865	Valve, Relief	1
11	HC8346	Fitting	1
12	15040500	Screw, Cap, 1/4-20 UNC x 5/8", Plated	4
13	VFF30-2-4	Fuelock, Filter, Vacuum	1
14	17060000	Washer, Flat, 3/8", Plated	6
15	TB-2-60	Toggle	1
16	650-002	Cap, Vacuum	2
17	18060000	Nut, Hex, 3/8-16 UNC, Plated	6
18	15061000	Screw, Hex Head, 3/8-16 UNC x 1-1/4", Plated	6
19	CS8-5060	Decal, Propane Start	1
20	56100000	Clamp, Hose, 5/8"	2
21	33SB	Hose Nipple	1
22	AF4-66	Backcheck, Vacuum	1
23	11SB	Nipple, Hose	1
24	2247-4-4S	Elbow	1
25	501-123	Hose, Fuel	1
26	50-G	Regulator, Fuel	1
27	506-009	Hose, Vacuum	1
28	2F-256	Spud	1
29	2F-158	Fitting	1

Decals

CS8 Series Crack Saw



Replacement Decals CS8 Series Crack Saw

Reference Number	PART NUMBER	DESCRIPTION	QTY
1	GECD-5040	Decal, General	1
2	SP8-5050	Decal, Warning	2
3	SP8-5040	Decal, Warning	1
4	SP8-5030	Decal, Warning	2
5	SP8-5061	Decal, Grease	1
6	CS8-5050	Decal, Warning	2
7	CS8-5030	Decal, Operation	1
8	CS8-5020	Decal, Warning	2
9	SG24-5072	Decal, Assistance	1
10	CS8-5070	Decal, Shut-Off	1
11	SP8-5020	Decal, Depth Control	1