

FEATURES

- Designed for magnetic retention
- Dual PCD segment configuration
- Sacrificial, diamond stabilizer segment to minimize cap damage
- Color coded and rotation direction marked

PCD M-SERIES FLOOR COATINGS REMOVAL SYSTEM

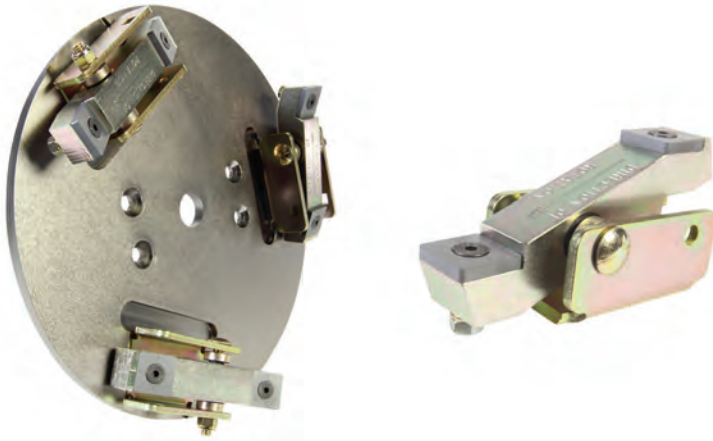
The PCD M-Series Floor Coatings Removal System is designed for use with General’s MAGNETACH® Tooling System and competitive surface grinding products utilizing the Lavina/EDCO magnetic tooling mounting configuration. The PCD (Polycrystalline Diamond) tooling is comprised of a diamond grit that is fused together under high pressure along with a catalytic metal. Used to remove thin-to-medium glues, mastics, covering materials and cement levelers from concrete surfaces. Sacrificial segments are provided for the PCD inserts to aggressively remove materials while at the same time acting as stabilizers and a depth guide to minimize damage to the cap surface. PCD tooling is direction sensitive and available in left- and right-hand rotation direction for use on single and dual head concrete grinding equipment.

SPECIFICATIONS

Basic Shoe Dimensions	3.05” (77.5 mm) L x 2.125” (54 mm) W x .40” (10.1 mm) H
Segments Per Shoe	2 PCD; 1 diamond, sacrificial segment
Part Number Specification	Right-Hand rotation: SG24-2600RH; color: blue Left-Hand rotation: SG24-2610LH; color black
Attachment Configuration	Magnetic/Trapezoid, compatible with applicable General/Lavina/EDCO configurations
Weight, Pack of 3	1.3 lbs (0.6 kg)

NOTE: MAGNETACH PCD rotation direction is determined as viewed from the machine operator position. Right-hand rotation denotes clockwise disc/tooling rotation. Left-hand rotation denotes counterclockwise dis/tooling rotation.

All specifications are general in nature and are not intended for specific application purposes. General Equipment Company reserves the right to make changes in design, engineering, or specifications and to add improvements or discontinue manufacture at any time without notice or obligation. Consult applicable Operator Manual before utilizing. Refer to OSHA 2207 and/or current revisions for specific safety information. Names depicted are the registered trademarks of their respective owners.



FEATURES

- Designed for magnetic retention
- 8-sided, Tungsten Carbide inserts
- Dual inserts minimize surface cap damage
- Plated finish resists corrosion
- Rotation direction marked

SCRAPE-R-TACH™ M-SERIES FLOOR COATINGS REMOVAL SYSTEM

The SCRAPE-R-TACH M-Series Coatings Removal System is designed for use with General’s MAGNETACH® Tooling System and competitive surface grinding products utilizing the Lavina/EDCO magnetic tooling mounting configuration. The SCRAPE-R-TACH System efficiently removes a wide variety of urethanes, epoxies, paints and many other materials from concrete surfaces with unequaled ease and productivity. It can be a cost-effective alternative to costly shot blasting, grinding, manual scraping or use of dangerous chemicals for a wide variety of coatings removal projects. The two Quad-Sert™ inserts are constructed of a high Colbalt-grade, Tungsten Carbide and incorporate eight scraping edges for the lowest removal cost of any competitive system. It’s also the only scraping system that is both statically and dynamically stable which dramatically minimizes surface cap damage to further reduce project costs.

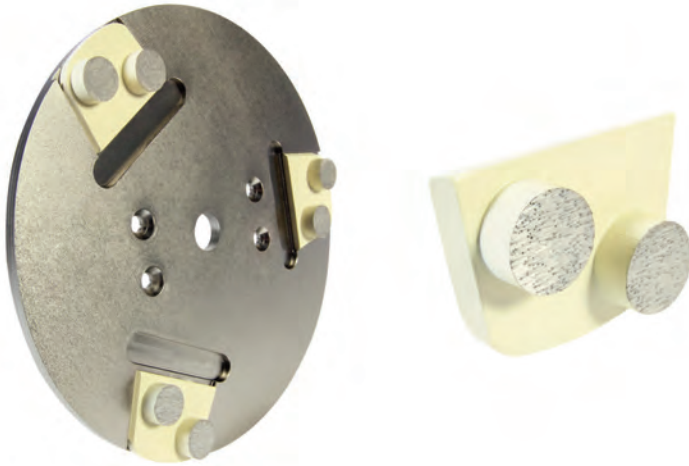
The SCRAPE-R-TACH System is the only product using Lord®-type, elastomeric mounts that allow the inserts to pivot about two axis. This unique design feature better follows minor variances in floor contours to maximize the material being removed. Their inherent elasticity better reduces the effects of damaging shock loads to the machine when anchor bolts or other floor obstructions are encountered. Available in left- and right-hand rotation direction for use on single and dual head concrete grinding equipment.

SPECIFICATIONS

Basic Dimensions	5-1/4 inch (133 mm) L x 2 inch (52 mm) W x 1-3/4 inch (45 mm) H
Inserts Per Unit	2
Part Number Specification	Right-Hand rotation: SG24-1901RH Left-Hand rotation: SG24-1902LH
Attachment Configuration	Magnetic/Trapezoid, compatible with applicable General/Lavina/EDCO configurations
Weight, each	2.1 lbs (1 kg)

NOTE: SCRAP-R-TACH rotation direction is determined as viewed from the machine operator position. Right-hand rotation denotes clockwise disc/tooling rotation. Left-hand rotation denotes counterclockwise disc/tooling rotation.

All specifications are general in nature and are not intended for specific application purposes. General Equipment Company reserves the right to make changes in design, engineering, or specifications and to add improvements or discontinue manufacture at any time without notice or obligation. Consult applicable Operator Manual before utilizing. Refer to OSHA 2207 and/or current revisions for specific safety information. Names depicted are the registered trademarks of their respective owners.



FEATURES

- Designed for magnetic retention
- Omni-directional machine loading
- Soft/medium and hard concrete bonds
- Wide range of grit sizes

DIAM-A-TACH™ M-SERIES DIAMOND SEGMENT GRINDING SYSTEM

The DIAM-A-TACH M-Series Diamond Segment Grinding System is designed for use with General’s MAGNETACH Tooling System and competitive surface grinding products utilizing the Lavina/EDCO magnetic tooling mounting configuration. The M-Series system offers solutions for a wide variety of surface preparation job applications. Matrix bonds are available for both soft/medium and hard concrete formulations with a grit range of 18 to 100. Decreasing grit size allows for meeting specific surface finishes requirements up to a pre-polish condition. The double segment design configuration offer the best combination of aggressiveness versus service life for the applied machine weight. Depending on the application, the matrix formulations can be used on things such as green concrete or fully cured concrete, high tensile epoxies and many thin-film coatings.

SPECIFICATIONS

Basic Dimensions	3.05" (77.5 mm) L x 2.125" (54 mm) W x .73" (18.5 mm) H
Segments Per Shoe	2
Segment Grits Available	Hard concrete: 18, 30, 50, 100; color: tan Soft/medium concrete: 18, 30, 50, 100; color: gray
Attachment Configuration	Magnetic/Trapezoid. compatible with applicable General/Lavina/EDCO configurations
Grinding Area Per Shoe	1.52 in ² (981.3 mm ²)
Weight, Pack of 3	1.75 lbs (34 kg)

All specifications are general in nature and are not intended for specific application purposes. General Equipment Company reserves the right to make changes in design, engineering, or specifications and to add improvements or discontinue manufacture at any time without notice or obligation. Consult applicable Operator Manual before utilizing. Refer to OSHA 2207 and/or current revisions for specific safety information. Names depicted are the registered trademarks of their respective owners.