

The logo for General Equipment Company features the word "General" in a bold, orange, italicized sans-serif font. To the left of the text is a stylized graphic of three horizontal bars of increasing length, colored yellow, orange, and black from top to bottom.

# General<sup>®</sup>

**EQUIPMENT COMPANY**

Issue Date October 2023 | Version 20

A man with a beard, wearing a brown cap, safety glasses, and blue gloves, is using a red and black General equipment tool to dig a hole in the ground. The tool has a white fuel tank and a black handle. The background is a collage of various General equipment, including a large orange fan, a smaller engine, and a person using a tool.

**NO ONE ELSE  
DOES IT  
BETTER<sup>™</sup>**

# PRICE LIST

**HOLE DIGGERS • SURFACE PREP • VENTILATION**

## ***You've Come to the Right Place...***

No bull, straightforward, honest. If we don't think our product is right for the job, we'll tell you straight up. That's us in a nutshell. Dealers, distributors and contractors in multiple industry segments from construction, industrial/commercial and flooring to safety, utilities, rental and more have come to depend on us and our products. We care deeply about the product and service we provide you, how it affects your business and how you are treated as our customer. Plain and simple.

You can't go wrong. The proofs in the pudding. Six plus decades under our belt producing extreme duty, contractor grade, industry leading products that have stood the test of time says something. What's important is that you're going to benefit from the profits generated by our low maintenance, long service life products, period, not to mention a lot less frustration. Everything you see in our line-up is designed to take a beating plus how sweet it handles and performs on the jobsite. You'll experience the difference this makes in every product with details others don't pay attention to. We build commercial grade, extreme duty, light construction equipment. Simply the best.

While best in class product and profitability are important, you'll get even greater peace of mind. Direct, 24/7, year-round, customer service will never leave you stranded. It's just not in our nature. That service is backed up by a deeply knowledgeable and well-trained staff ready to share, solving whatever issues you may encounter or helping you or your customers determine the right solution to meet current and future business needs. That's what we're here for.

So, feel free, check out our catalogs and website for more information or to purchase online. If you need help, just pick up the phone and give us a call or send us an email. Heck, stop by if you feel so inclined. We're glad to have you, glad to assist and here to make you successful. No bones about it.

Thanks for stopping by and we look forward helping you.



President  
General Equipment Company

*The leader in extreme duty, light construction equipment...  
Engineered to perfection, absolutely no one does it better.™*

**HOLE DIGGING ..... 4-23**  
    HAND-HELDS.....4-9  
    TOWABLES..... 10-13  
    HYDRAULIC ATTACHMENTS ..... 14-23

**SURFACE PREPARATION..... 24-39**  
    FLOOR STRIPPERS..... 24-27  
    SURFACE GRINDERS ..... 28-33  
    EDGE GRINDERS .....34  
    PLANERS ..... 35-36  
    CRACK SAWS .....37  
    ROTARY ASPHALT CUTTERS.....38  
    MANUAL IMPACT BREAKERS .....39

**DUST COLLECTION ..... 40**  
    DUST COLLECTORS.....40

**VENTILATION ..... 41-45**  
    HAZARDOUS.....41  
    NON-HAZARDOUS ..... 42-43  
    SPECIALTY DRYING/COOLING/AIR SCRUBBING ..... 44-45

**TERMS & CONDITIONS ..... 46**

**WARRANTY..... 47**





**242H**

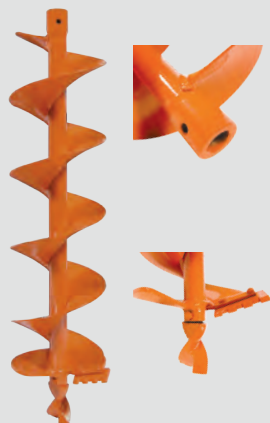


**262H**

## 242H & 262H EPIC® SERIES HAND-HELD HOLE DIGGERS

MODEL	DESCRIPTION	WEIGHT (LBS)	MSRP \$
242H	Hole Digger, 1 man, 1.3 HP, Honda® GX35 gasoline engine, 4-stroke, 1 inch round auger drive connection. Includes auger pin, less auger.	26.0	1,295.00
262H	Hole Digger, 2 man, 4.4 HP, Honda® GCV160 gasoline engine, 4-stroke, 1 inch round auger drive connection. Includes auger pin, less auger.	58.0	2,465.00

► Refer to pages 4 and 5 for related augers, auger extensions, pins, blades and screw bits.



**2350-8E**

## 242H & 262H - 2350 BOR-MAX® SERIES EARTH AUGERS

PART NUMBER	FLIGHTING OD (IN)	CUTTING DIA (IN)	EFFECTIVE DIGGING DEPTH (IN)	ROUND DRIVE CONNECTION (IN)	WEIGHT (LBS)	COMPATIBLE PRODUCT	MSRP \$
2350-2E	2-1/4	2.5	30	1	6.4	242H, 262H	188.00
2350-3E	3-1/4	3.5			7.4		190.00
2350-4E	4	5.2			11.6		195.00
2350-6E	6	7.5			13.6		208.00
2350-8E	8	9.5			15.8		222.00
2350-10E	10	10.5			26.0	262H only	325.00
2350-12E	12	12.5			30.2		396.00



**2350-15X**

## 242H & 262H - BOR-MAX® SERIES NON-FLIGHTED AUGER EXTENSION

PART NUMBER	FLIGHTING OD (IN)	CUTTING DIA (IN)	EFFECTIVE DIGGING DEPTH (IN)	ROUND DRIVE CONNECTION (IN)	WEIGHT (LBS)	COMPATIBLE PRODUCT	MSRP \$
2350-15X	N/A	N/A	15	1	3.6	242H, 262H, All Bor-Max® Series Augers	115.00

► Includes auger pin.



**E244**



**E246**



**E248**



**E310**



**E512**

## 242H & 262H - BOR-MAX® SERIES AUGER BLADES

PART NUMBER	DESCRIPTION	WEIGHT (LBS)	COMPATIBLE PRODUCT	MSRP \$
E244PAK3	Earth blade for 4 inch diameter auger. Pack of 3.	0.2	2350-4E	44.79
E246PAK3	Earth blade for 6 inch diameter auger. Pack of 3.	0.2	2350-6E	47.41
E248PAK3	Earth blade for 8 inch diameter auger. Pack of 3.	0.4	2350-8E	51.90
E310PAK3	Earth blade for 10 inch diameter auger. Pack of 3.	0.4	2350-10E	59.54
E512PAK3	Earth blade for 12 inch diameter auger. Pack of 3.	0.5	2350-12E	65.40



**2121**

## 242H & 262H - BOR-MAX® SERIES AUGER PIN

PART NUMBER	DESCRIPTION	WEIGHT (LBS)	COMPATIBLE PRODUCT	MSRP \$
2121PAK3	Auger pin, .375 inch diameter. Pack of 3.	0.2	242H, 262H, All Bor-Max® Series Augers	24.86



**P302**



**P801**



**SB26**

## 242H & 262H - BOR-MAX® SERIES AUGER SCREW BITS

PART NUMBER	DESCRIPTION	WEIGHT (LBS)	COMPATIBLE PRODUCT	MSRP \$
P302PAK2	Auger screw bit, 3 inch auger diameter only. Pack of 2.	0.8	2350-3E	93.50
P801PAK3	Auger screw bit, 2 inch auger diameter only. Pack of 3.	1.0	2350-2E	75.64
SB26PAK3	Auger screw bit for all auger sizes except 2 and 3 inch diameter augers. Includes mounting bolt and nut. Pack of 3.	1.5	All other Bor-Max® Series auger sizes	74.26



**332H**



**348H**

## 332H & 348H EPIC® SERIES HAND-HELD HOLE DIGGERS

MODEL	DESCRIPTION	WEIGHT (LBS)	MSRP \$
332H	Hole Digger, 2 man, 5.5 HP, Honda® GXV160 gasoline engine, 4-stroke, 1.375 inch hexagon auger drive connection. Includes auger pin, less auger.	77.0	2,724.00
348H	Hole Digger, 2 man, 5.5 HP, Honda® GXV160 gasoline engine, 4-stroke, .875 inch square auger drive connection. Includes auger pin, less auger.	77.0	2,724.00

► Refer to pages 6 through 9 for related augers, auger extensions, couplers, pins, teeth and screw bits.



**4450-8E3**

## 332H - 4400 SERIES EARTH AUGERS

PART NUMBER	FLIGHTING OD (IN)	CUTTING DIA (IN)	EFFECTIVE DIGGING DEPTH (IN)	HEX DRIVE CONNECTION (IN)	WEIGHT (LBS)	COMPATIBLE PRODUCT	MSRP \$
4400-2E3*	2.25	2.5	36	.812	7.7	332H, 5500 Series Flighted & Non-Flighted Extensions, 4400 Series Couplers	283.00
4400-3E3*	3.25	3.5		1.125	13.6		304.00
4400-4E3	4	4.5		1.375	17.0		365.00
4450-6E3	6	7.5			23.0		403.00
4450-8E3	8	9.5			27.8		419.00
4450-10E3	10	11.5			34.8		439.00
4450-12E3	12	13.5			39.0		483.00
4400-14E3	14	15.5			48.6		581.00
4400-16E3	16	17.5			51.2		895.00
4400-18P**	18	19.5	30		32.0		839.00

\* Two and three inch diameter augers require a coupler. Contact factory for additional information.

\*\* Planting auger, 9 inch length flighting for shallow digging. Not available with full length flighting.



**5500-8X3**

## 332H - 5500 SERIES FLIGHTED EARTH AUGER EXTENSIONS

PART NUMBER	FLIGHTING OD (IN)	CUTTING DIA (IN)	EFFECTIVE DIGGING DEPTH (IN)	HEX DRIVE CONNECTION (IN)	WEIGHT (LBS)	COMPATIBLE PRODUCT	MSRP \$
5500-2X3	2.25	N/A	36	1.375	7.6	332H, 4400 Series Augers & Couplers	263.00
5500-3X3	3.25				13.8		289.00
5500-4X3	4				15.8		347.00
5500-6X3	6				20.8		363.00
5500-8X3	8				23.8		383.00
5500-10X3	10				26.8		407.00
5500-12X3	12				31.0		438.00

## 348H - PLDBH/PSD GROUND HOG® TYPE EARTH AUGERS

PART NUMBER	FLIGHTING OD (IN)	CUTTING DIA (IN)	EFFECTIVE DIGGING DEPTH (IN)	SQUARE DRIVE CONNECTION (IN)	WEIGHT (LBS)	COMPATIBLE PRODUCT ▶	MSRP \$
PSD4	4	4.5	36	.875	17.0	348H & PSD Ground Hog® Type Non-Flighted Extension	365.00
PLDBH6	6	7.5			23.0		403.00
PLDBH8	8	9.5			27.8		419.00
PLDBH10	10	11.5			34.8		439.00
PLDBH12	12	13.5			39.0		483.00
PSD14	14	15.5			48.6		581.00
PSD16	16	17.5	30		51.2		895.00
PSD18P**	18	19.5			32.0		839.00



**PLDBH8**

▶ For General® 348H Hole Digger with Ground Hog® .875 inch square auger drive connection, Ground Hog® models C71-5, D5, 99 and 1 M Series Earth Drills.

\*\* Planting auger, 9 inch length flighting for shallow digging. Not available with full length flighting.



**5500-15X**



**PSD-15X**

## 332H & 348H - NON-FLIGHTED AUGER EXTENSIONS

PART NUMBER	FLIGHTING OD (IN)	CUTTING DIA (IN)	EFFECTIVE DIGGING DEPTH (IN)	DRIVE CONNECTION (IN)	WEIGHT (LBS)	COMPATIBLE PRODUCT	MSRP \$
5500-15X	N/A	N/A	15	1.375 Hex	7.1	332H, 4400 Series Augers	143.00
PSD-15X				.875 Square	5.9	348H, PLDBH/PSD Ground Hog® Type Augers	143.00

▶ Extensions include auger pin.



**4400-2CLR**



**4400-3CLR**

## 332H - AUGER COUPLERS

PART NUMBER	DESCRIPTION	WEIGHT (LBS)	COMPATIBLE PRODUCT	MSRP \$
4400-2CLR	Coupler, 1.375 inch female hexagon to .812 inch male hexagon pin. For connecting 332H to 4400-2E3 auger and 5500-2X3 flighted auger extension.	3.3	4400-2E3 auger and 5500-2X3 auger extension	149.00
4400-3CLR	Coupler, 1.375 inch female hexagon to 1.125 inch male hexagon pin. For connecting 332H to 4400-3E3 auger and 5500-3X3 flighted auger extension.	4.0	4400-3E3 auger and 5500-3X3 auger extension	149.00

▶ Couplers are not for use in combination with 5500-15X non-flighted extension.



**2021**



**2121**

## 332H & 348H - AUGER PINS

PART NUMBER	DESCRIPTION	WEIGHT (LBS)	COMPATIBLE PRODUCT	MSRP \$
2021PAK3	Auger pin, .312 inch diameter. Pack of 3.	0.2	348H, PLDBH/PSD Ground Hog® Type Augers & Non-Flighted Extension	27.50
2121PAK3	Auger pin, .375 inch diameter. Pack of 3.	0.2	332H, 4400 Series Augers & Couplers, 5500 Series Flighted & Non-Flighted Extensions	24.86



**35**



**35HFC**



**5T30**



**5T30C**



**1336**

## 332H & 348H - AUGER TEETH

PART NUMBER	DESCRIPTION	WEIGHT (LBS)	COMPATIBLE PRODUCT	MSRP \$
35PAK7	Standard dirt tooth, thin cross section for fast penetration, wears sharp. For ordinary digging conditions. Can install in all boring head sockets. Includes RUB-R-LOK™. Pack of 7.	0.4	4400, PLDBH/PSD Series Augers	45.70
35HFCAK7	Hard-faced dirt tooth for substantially increased wear life over standard dirt tooth. For ordinary digging conditions. Can install in all boring head sockets with hardfacing up. Includes RUB-R-LOK™. Pack of 7.	0.4		57.26
5T30PAK3	Chisel dirt tooth. Rips through caliche, hardpan and other formations. For install in inside, boring head sockets only, rib side facing up. Not for use alone w/6 inch diameter auger. Includes RUB-R-LOK™. Pack of 3.	0.4		28.68
5T30CPAK3	Chisel dirt tooth w/Tungsten Carbide overlay. Rips through caliche, hardpan and other formations. For install in inside, boring head sockets only, rib side facing up. Not for use alone w/6 inch diameter auger. Includes RUB-R-LOK™. Pack of 3.	0.5		90.36
1336PAK2	Tungsten Carbide tooth. For use in extremely abrasive and frozen soil. Extended wear life over standard dirt tooth. Can install in all boring head sockets. Use in rocky soils may shatter inserts. Includes RUB-R-LOK™. Pack of 2.	0.6		62.61





**SB25**



**SB25C**



**SB26**



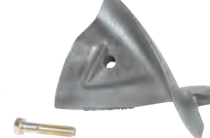
**SB26C**



**SB35**



**SB35C**



**SB45**



**SB45C**

## 332H & 348H - AUGER SCREW BITS

PART NUMBER	DESCRIPTION	WEIGHT (LBS)	COMPATIBLE PRODUCT	MSRP \$
SB25PAK3	Auger screw bit. For 2.25, 14, 16 and 18 inch diameter augers. Includes mounting bolt and nut. Pack of 3.	2.3	4400, PLDBH/ PSD Series Augers	60.87
SB25C	Auger screw bit w/Tungsten Carbide overlay for increased wear life. For 2.25, 14, 16 and 18 inch diameter augers. Includes mounting bolt and nut. Pack of 1.	0.8		61.96
SB26PAK3	Auger screw bit. For 6, 8, 10 and 12 inch diameter augers. Includes mounting bolt and nut. Pack of 3.	4.2		74.26
SB26C	Auger screw bit w/Tungsten Carbide overlay for increased wear life. For 6, 8, 10 and 12 inch diameter augers. Includes mounting bolt and nut. Pack of 1.	1.5		61.96
SB35	Auger screw bit. For 3.25 inch diameter auger. Includes mounting bolt and nut. Pack of 1.	1.8	4400 Series Augers	50.64
SB35C	Auger screw bit w/Tungsten Carbide overlay for increased wear life. For 3.25 inch diameter auger. Includes mounting bolt and nut. Pack of 1.	1.8		101.13
SB45	Auger screw bit. For 4 inch diameter auger. Includes mounting bolt and nut. Pack of 1.	3.1	4400, PLDBH/ PSD Series Augers	88.96
SB45C	Auger screw bit w/Tungsten Carbide overlay for increased wear life. For 4 inch diameter auger. Includes mounting bolt and nut. Pack of 1.	3.5		147.63

► All screw bits have thin cross section for fast penetration in most soils.



**660H**

660H DIG-R-MOBILE® TOWABLE HOLE DIGGER			
MODEL	DESCRIPTION	WEIGHT (LBS)	MSRP \$
660H	Hole Digger, 1 man, 13 HP, Honda® GX390 gasoline engine, 4-stroke. Includes auger pin and coupler, less auger. Specify coupler choice from page 11.	560.0	7,875.00

► Refer to pages 10 through 13 for related augers, auger extensions, couplers, pins, teeth and screw bits.



**4450-8E3**

660H - 4400 SERIES EARTH AUGERS							
PART NUMBER	FLIGHTING OD (IN)	CUTTING DIA (IN)	EFFECTIVE DIGGING DEPTH (IN)	HEX DRIVE CONNECTION (IN)	WEIGHT (LBS)	COMPATIBLE PRODUCT	MSRP \$
4400-4E3	4	4.5	36	1.375	17.0	660H, 5500 Series Flighted & Non-Flighted Extensions, 660H Series Couplers	365.00
4450-6E3	6	7.5			23.0		403.00
4450-8E3	8	9.5			27.8		419.00
4450-10E3	10	11.5			34.8		439.00
4450-12E3	12	13.5			39.0		483.00
4400-14E3	14	15.5			48.6		581.00
4400-16E3	16	17.5	30		51.2		895.00
4400-18P**	18	19.5			32.0		839.00

\*\* Planting auger, 9 inch length flighting for shallow digging. Not available with full length flighting.



**5500-8X3**

660H - 5500 SERIES FLIGHTED EARTH AUGER EXTENSIONS							
PART NUMBER	FLIGHTING OD (IN)	CUTTING DIA (IN)	EFFECTIVE DIGGING DEPTH (IN)	HEX DRIVE CONNECTION (IN)	WEIGHT (LBS)	COMPATIBLE PRODUCT	MSRP \$
5500-4X3	4	N/A	36	1.375	15.8	660H, 4400 Series Augers & Couplers	347.00
5500-6X3	6				20.8		363.00
5500-8X3	8				23.8		383.00
5500-10X3	10				26.8		407.00
5500-12X3	12				31.0		438.00

660H - PLDBH/PSD GROUND HOG® TYPE EARTH AUGERS							
PART NUMBER	FLIGHTING OD (IN)	CUTTING DIA (IN)	EFFECTIVE DIGGING DEPTH (IN)	SQUARE DRIVE CONNECTION (IN)	WEIGHT (LBS)	COMPATIBLE PRODUCT ▶	MSRP \$
PSD4	4	4.5	36	.875	17.0	660H & PSD Ground Hog® Type Non-Flighted Extension	365.00
PLDBH6	6	7.5			23.0		403.00
PLDBH8	8	9.5			27.8		419.00
PLDBH10	10	11.5			34.8		439.00
PLDBH12	12	13.5			39.0		483.00
PSD14	14	15.5			48.6		581.00
PSD16	16	17.5	30		51.2		895.00
PSD18P**	18	19.5			32.0		839.00



**PLDBH8**

▶ For General® 348H Hole Digger with Ground Hog® .875 inch square auger drive connection, Ground Hog® models C71-5, D5, 99 and 1 M Series Earth Drills.

\*\* Planting auger, 9 inch length flighting for shallow digging. Not available with full length flighting.



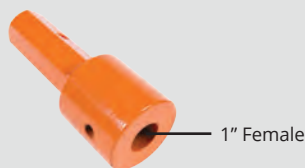
**5500-15X**



**PSD-15X**

660H - NON-FLIGHTED AUGER EXTENSIONS							
PART NUMBER	FLIGHTING OD (IN)	CUTTING DIA (IN)	EFFECTIVE DIGGING DEPTH (IN)	DRIVE CONNECTION (IN)	WEIGHT (LBS)	COMPATIBLE PRODUCT	MSRP \$
5500-15X	N/A	N/A	15	1.375 Hex	7.1	660H, 4400 Series Augers	143.00
PSD-15X				.875 Square	5.9	660H, PLDBH/PSD Ground Hog® Type Augers	143.00

▶ Extensions include auger pin.



**660-5CLR**



**660-6CLR**

660H - AUGER COUPLERS				
PART NUMBER	DESCRIPTION	WEIGHT (LBS)	COMPATIBLE PRODUCT	MSRP \$
660-5CLR	Coupler, 1 inch female round to 1.375 inch male hexagon pin.	5.0	660H, 4400 Series Augers, 5500 Series Flighted & Non-Flighted Extensions	149.00
660-6CLR	Coupler, 1 inch female round to .875 inch male square (Ground Hog® type) pin.	3.7	660H, PDLBH/PSD Series Augers & Non-Flighted Extension	149.00



**2021**



**2121**

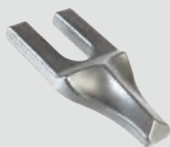
660H - AUGER PINS				
PART NUMBER	DESCRIPTION	WEIGHT (LBS)	COMPATIBLE PRODUCT	MSRP \$
2021PAK3	Auger pin, .312 inch diameter. Pack of 3.	0.2	660H, PLDBH/PSD Ground Hog® Type Augers & Non-Flighted Extension	27.50
2121PAK3	Auger pin, .375 inch diameter. Pack of 3.	0.2	660H, 4400 Series Augers, 5500 Series Flighted & Non-Flighted Extensions, 660H Series Couplers	24.86



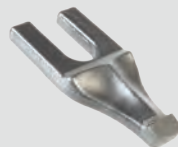
**35**



**35HFC**



**5T30**



**5T30C**



**1336**

660H - AUGER TEETH				
PART NUMBER	DESCRIPTION	WEIGHT (LBS)	COMPATIBLE PRODUCT	MSRP \$
35PAK7	Standard dirt tooth, thin cross section for fast penetration, wears sharp. For ordinary digging conditions. Can install in all boring head sockets. Includes RUB-R-LOK™. Pack of 7.	0.4	4400, PLDBH/PSD Series Augers	45.70
35HFCAK7	Hard-faced dirt tooth for substantially increased wear life over standard dirt tooth. For ordinary digging conditions. Can install in all boring head sockets with hardfacing up. Includes RUB-R-LOK™. Pack of 7.	0.4		57.26
5T30PAK3	Chisel dirt tooth. Rips through caliche, hardpan and other formations. For install in inside, boring head sockets only, rib side facing up. Not for use alone w/6 inch diameter auger. Includes RUB-R-LOK™. Pack of 3.	0.4		28.68
5T30CPAK3	Chisel dirt tooth w/Tungsten Carbide overlay. Rips through caliche, hardpan and other formations. For install in inside, boring head sockets only, rib side facing up. Not for use alone w/6 inch diameter auger. Includes RUB-R-LOK™. Pack of 3.	0.5		90.36
1336PAK2	Tungsten Carbide tooth. For use in extremely abrasive and frozen soil. Extended wear life over standard dirt tooth. Can install in all boring head sockets. Use in rocky soils may shatter inserts. Includes RUB-R-LOK™. Pack of 2.	0.6		62.61





**SB25**



**SB25C**



**SB26**



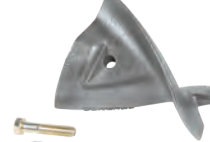
**SB26C**



**SB35**



**SB35C**



**SB45**



**SB45C**

660H - AUGER SCREW BITS				
PART NUMBER	DESCRIPTION	WEIGHT (LBS)	COMPATIBLE PRODUCT	MSRP \$
SB25PAK3	Auger screw bit. For 2.25, 14, 16 and 18 inch diameter augers. Includes mounting bolt and nut. Pack of 3.	2.3	4400, PLDBH/ PSD Series Augers	60.87
SB25C	Auger screw bit w/Tungsten Carbide overlay for increased wear life. For 2.25, 14, 16 and 18 inch diameter augers. Includes mounting bolt and nut. Pack of 1.	0.8		61.96
SB26PAK3	Auger screw bit. For 6, 8, 10 and 12 inch diameter augers. Includes mounting bolt and nut. Pack of 3.	4.2		74.26
SB26C	Auger screw bit w/Tungsten Carbide overlay for increased wear life. For 6, 8, 10 and 12 inch diameter augers. Includes mounting bolt and nut. Pack of 1.	1.5		61.96
SB35	Auger screw bit. For 3.25 inch diameter auger. Includes mounting bolt and nut. Pack of 1.	1.8	4400 Series Augers	50.64
SB35C	Auger screw bit w/Tungsten Carbide overlay for increased wear life. For 3.25 inch diameter auger. Includes mounting bolt and nut. Pack of 1.	1.8		101.13
SB45	Auger screw bit. For 4 inch diameter auger. Includes mounting bolt and nut. Pack of 1.	3.1	4400, PLDBH/ PSD Series Augers	88.96
SB45C	Auger screw bit w/Tungsten Carbide overlay for increased wear life. For 4 inch diameter auger. Includes mounting bolt and nut. Pack of 1.	3.5		147.63

► All screw bits have thin cross section for fast penetration in most soils.



**471-12**



**471-20**



**553-12**



**553-20**

## 471/553 DIG-R-TACH® SERIES HYDRAULIC ATTACHMENT HOLE DIGGERS

MODEL	DESCRIPTION	WEIGHT (LBS)	MSRP \$
471-12	Hole Digger, flow: 5.0-10.0 GPM (18.9-37.9 lit/min); pressure range: 1500-3000 PSI. 426 ft. lbs max drilling torque@ 3000 PSI. 2 inch hexagon auger drive connection. Includes auger bolt.	81.6	2,410.00
471-20	Hole Digger, flow: 7.0-12.0 GPM (26.5-45.4 lit/min); pressure range: 1500-3000 PSI. 731 ft. lbs max drilling torque@ 3000 PSI. 2 inch hexagon auger drive connection. Includes auger bolt.	81.6	2,625.00
553-12	Hole Digger, flow: 5.0-10.0 GPM (18.9-37.9 lit/min); pressure range: 1500-3000 PSI. 426 ft. lbs max drilling torque@ 3000 PSI. 2.562 inch round auger drive connection. Includes auger drive pin.	81.6	2,410.00
553-20	Hole Digger, flow: 7.0-12.0 GPM (26.5-45.4 lit/min); pressure range: 1500-3000 PSI. 731 ft. lbs max drilling torque@ 3000 PSI. 2.562 inch round auger drive connection. Includes auger drive pin.	81.6	2,625.00

- ▶ All 471 and 553 hole digger models **less** hydraulic quick couplers, hose kit, mounting frame and auger.
- ▶ Refer to pages 14 through 21 for related mounting frames, augers, auger extensions, pins, teeth and screw bits.



**471-1100A**



**471-1105A**



**471-1200A**



**471-1300A**

## 471/553 DIG-R-TACH® - MOUNTING FRAMES

PART NUMBER	DESCRIPTION	WEIGHT (LBS)	COMPATIBLE PRODUCT	MSRP \$
471-1100A	Mounting frame for 500 Series Bobcat® loaders equipped with standard Bob-Tach® System and compact tractor backhoe loaders utilizing the Bobcat® "universal" type mounting frame design.	146.0	All 471/553 Models	743.00
471-1105A	Mounting frame for 400 Series Bobcat® loaders equipped with standard Bob-Tach® System. Not for use with 453 Bobcat® loader.	146.0		743.00
471-1200A	Mounting frame for Toro Dingo®, Ramrod® and Finn® compact mini loaders (two pin vertical).	85.0		743.00
471-1300A	Mounting frame for Kanga® and Ariens® compact mini loaders (two pin horizontal).	91.0		743.00

## 471 DIG-R-TACH® - 4710 SERIES EARTH AUGERS

PART NUMBER	FLIGHTING OD (IN)	CUTTING DIA (IN)	EFFECTIVE DIGGING DEPTH (IN)	HEX DRIVE CONNECTION (IN)	WEIGHT (LBS)	COMPATIBLE PRODUCT	MSRP \$
4710-6E3	6	7.5	36	2	51.6	All 471 Models, 6700 Non-Flighted Extensions, 6700-2CLR Coupler	536.00
4710-8E3	8	9.5			58.0		597.00
4710-10E3	10	11.5			65.0		940.00
4710-12E3	12	13.5			73.0		979.00
4710-16E3	16	17.5			88.0		1,076.00
4710-18E3	18	19.5			103.0		1,313.00
4710-24E3	24	25.5			119.0		1,442.00
4710-30E3	30	31.5			130.0		1,468.00
4710-36E3	36	37.5			140.0		1,920.00



**4710-8E3**

- Augers can be used with popular competitive hydraulically powered earth drilling attachments utilizing 2 inch hexagon auger drive connection.

## 553 DIG-R-TACH® - 4750 SERIES EARTH AUGERS

PART NUMBER	FLIGHTING OD (IN)	CUTTING DIA (IN)	EFFECTIVE DIGGING DEPTH (IN)	ROUND DRIVE CONNECTION (IN)	WEIGHT (LBS)	COMPATIBLE PRODUCT	MSRP \$
4750-6E3	6	7.5	36	2.562	51.6	All 553 Models, 6780 Non-Flighted Extensions, 6700-4CLR Coupler	536.00
4750-8E3	8	9.5			58.0		597.00
4750-10E3	10	11.5			65.0		940.00
4750-12E3	12	13.5			73.0		979.00
4750-16E3	16	17.5			88.0		1,076.00
4750-18E3	18	19.5			103.0		1,313.00
4750-24E3	24	25.5			119.0		1,442.00
4750-30E3	30	31.5			130.0		1,468.00
4750-36E3	36	37.5			140.0		1,920.00



**4750-8E3**

- Augers can be used with popular competitive hydraulically powered earth drilling attachments utilizing 2.562 inch round auger drive connection.



**6700-15X**



**6700-36X**

471 DIG-R-TACH® - NON-FLIGHTED AUGER EXTENSIONS							
PART NUMBER	FLIGHTING OD (IN)	CUTTING DIA (IN)	EFFECTIVE DIGGING DEPTH (IN)	HEX DRIVE CONNECTION (IN)	WEIGHT (LBS)	COMPATIBLE PRODUCT	MSRP \$
6700-15X	N/A	N/A	15	2	23.5	All 471 Models, 4710 Series Augers	395.00
6700-36X			36		36.5		395.00



**6780-15X**



**6780-36X**

553 DIG-R-TACH® - NON-FLIGHTED AUGER EXTENSIONS							
PART NUMBER	FLIGHTING OD (IN)	CUTTING DIA (IN)	EFFECTIVE DIGGING DEPTH (IN)	ROUND DRIVE CONNECTION (IN)	WEIGHT (LBS)	COMPATIBLE PRODUCT	MSRP \$
6780-15X	N/A	N/A	15	2.562	25.3	All 553 Models, 4750 Series Augers	395.00
6780-36X			36		38.0		395.00

► Extensions include auger pin.



**6700-2CLR**



**6700-4CLR**

471/553 DIG-R-TACH® - COUPLERS				
PART NUMBER	DESCRIPTION	WEIGHT (LBS)	COMPATIBLE PRODUCT	MSRP \$
6700-2CLR	Coupler adapts hydraulic powered attachments with 2.562 inch male round driveshaft and .875 inch diameter auger pin (General®, Lowe®, McMillen®, Pengo®, Bobcat®, etc.) to augers with 2 inch female hexagon drive hub.	17.8	All 553 Models, 4710 Series Augers	303.00
6700-4CLR	Coupler adapts hydraulic attachments with 2 inch male hexagon driveshaft to augers with 2.562 inch female round auger hub (General®, Lowe®, McMillen®, Pengo®, Bobcat®, etc.) and .875 inch diameter drive pin.	19.7	All 471 Models, 4750 Series Augers	303.00





**35**



**35HFC**



**5T30**



**5T30C**



**1336**

471/553 DIG-R-TACH® - AUGER TEETH				
PART NUMBER	DESCRIPTION	WEIGHT (LBS)	COMPATIBLE PRODUCT	MSRP \$
35PAK7	Standard dirt tooth, thin cross section for fast penetration, wears sharp. For ordinary digging conditions. Can install in all boring head sockets. Includes RUB-R-LOK™. Pack of 7.	0.4	4710, 4750 Series Augers	45.70
35HFCPAK7	Hard-faced dirt tooth for substantially increased wear life over standard dirt tooth. For ordinary digging conditions. Can install in all boring head sockets with hardfacing up. Includes RUB-R-LOK™. Pack of 7.	0.4		57.26
5T30PAK3	Chisel dirt tooth. Rips through caliche, hardpan and other formations. For install in inside, boring head sockets only, rib side facing up. Not for use alone w/6 inch diameter auger. Includes RUB-R-LOK™. Pack of 3.	0.4		28.68
5T30CPAK3	Chisel dirt tooth w/Tungsten Carbide overlay. Rips through caliche, hardpan and other formations. For install in inside, boring head sockets only, rib side facing up. Not for use alone w/6 inch diameter auger. Includes RUB-R-LOK™. Pack of 3.	0.5		90.36
1336PAK2	Tungsten Carbide tooth. For use in extremely abrasive and frozen soil. Extended wear life over standard dirt tooth. Can install in all boring head sockets. Use in rocky soils may shatter inserts. Includes RUB-R-LOK™. Pack of 2.	0.6		62.61



**SB35**



**SB35C**

471/553 DIG-R-TACH® - AUGER SCREW BITS				
PART NUMBER	DESCRIPTION	WEIGHT (LBS)	COMPATIBLE PRODUCT	MSRP \$
SB35	Auger screw bit. Includes mounting bolt and nut. Pack of 1.	1.8	4710, 4750 Series Augers	50.64
SB35C	Auger screw bit w/Tungsten Carbide overlay for increased wear life. Includes mounting bolt and nut. Pack of 1.	1.8		101.13

► All screw bits have thin cross section for fast penetration in most soils.



671-16



753-16

671/753 DIG-R-TACH® SERIES HYDRAULIC ATTACHMENT HOLE DIGGERS			
MODEL	DESCRIPTION	WEIGHT (LBS)	MSRP \$
671-16	Hole Digger, flow: Up to 25.0 GPM (8 lit/min); pressure range: 1500-3000 PSI. 1330 ft. lbs max drilling torque@ 2500 PSI. 2 inch hexagon auger drive connection. Includes auger bolt.	250.0	2,789.00
753-16	Hole Digger, flow: Up to 25.0 GPM (8 lit/min); pressure range: 1500-3000 PSI. 1330 ft. lbs max drilling torque@ 2500 PSI. 2.562 inch round auger drive connection. Includes auger pin.		2,789.00

- ▶ All 671 and 753 hole digger models **less** hydraulic quick couplers, hose kit, mounting frame and auger.
- ▶ Refer to pages 18 through 23 for related mounting frames, augers and auger couplers.



671-1100

671/753 DIG-R-TACH® - MOUNTING FRAME				
PART NUMBER	DESCRIPTION	WEIGHT (LBS)	COMPATIBLE PRODUCT	MSRP \$
671-1100	Mounting frame for all skid loaders utilizing Bobcat® type bucket attachment system.	222.0	All 671/753 Models	835.00 NET

- ▶ Consult factory for skid loader and backhoe mounting brackets not depicted. Confirm backhoe brand, model plus dipperstick width and pin diameter dimensions.

## 671 DIG-R-TACH® - 6710 SERIES EARTH AUGERS

PART NUMBER	FLIGHTING OD (IN)	CUTTING DIA (IN)	EFFECTIVE DIGGING DEPTH (IN)	HEX DRIVE CONNECTION (IN)	WEIGHT (LBS)	COMPATIBLE PRODUCT	MSRP \$
6710-6PE4	6	7.5	48	2	53.0	671-16, 6700 Non-Flighted Extensions, 6700-2CLR Coupler	998.00
6710-6PE5	6	7.5	60		78.0		1,164.00
6710-9PE4	8	9.5	48		77.0		1,164.00
6710-9PE5	8	9.5	60		106.0		1,294.00
6710-12PE4	12	13.5	48		113.0		1,224.00
6710-12PE5	12	13.5	60		131.0		1,424.00
6710-16PE4	16	17.5	48		144.0		1,603.00
6710-16PE5	16	17.5	60		160.0		1,728.00
6710-18PE4	18	19.5	48		171.0		1,728.00
6710-18PE5	18	19.5	60		207.0		1,919.00
6710-24PE4	24	25.5	48		261.0		2,732.00
6710-24PE5	24	25.5	60		282.0		3,206.00
6710-30PE4	30	31.5	48		313.0		3,777.00
6710-30PE5	30	31.5	60		403.0		4,049.00
6710-36PE4	36	37.5	48		420.3		4,218.00
6710-36PE5	36	37.5	60		546.3		4,619.00



**6710-9PE4**

## 753 DIG-R-TACH® - 6750 SERIES EARTH AUGERS

PART NUMBER	FLIGHTING OD (IN)	CUTTING DIA (IN)	EFFECTIVE DIGGING DEPTH (IN)	ROUND DRIVE CONNECTION (IN)	WEIGHT (LBS)	COMPATIBLE PRODUCT	MSRP \$
6750-6PE4	6	7.5	48	2.562	53.0	753-16, 6780 Non-Flighted Extensions, 6700-4CLR Coupler	998.00
6750-6PE5	6	7.5	60		78.0		1,164.00
6750-9PE4	8	9.5	48		77.0		1,164.00
6750-9PE5	8	9.5	60		106.0		1,294.00
6750-12PE4	12	13.5	48		113.0		1,224.00
6750-12PE5	12	13.5	60		131.0		1,424.00
6750-16PE4	16	17.5	48		144.0		1,603.00
6750-16PE5	16	17.5	60		160.0		1,728.00
6750-18PE4	18	19.5	48		171.0		1,728.00
6750-18PE5	18	19.5	60		207.0		1,919.00
6750-24PE4	24	25.5	48		261.0		2,732.00
6750-24PE5	24	25.5	60		282.0		3,206.00
6750-30PE4	30	31.5	48		313.0		3,777.00
6750-30PE5	30	31.5	60		403.0		4,049.00
6750-36PE4	36	37.5	48		420.3		4,218.00
6750-36PE5	36	37.5	60		546.3		4,619.00



**6750-9PE4**



**6700-15X**



**6700-36X**

### 671 DIG-R-TACH® - NON-FLIGHTED AUGER EXTENSIONS

PART NUMBER	FLIGHTING OD (IN)	CUTTING DIA (IN)	EFFECTIVE DIGGING DEPTH (IN)	HEX DRIVE CONNECTION (IN)	WEIGHT (LBS)	COMPATIBLE PRODUCT	MSRP \$
6700-15X	N/A	N/A	15	2	23.5	671-16, 6710 Series Augers	395.00
6700-36X			36		36.5		395.00



**6780-15X**



**6780-36X**

### 753 DIG-R-TACH® - NON-FLIGHTED AUGER EXTENSIONS

PART NUMBER	FLIGHTING OD (IN)	CUTTING DIA (IN)	EFFECTIVE DIGGING DEPTH (IN)	ROUND DRIVE CONNECTION (IN)	WEIGHT (LBS)	COMPATIBLE PRODUCT	MSRP \$
6780-15X	N/A	N/A	15	2.562	25.3	753-16, 6750 Series Augers	395.00
6780-36X			36		38.0		395.00

► Extensions include auger pin.



**6700-2CLR**



**6700-4CLR**

### 671/753 DIG-R-TACH® - COUPLERS

PART NUMBER	DESCRIPTION	WEIGHT (LBS)	COMPATIBLE PRODUCT	MSRP \$
6700-2CLR	Coupler adapts hydraulic powered attachments with 2.562 inch male round driveshaft and .875 inch diameter auger pin (General®, Lowe®, McMillen®, Pengo®, Bobcat®, etc.) to augers with 2 inch female hexagon drive hub.	17.8	753-16, 6710 Series Augers	303.00
6700-4CLR	Coupler adapts hydraulic attachments with 2 inch male hexagon driveshaft to augers with 2.562 inch female round auger hub (General®, Lowe®, McMillen®, Pengo®, Bobcat®, etc.) and .875 inch diameter drive pin.	19.7	671-16, 6750 Series Augers	303.00

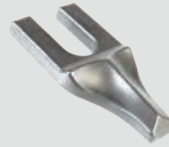




**35**



**35HFC**



**5T30**



**5T30C**



**1336**

671/753 DIG-R-TACH® - AUGER TEETH				
PART NUMBER	DESCRIPTION	WEIGHT (LBS)	COMPATIBLE PRODUCT	MSRP \$
35PAK7	Standard dirt tooth, thin cross section for fast penetration, wears sharp. For ordinary digging conditions. Can install in all boring head sockets. Includes RUB-R-LOK™. Pack of 7.	0.4	6710, 6750 Series Augers	45.70
35HFCPAK7	Hard-faced dirt tooth for substantially increased wear life over standard dirt tooth. For ordinary digging conditions. Can install in all boring head sockets with hardfacing up. Includes RUB-R-LOK™. Pack of 7.	0.4		57.26
5T30PAK3	Chisel dirt tooth. Rips through caliche, hardpan and other formations. For install in inside, boring head sockets only, rib side facing up. Not for use alone w/6 inch diameter auger. Includes RUB-R-LOK™. Pack of 3.	0.4		28.68
5T30CPAK3	Chisel dirt tooth w/Tungsten Carbide overlay. Rips through caliche, hardpan and other formations. For install in inside, boring head sockets only, rib side facing up. Not for use alone w/6 inch diameter auger. Includes RUB-R-LOK™. Pack of 3.	0.5		90.36
1336PAK2	Tungsten Carbide tooth. For use in extremely abrasive and frozen soil. Extended wear life over standard dirt tooth. Can install in all boring head sockets. Use in rocky soils may shatter inserts. Includes RUB-R-LOK™. Pack of 2.	0.6		62.61



**SB35**



**SB35C**

671/753 DIG-R-TACH® - AUGER SCREW BITS				
PART NUMBER	DESCRIPTION	WEIGHT (LBS)	COMPATIBLE PRODUCT	MSRP \$
SB35	Auger screw bit. Includes mounting bolt and nut. Pack of 1.	1.8	6710, 6750 Series Augers	50.64
SB35C	Auger screw bit w/Tungsten Carbide overlay for increased wear life. Includes mounting bolt and nut. Pack of 1.	1.8		101.13

► All screw bits have thin cross section for fast penetration in most soils.



**TCT12-200H-36**

671 DIG-R-TACH® - TCT SERIES EARTH AUGERS							
PART NUMBER	FLIGHTING OD (IN)	CUTTING DIA (IN)	EFFECTIVE DIGGING DEPTH (IN)	HEX DRIVE CONNECTION (IN)	WEIGHT (LBS)	COMPATIBLE PRODUCT	MSRP \$
TCT6-200H-36	6	7.5	36	2	65.0	671-16, 6700 Non-Flighted Extensions, 6700-2CLR Coupler	1,695.00
TCT6-200H-48	6	7.5	48		80.0		1,875.00
TCT6-200H-60	6	7.5	60		95.0		2,095.00
TCT9-200H-36	8	10.5	36		75.0		2,275.00
TCT9-200H-48	8	10.5	48		90.0		2,560.00
TCT9-200H-60	8	10.5	60		105.0		2,795.00
TCT12-200H-36	12	13.5	36		102.0		2,195.00
TCT12-200H-48	12	13.5	48		118.0		2,349.00
TCT12-200H-60	12	13.5	60		148.0		2,595.00
TCT18-200H-36	18	19.5	36		150.0		2,645.00
TCT18-200H-48	18	19.5	48		170.0		2,950.00
TCT18-200H-60	18	19.5	60		190.0		3,250.00
TCT24-200H-36	24	25.5	36		240.0		2,775.00
TCT24-200H-48	24	25.5	48		270.0		3,080.00
TCT24-200H-60	24	25.5	60		300.0		3,380.00

► Standard flighting is .375 thick. Optional .500 thick flighting is available.



**TCT12-256RD-36**

753 DIG-R-TACH® - TCT SERIES AUGERS							
PART NUMBER	FLIGHTING OD (IN)	CUTTING DIA (IN)	EFFECTIVE DIGGING DEPTH (IN)	ROUND DRIVE CONNECTION (IN)	WEIGHT (LBS)	COMPATIBLE PRODUCT	MSRP \$
TCT6-256RD-36	6	7.5	36	2.562	65.0	753-16, 6780 Non-Flighted Extensions, 6700-4CLR Coupler	1,695.00
TCT6-256RD-48	6	7.5	48		80.0		1,875.00
TCT6-256RD-60	6	7.5	60		95.0		2,095.00
TCT9-256RD-36	8	10.5	36		75.0		2,275.00
TCT9-256RD-48	8	10.5	48		90.0		2,560.00
TCT9-256RD-60	8	10.5	60		105.0		2,795.00
TCT12-256RD-36	12	13.5	36		102.0		2,195.00
TCT12-256RD-48	12	13.5	48		118.0		2,349.00
TCT12-256RD-60	12	13.5	60		148.0		2,595.00
TCT18-256RD-36	18	19.5	36		150.0		2,645.00
TCT18-256RD-48	18	19.5	48		170.0		2,950.00
TCT18-256RD-60	18	19.5	60		190.0		3,250.00
TCT24-256RD-36	24	25.5	36		240.0		2,775.00
TCT24-256RD-48	24	25.5	48		270.0		3,080.00
TCT24-256RD-60	24	25.5	60		300.0		3,380.00

► Standard flighting is .375 thick. Optional .500 thick flighting is available.



**6700-15X**



**6700-36X**

## 671 DIG-R-TACH® - NON-FLIGHTED AUGER EXTENSIONS

PART NUMBER	FLIGHTING OD (IN)	CUTTING DIA (IN)	EFFECTIVE DIGGING DEPTH (IN)	HEX DRIVE CONNECTION (IN)	WEIGHT (LBS)	COMPATIBLE PRODUCT	MSRP \$
6700-15X	N/A	N/A	15	2	23.5	671-16, TCT 200H Series Augers	395.00
6700-36X			36		36.5		395.00



**6780-15X**



**6780-36X**

## 753 DIG-R-TACH® - NON-FLIGHTED AUGER EXTENSIONS

PART NUMBER	FLIGHTING OD (IN)	CUTTING DIA (IN)	EFFECTIVE DIGGING DEPTH (IN)	ROUND DRIVE CONNECTION (IN)	WEIGHT (LBS)	COMPATIBLE PRODUCT	MSRP \$
6780-15X	N/A	N/A	15	2.562	25.3	753-16, TCT 256RD Series Augers	395.00
6780-36X			36		38.0		395.00

► Extensions include auger pin.



**6700-2CLR**



**6700-4CLR**

## 671/753 DIG-R-TACH® - COUPLERS

PART NUMBER	DESCRIPTION	WEIGHT (LBS)	COMPATIBLE PRODUCT	MSRP \$
6700-2CLR	Coupler adapts hydraulic powered attachments with 2.562 inch male round driveshaft and .875 inch diameter auger pin (General®, Lowe®, McMillen®, Pengo®, Bobcat®, etc.) to augers with 2 inch female hexagon drive hub.	17.8	753-16, TCT 200H Series Augers	303.00
6700-4CLR	Coupler adapts hydraulic attachments with 2 inch male hexagon driveshaft to augers with 2.562 inch female round auger hub (General®, Lowe®, McMillen®, Pengo®, Bobcat®, etc.) and .875 inch diameter drive pin.	19.7	671-16, TCT 256RD Series Augers	303.00



**FCS5AC**



**FCS10GEN2**



**FCS16GEN3**



**FCS18**

RIP-R-STRIPPER® SERIES FLOOR COVERING STRIPPERS (FOR SOFT MATERIALS) ▶			
MODEL	DESCRIPTION	WEIGHT (LBS)	MSRP \$
FCS5AC	Floor Covering Stripper, 1400W, 115 VAC, 60 HZ electric motor, hand-held. Includes blade, manually propelled.	9.7	1,204.00
FCS10GEN2	Floor Covering Stripper, 2300W, 115 VAC, 60 HZ electric motor. Includes blade kit, manually propelled.	44.0	1,995.00
FCS16GEN3	Floor Covering Stripper, .75 HP, 115 VAC, 60 HZ electric motor. Includes 37 foot extension cord w/GFI and blade kit, manually propelled.	137.2	2,775.00
FCS18	Floor Covering Stripper, .75 HP 115 VAC, 60 HZ electric motor drive motor, .33 HP, 230 VAC, 50 HZ electric blade motor. Includes 50 foot extension cord and blade kit, self-propelled.	220.0	11,995.00

- ▶ All models are designed for removal of soft type floor coverings such as glued down carpet, VCT, linoleum, mastics and adhesives. These models are not intended for removal of ceramic tile, hardwood floors or other similar materials.
- ▶ Refer to pages 24 and 25 for related extension cord and blade attachments.



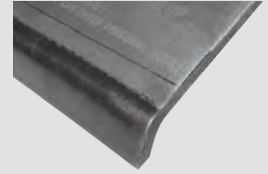
**FCS16-1000A**

FCS16GEN3 RIP-R-STRIPPER® - EXTENSION CORD				
PART NUMBER	DESCRIPTION	WEIGHT (LBS)	COMPATIBLE PRODUCT	MSRP \$
FCS16-1000A	Extension cord, 12-3 AWG, 37 foot length with integral GFI. Pack of 1.	5.6	FCS16GEN3	248.00

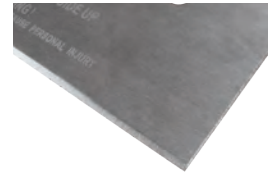


RIP-R-STRIPPER® SERIES - BLADES				
PART NUMBER	DESCRIPTION	WEIGHT (LBS)	COMPATIBLE PRODUCT	MSRP \$
FCS5-1500	Blade, scoring, 5 inch wide. For removing carpet, linoleum and VCT from wood and concrete surfaces. Pack of 1.	0.2	FCS5AC Only	13.00
FCS16-1050PAK2	Blade, scoring, 3 inch wide. For removing high bond strength materials from concrete floors ONLY. Pack of 2.	0.5	FCS10GEN2, FCS16GEN3	42.92
FCS16-1100PAK3	Blade, straight, 6 inch wide. For removing VCT type materials from concrete floors bevel up/ from wood floors bevel down. Pack of 3.	0.5		64.35
FCS16-1200PAK2	Blade, angled, 6 inch wide. For removing mastics from concrete floors ONLY. Pack of 2.	1.4		82.47
FCS16-1300PAK3	Blade, straight, 10 inch wide. For removing VCT type materials from concrete floors bevel up/ from wood floors bevel down. Pack of 3.	0.7		64.35
FCS16-1500PAK2	Blade, scoring, 8 inch wide. For removing glued carpet, sheet linoleum, rubber and PVC type materials from concrete floors ONLY. Pack of 2.	0.7		71.28
FCS16-1600PAK2	Blade, scoring, 8 inch wide. For removing glued carpet, sheet linoleum, rubber and PVC type materials from wood floors ONLY. Pack of 2.	0.7		71.28
FCS18-2000PAK3	Blade, straight, 6 inch wide. For removing VCT type materials from concrete floors ONLY. Pack of 3.	0.5	FCS18 Only	64.65
FCS18-2100PAK3	Blade, straight, 11 inch wide. For removing VCT type materials from concrete floors ONLY. Pack of 3.	0.6		64.65
FCS18-2200PAK2	Blade, scoring, 9 inch wide. For removing glued carpet, sheet linoleum, rubber and PVC type materials from concrete floors ONLY. Pack of 2.	0.6		64.76
FCS18-2400PAK2	Blade, straight, 18 inch wide. For removing VCT type materials from concrete floors ONLY. Includes blade reinforcement. Pack of 2.	1.5		74.83

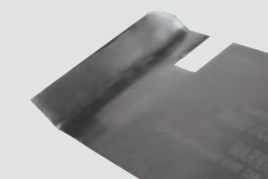
*Angled Blade*



*Straight Blade*



*Scoring Blade*



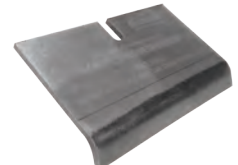
**FCS5-1500**



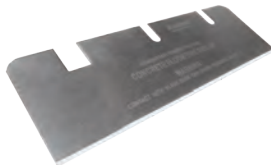
**FCS16-1050**



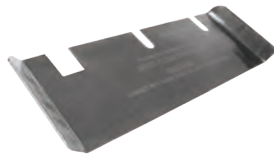
**FCS16-1100**



**FCS16-1200**



**FCS16-1300**



**FCS16-1500**



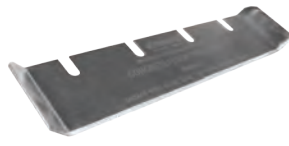
**FCS16-1600**



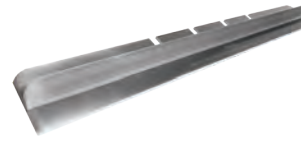
**FCS18-2000**



**FCS18-2100**



**FCS18-2200**



**FCS18-2400**



**CTS10**



**CTS12  
GEN2**

## RIP-R-STRIPPER® SERIES FLOOR COVERING STRIPPERS (FOR HARD MATERIALS) ▶

MODEL	DESCRIPTION	WEIGHT (LBS)	MSRP \$
CTS10	Floor Covering Stripper, 5-position breaker/tool angle adjustment, GEN-TACH™ breaker quik-release. Accepts wide range of 35 lb class jackhammers. Includes jackhammer mounting kit, less jackhammer/jackhammer tools, manually propelled. Specify mounting kit from page 25.	70.0	1,390.00
CTS12GEN2	Floor Covering Stripper, 9-position breaker/tool angle adjustment, side-to-side tool leveling. Accepts wide range of 35 lb class jackhammers. Includes jackhammer mounting kit and 37 foot extension cord w/GFI, less jackhammer/jackhammer tools, manually propelled. Specify mounting kit from page 25.	120.0	2,180.00

- ▶ All models are designed to remove ceramic tile, hardwood floors or other similar materials from concrete floors.
- ▶ Refer to pages 26 and 27 for mole points, chisels, blades, extension cord and jackhammer mounting kits. Jackhammer tools ordered separately.

## CTS10/CTS12GEN2 - MOIL POINTS, CHISELS & BLADES

PART NUMBER	DESCRIPTION	WEIGHT (LBS)	COMPATIBLE PRODUCT	MSRP \$
102-1000	Standardmoil point, 1.125 inch hexagon x 6 inch shank. Pack of 1.	5.8	CTS10, CTS12GEN2	48.50
102-1100	Standard narrow chisel, 1 inch wide, 1.125 inch hexagon x 6 inch shank. Pack of 1.	5.9		48.50
102-1200	Standard 3 inch wide chisel, 1.125 inch hexagon x 6 inch shank. Pack of 1.	6.0		69.75
102-1400	Standard 5 inch wide asphalt spade, 1.125 inch hexagon x 6 inch shank. Pack of 1.	8.5		195.25
102-1500A	Scraper blade holder, 1.125 inch hexagon shank.	9.0		193.95
CTS12-1801	Scraper blade, 6 inch wide, high carbon steel alloy. For use with 102-1500A. Pack of 1.	1.0		24.16
CTS12-1901	Scraper blade, 8 inch wide, high carbon steel alloy. For use with 102-1500A. Pack of 1.	1.2		30.90
CTS12-2001	Scraper blade, 12 inch wide, high carbon steel alloy. For use with 102-1500A. Pack of 1.	1.8		38.11



**CTS10/CTS12GEN2  
TOOL FAMILY**



**102-1000**



**102-1100**



**102-1200**



**102-1400**



**102-1500A**



**CTS12-1801**



**CTS12-1901**



**CTS12-2001**



**FCS16-1000A**

## CTS12GEN2 - EXTENSION CORD

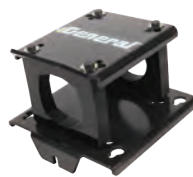
PART NUMBER	DESCRIPTION	WEIGHT (LBS)	COMPATIBLE PRODUCT	MSRP \$
FCS16-1000A	Extension cord, 12-3 AWG, 37 foot length with integral GFI. Pack of 1.	5.6	CTS12GEN2	248.00



**CTS10-1000A**



**CTS10-1100A**



**CTS10-1200A**



**CTS10-1300A**



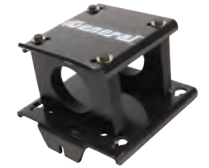
**CTS10-1410A**

## CTS10 - MOUNTING KITS ▶

PART NUMBER	DESCRIPTION	WEIGHT (LBS)	COMPATIBLE PRODUCT	MSRP \$
CTS10-1000A	Mounting kit for Makita® HM1500B electric powered jackhammer.	14.3	CTS10	237.00
CTS10-1100A	Mounting kit for Makita® HM1317CB electric powered jackhammer.	14.5		237.00
CTS10-1200A	Mounting kit for Bosch® 11335K electric powered jackhammer.	14.5		237.00
CTS10-1300A	Mounting kit for Hilti® TE095-AVR electric powered jackhammer.	14.4		237.00
CTS10-1410A	Mounting kit for Hilti® TE1000-AVR electric powered jackhammer.	15.3		237.00
CTS10-1600A	Mounting kit for Hitachi® H65SD2 electric powered jackhammer.	14.5		237.00
CTS10-2100A	Mounting kit for DeWalt® D24941K and D25951K electric powered jackhammer.	15.0		237.00



**CTS10-1600A**



**CTS10-2100A**

▶ Kits come complete with all mounting hardware.

## CTS12GEN2 - MOUNTING KITS ▶

PART NUMBER	DESCRIPTION	WEIGHT (LBS)	COMPATIBLE PRODUCT	MSRP \$
CTS12-1000A	Mounting kit for Makita® HM1500B electric powered jackhammer.	12.8	CTS12GEN2	509.00
CTS12-1100A	Mounting kit for Makita® HM1317CB electric powered jackhammer.	17.0		509.00
CTS12-1200A	Mounting kit for Bosch® 11335K electric powered jackhammer.	13.6		509.00
CTS12-1300A	Mounting kit for Hilti® TE095-AVR electric powered jackhammer.	14.1		509.00
CTS12-1410A	Mounting kit for Hilti® TE1000-AVR electric powered jackhammer.	17.2		509.00
CTS12-1600A	Mounting kit for Hitachi® H65SD2 electric powered jackhammer.	13.6		509.00
CTS12-2100A	Mounting kit for DeWalt® D24941K and D25951K electric powered jackhammer.	13.5		509.00



**CTS12-1000A**



**CTS12-1100A**

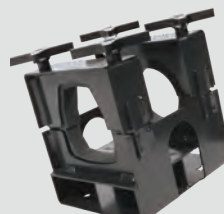
▶ Kits come complete with all mounting hardware.



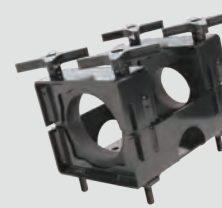
**CTS12-1200A**



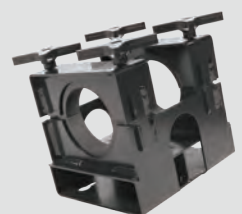
**CTS12-1300A**



**CTS12-1410A**



**CTS12-1600A**



**CTS12-2100A**





**SG12E**



**SG24E**



**SG24E3HP50**



**SG24E3HP60**



**SG24GH**

## LEGACY SERIES SINGLE HEAD SURFACE GRINDER

MODEL	DESCRIPTION	WEIGHT (LBS)	MSRP \$
SG12E	Surface Grinder, single head, 1.5 HP, 115 VAC, 60 HZ electric motor, includes 37 foot extension cord w/GFI, manually propelled.	237.0	4,725.00

- ▶ Grinder includes SG12-1000 safety/dust shield assembly kit plus accessory disc for LEGACY SERIES attachments. Grinding/coatings removal attachments ordered separately.

## LEGACY SERIES DUAL HEAD SURFACE GRINDERS

MODEL	DESCRIPTION	WEIGHT (LBS)	MSRP \$
SG24E	Surface Grinder, dual head, 2 HP, 115/230 VAC, 60 HZ electric motor, manually propelled.	290.0	6,154.00
SG24E3HP50	Surface Grinder, dual head, 3 HP, 220 VAC, 50 HZ electric motor, manually propelled.	295.0	6,226.00
SG24E3HP60	Surface Grinder, dual head, 3 HP, 230 VAC, 60 HZ electric motor, manually propelled.	295.0	6,226.00
SG24GH	Surface Grinder, dual head, 13 HP, Honda® GXV390 gasoline engine, 4-stroke, manually propelled.	307.0	7,539.00

- ▶ All grinders include SG24-1000 safety/dust shield assembly kit plus accessory discs for LEGACY SERIES attachments. Grinding/coatings removal attachments ordered separately.
- ▶ Refer to pages 28 through 31 for related grinding/coatings removal/polishing attachments, dust shields and extension cord.

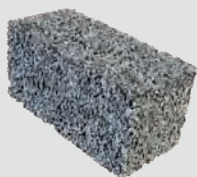
## LEGACY SERIES - GRINDING STONE ATTACHMENTS

PART NUMBER	DESCRIPTION	WEIGHT (LBS)	COMPATIBLE PRODUCT	MSRP \$
SG24-1050	Grinding stone, extra coarse 06 grit. For removal of trowel marks, high spots, rough sections on concrete floors & asphalt. Pack of 1.	1.2	All Legacy Series Single & Dual Head Grinder Models	9.95
SG24-1100	Grinding stone, coarse 10 grit. For removal of trowel marks, high spots, rough sections on concrete floors & asphalt. Pack of 1.	1.2		9.95
SG24-1200	Grinding stone, medium 24 grit. For finer concrete grinding & rough grinding of terrazzo/other stone floors. Pack of 1.	1.2		9.95
SG24-1300	Grinding stone, fine 80 grit. For pre-polishing concrete & general grinding of terrazzo/other stone floors with a water/slurry mixture only. Pack of 1.	1.2		9.95
SG24-1400	Grinding stone, super fine 120 grit. For pre-polishing concrete & general grinding of terrazzo/other stone floors with a water/slurry mixture only. Pack of 1.	1.2		9.95

- ▶ Single head grinder requires 3 stones, dual head grinder 6 stones. All grinding stones include SG24-1800 PLAS-T-LOK™ mounting wedge.
- ▶ Attachments also compatible with popular surface grinder brands.
- ▶ Refer to pages 28 through 31 for related grinding/coatings removal/polishing attachments, dust shields and extension cord.



**GRINDER STONE FAMILY**



**SG24-1050**



**SG24-1100**



**SG24-1200**



**SG24-1300**



**SG24-1400**



LEGACY SERIES - DIAM-A-TACH™ DIAMOND SEGMENT GRINDING ATTACHMENTS				
PART NUMBER	DESCRIPTION	WEIGHT (LBS)	COMPATIBLE PRODUCT	MSRP \$
SG24-2105	Grinding attachment, 30 to 40 grit, color: white. For grinding cured & green concrete plus removing, epoxies, urethanes and other high-abrasive type materials. Pack of 1.	3.7	All Legacy Series Single & Dual Head Grinder Models	273.00
SG24-2300	Grinding attachment, 30 to 40 grit. For general purpose grinding of cured & green concrete plus removing, epoxies, urethanes and other high-abrasive type materials. Pack of 1.	2.3		163.00

- ▶ Single head grinder requires 3 attachments, dual head grinder 6 attachments.
- ▶ SG24-2105 includes SG24-1800 PLAS-T-LOK™ mounting wedge. SG24-2300 includes SG24-2310 PLAS-T-LOK™ mounting wedge.
- ▶ Attachments also compatible with popular surface grinder brands.



**GRINDER DIAMOND FAMILY**



**SG24-2105**



**SG24-2300**



**SG24-2105-010**

LEGACY SERIES - DIAM-A-TACH™ SEGMENT PINS				
PART NUMBER	DESCRIPTION	WEIGHT (LBS)	COMPATIBLE PRODUCT	MSRP \$
SG24-2105-010	Diamond segment pin, 30 to 40 grit, color: white. Includes roll pin and o-ring. Pack of 1.	0.4	SG24-2105	81.95



**SG24-1600**



**SG24-1610**

LEGACY SERIES - SCARIFIER ATTACHMENTS				
PART NUMBER	DESCRIPTION	WEIGHT (LBS)	COMPATIBLE PRODUCT	MSRP \$
SG24-1600	Scarifier attachment with 1.750 inch diameter, 12-tooth, star flails. For roughing surfaces prior to topcoating plus removing varnish, paint epoxy & thin sets. Pack of 1.	2.4	All Legacy Series Single & Dual Head Grinder Models	78.69
SG24-1610	Scarifier attachment with 1.750 inch diameter, 12-tooth, beam flails. For roughing surfaces prior to topcoating plus removing varnish, paint epoxy & thin sets. Pack of 1.	2.4		78.69

- ▶ Single head grinder requires 3 attachments, dual head grinder 6 attachments. Scarifier attachments include SG24-1800 PLAS-T-LOK™ mounting wedge.
- ▶ Attachments also compatible with popular surface grinder brands.



**SG24-1900**



**SG241900-030  
PAK6 & PAK12**

## LEGACY SERIES - SCRAPE-R-TACH™ COATINGS REMOVAL SYSTEM

PART NUMBER	DESCRIPTION	WEIGHT (LBS)	COMPATIBLE PRODUCT	MSRP \$
SG24-1900	Coatings removal attachment. For removing urethanes, rubber membranes, material buildups, paints and mastics. Pack of 1.	2.6	All Legacy Series Single & Dual Head Grinder Models	204.00
SG241900-030 PAK6	Tungsten carbide insert for use with SCRAPE-R-TACH™ coatings removal attachment, 8 wear edges per insert. Single pack of 6 inserts.	0.6	SG24-1900	208.00
SG241900-030 PAK12	Tungsten carbide insert for use with SCRAPE-R-TACH™ coatings removal attachment, 8 wear edges per insert. Single pack of 12 inserts.	1.1		415.00

- ▶ Single head grinder requires 3 attachments, dual head grinder 6 attachments. SG24-1900 attachment includes SG24-1800 PLAS-T-LOK™ mounting wedge.
- ▶ For inserts, 2 are required per attachment assembly, 6 per single head grinder, 12 per dual head grinder.
- ▶ Attachment also compatible with popular surface grinder brands.



**SG24-1800**



**SG24-2310**

## LEGACY SERIES - WEDGES

PART NUMBER	DESCRIPTION	WEIGHT (LBS)	COMPATIBLE PRODUCT	MSRP \$
SG24-1800	PLAS-T-LOK™ plastic mounting wedge. Pack of 1.	0.1	All Legacy Grinding Attachments Except SG24-2300	3.41
SG24-2310	PLAS-T-LOK™ plastic mounting wedge. Pack of 1.	0.1	SG24-2300 ONLY	2.62



**SG12-1000**



**SG24-1000**



**FCS16-1000A**

## LEGACY SERIES - SAFETY/DUST SHIELD KITS & EXTENSION CORD

PART NUMBER	DESCRIPTION	WEIGHT (LBS)	COMPATIBLE PRODUCT	MSRP \$
SG12-1000	Safety/dust shield kit for enclosing grinding head and enhancing dust collection operations.	6.0	SG12E	288.92
SG24-1000	Safety/dust shield kit for enclosing grinding heads and enhancing dust collection operations.	7.2	All Legacy Series Dual Head Grinder Models	408.68
FCS16-1000A	Extension cord, 12-3 AWG, 37 foot length with integral GFI. Pack of 1.	5.6	SG12E	248.00

- ▶ Safety/dust shield kits include shield, bumper, hose, hose clamps and mounting hardware.

LEGACY SERIES - PRO POLISH SYSTEM™				
PART NUMBER	DESCRIPTION	WEIGHT (LBS)	COMPATIBLE MACHINES	MSRP \$
SG12-2200KIT	Diamond polishing kit for use on concrete surfaces with single head grinder. Includes storage box, mounting bolts, wrench and 1 each of driver, 50, 100, 200, 400, 800, 1500 and 3000 grit discs.	51.8	SG12E	2,239.00
SG24-2200KIT	Diamond polishing kit for use on concrete surfaces with dual head grinder. Includes 2 storage boxes, mounting bolts, 2 wrenches and 2 each of driver, 50, 100, 200, 400, 800, 1500 and 3000 grit discs.	103.6	All Legacy Series Dual Head Grinder Models	4,478.00
SG12-2200-010	Driver disc, 12 inch diameter. Pack of 1.	3.0	All Legacy Series Single & Dual Head Grinder Models	142.80
SG12-2200-020	Diamond disc, 12 inch diameter, 50 grit. Pack of 1.	4.0		229.50
SG12-2200-030	Diamond disc, 12 inch diameter, 100 grit. Pack of 1.	4.0		229.50
SG12-2200-040	Diamond disc, 12 inch diameter, 200 grit. Pack of 1.	4.0		229.50
SG12-2200-050	Diamond disc, 12 inch diameter, 400 grit. Pack of 1.	4.0		229.50
SG12-2200-060	Diamond disc, 12 inch diameter, 800 grit. Pack of 1.	4.0		229.50
SG12-2200-070	Diamond disc, 12 inch diameter, 1500 grit. Pack of 1.	4.0		229.50
SG12-2200-080	Diamond disc, 12 inch diameter, 3000 grit. Pack of 1.	4.0		229.50

► Polishing kits can be used with popular low-speed surface grinders.



**SG12-2200KIT**



**SG24-2200KIT**



**SG12-2200-010**



**SG12-2200-020**



**SG12-2200-030**



**SG12-2200-040**



**SG12-2200-050**



**SG12-2200-060**



**SG12-2200-070**



**SG12-2200-080**



**SG12EM**



**SG24EM**



**SG24E3HP50M**



**SG24E3HP60M**



**SG24GHM**

## M-SERIES SINGLE HEAD SURFACE GRINDER

MODEL	DESCRIPTION	WEIGHT (LBS)	MSRP \$
SG12EM	Surface Grinder, single head, 1.5 HP, 115 VAC, 60 HZ electric motor, includes 37 foot extension cord w/GFI, manually propelled.	237.0	4,725.00

- ▶ Grinder includes SG12-1000 safety/dust shield assembly kit plus accessory disc for mounting MAGNETACH® Tooling System attachments. Grinding/coatings removal attachments ordered separately.

## M-SERIES DUAL HEAD SURFACE GRINDERS

MODEL	DESCRIPTION	WEIGHT (LBS)	MSRP \$
SG24EM	Surface Grinder, dual head, 2 HP, 115/230 VAC, 60 HZ electric motor, manually propelled.	290.0	6,154.00
SG24E3HP50M	Surface Grinder, dual head, 3 HP, 220 VAC, 50 HZ electric motor, manually propelled.	295.0	6,226.00
SG24E3HP60M	Surface Grinder, dual head, 3 HP, 230 VAC, 60 HZ electric motor, manually propelled.	295.0	6,226.00
SG24GHM	Surface Grinder, dual head, 13 HP, Honda® GXV390 gasoline engine, 4-stroke, manually propelled.	307.0	7,539.00

- ▶ All grinders include SG24-1000 safety/dust shield assembly kit plus accessory discs for mounting MAGNETACH® Tooling System attachments. Grinding/coatings removal attachments ordered separately.



Accessory Disc  
**SG12-0430A**



**SG24-2500H SERIES**



**SG24-2500M SERIES**

## M-SERIES - MAGNETACH® DIAMOND GRINDING ATTACHMENTS

PART NUMBER	DESCRIPTION	WEIGHT (LBS)	COMPATIBLE PRODUCT	MSRP \$
SG12-0430A	Accessory disc for mounting MAGNETACH® Tooling System diamond segment and coatings removal attachments. Pack of 1.	10.5	All M-Series Single & Dual Head Grinder Models	388.82
SG24-2500H-18PAK3	Diamond segment, 18 grit, color: tan, for hard concrete. Single pack of 3.	1.8		139.00
SG24-2500H-30PAK3	Diamond segment, 30 grit, color: tan, for hard concrete. Single pack of 3.			139.00
SG24-2500H-50PAK3	Diamond segment, 50 grit, color: tan, for hard concrete. Single pack of 3.			139.00
SG24-2500H-100PAK3	Diamond segment, 100 grit, color: tan, for hard concrete. Single pack of 3.			139.00
SG24-2500M-18PAK3	Diamond segment, 18 grit, color: gray, for soft/medium concrete. Single pack of 3.			139.00
SG24-2500M-30PAK3	Diamond segment, 30 grit, color: gray, for soft/medium concrete. Single pack of 3.			139.00
SG24-2500M-50PAK3	Diamond segment, 50 grit, color: gray, for soft/medium concrete. Single pack of 3.			139.00
SG24-2500M-100PAK3	Diamond segment, 100 grit, color: gray, for soft/medium concrete. Single pack of 3.			139.00

- ▶ For grinding green & fully cured concrete plus removing high tensile epoxies and many thin-film coatings.
- ▶ Attachments also compatible with Lavina®/EDCO® magnetic mount tooling.





**SG24-2600RHPAK3**



**SG24-2600RH**



**SG24-2610LHPAK3**



**SG24-2610LH**

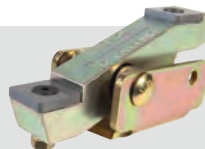
## M-SERIES - MAGNETACH® PCD GRINDING ATTACHMENTS

PART NUMBER	DESCRIPTION	WEIGHT (LBS)	COMPATIBLE PRODUCT	MSRP \$
SG24-2600RHPAK3	Coatings removal attachment, PCD, right-hand rotation, color: blue. Single pack of 3.	1.3	All M-Series Single & Dual Head Grinder Models	247.00
SG24-2610LHPAK3	Coatings removal attachment, PCD, left-hand rotation, color: black. Single pack of 3.	1.3		247.00

- ▶ Attachment rotation determined from machine operator position. Right-hand is clockwise tooling rotation, left-hand is counterclockwise tooling rotation.
- ▶ 1 right-hand, single pack of 3 required for single head grinder, 1 right-hand & 1 left hand single pack of 3 required for dual head grinders.
- ▶ For roughing/aggressive material removal and removing thin-to-medium glues, mastics, covering materials and cement levelers from concrete surfaces.
- ▶ Attachments also compatible with Lavina®/EDCO® magnetic mount tooling.



**SG24-1901RH**



**SG24-1902LH**



**SG241900-030  
PAK6 & PAK12**

## M-SERIES - MAGNETACH® TUNGSTEN CARBIDE COATINGS REMOVAL ATTACHMENTS

PART NUMBER	DESCRIPTION	WEIGHT (LBS)	COMPATIBLE PRODUCT	MSRP \$
SG24-1901RHPAK3	Coatings removal attachment, Tungsten Carbide, right-hand rotation. For removing urethanes, rubber membranes, material buildups, paints and mastics. Pack of 3.	6.3	All M-Series Single & Dual Head Grinder Models	562.00
SG24-1902LHPAK3	Coatings removal attachment, Tungsten Carbide, left-hand rotation. For removing urethanes, rubber membranes, material buildups, paints and mastics. Pack of 3.	6.3		562.00
SG241900-030PAK6	Tungsten carbide insert for use with MAGNETACH™ coatings removal attachment, 8 wear edges per insert. Single pack of 6 inserts.	0.6	SG24-1901RH & SG24-1902LH	208.00
SG241900-030PAK12	Tungsten carbide insert for use with MAGNETACH™ coatings removal attachment, 8 wear edges per insert. Single pack of 12 inserts.	1.1		415.00

- ▶ Attachment rotation determined from machine operator position. Right-hand is clockwise tooling rotation, left-hand is counterclockwise tooling rotation.
- ▶ 1 right-hand, single pack of 3 required for single head grinder, 1 right-hand & 1 left hand single pack of 3 required for dual head grinders.
- ▶ For inserts, 2 are required per attachment assembly, 6 per single head grinder, 12 per dual head grinder.
- ▶ Attachments also compatible with Lavina®/EDCO® magnetic mount tooling.



**SG12-1000**



**SG24-1000**



**FCS16-1000A**

## M-SERIES - SAFETY/DUST SHIELD KITS & EXTENSION CORD

PART NUMBER	DESCRIPTION	WEIGHT (LBS)	COMPATIBLE PRODUCT	MSRP \$
SG12-1000	Safety/dust shield kit for enclosing grinding head and enhancing dust collection operations.	6.0	SG12EM	288.92
SG24-1000	Safety/dust shield kit for enclosing grinding heads and enhancing dust collection operations.	7.2	All M-Series Dual Head Grinder Models	408.68
FCS16-1000A	Extension cord, 12-3 AWG, 37 foot length with integral GFI. Pack of 1.	5.6	SG12EM	248.00

- ▶ Safety/dust shield kits include shield, bumper, hose, hose clamps and mounting hardware.



**SG7 SURFACEPRO™  
EDGE GRINDER**

SG7 SurfacePro™ EDGE GRINDER			
MODEL	DESCRIPTION	WEIGHT (LBS)	MSRP \$
SG7	Edge Grinder, 2300W, 115 VAC, 60 HZ electric motor, universal .625-11 UNC arbor. Includes 7 inch diameter diamond grinding cup wheel, manually propelled.	39.0	1,450.00



**SG7-2000-30**

SG7 - GRINDING CUP WHEEL				
PART NUMBER	DESCRIPTION	WEIGHT (LBS)	COMPATIBLE PRODUCT	MSRP \$
SG7-2000-30	Grinding cup wheel, 7 inch diameter, 12 segments, universal .625-11UNC arbor connection. Pack of 1.	1.5	SG7	79.00

HELLCAT™ SERIES - SURFACE PLANERS			
MODEL	DESCRIPTION	WEIGHT (LBS)	MSRP \$
SP8GH9HP	Surface Planer, 9 HP, Honda® GX270 gasoline engine, 4-stroke, 8 inch cutting width, manually propelled, less drum and flail kit.	227.0	6,360.00
SP8E5HP50	Surface Planer, 5 HP, 220 VAC, 50 HZ electric motor, 8 inch cutting width, manually propelled, less drum and flail kit.	237.0	6,483.00
SP8E5HP60	Surface Planer, 5 HP, 230 VAC, 60 HZ electric motor, 8 inch cutting width, manually propelled, less drum and flail kit.	237.0	6,483.00

- ▶ Specify/order flail kit & drum separately. Order options: Flail kit fully assembled/installed on drum or flail kit **not** assembled/installed on drum.
- ▶ Refer to pages 35 & 36 for related flail kits, drums & drum parts.



**SP8GH9HP**



**SP8E5HP50  
&  
SP8E5HP60**

HELLCAT™ SERIES - FLAIL KIT & DRUM (FULLY ASSEMBLED) ▶				
PART NUMBER	DESCRIPTION	WEIGHT (LBS)	COMPATIBLE PRODUCT	MSRP \$
SP8-6000A	Flail kit/drum assembly. Includes 124 star flails, 120 washers & drum. Pack of 1.	21.4	All HELLCAT™ Series Surface Planer Models	1,004.00
SP8-6100A	Flail kit/drum assembly. Includes 124 beam flails, 120 washers & drum. Pack of 1.	21.6		1,004.00
SP8-6105A	Flail kit/drum assembly. Includes 184 beam flails, 56 washers & drum. Pack of 1.	23.4		1,145.00
SP8-6200A	Flail kit/drum assembly. Includes 84 pentagonal tungsten carbide flails, 84 washers & drum. Pack of 1.	21.1		1,220.00
SP8-6202A	Flail kit/drum assembly. Includes 48 pentagonal tungsten carbide flails, 160 washers & drum. Pack of 1.	19.8		1,030.00
SP8-6300A	Flail kit/drum assembly. Includes 28 tungsten carbide milling flails, 48 washers & drum. Pack of 1.	24.2		1,286.00

- ▶ Drum included on all fully assembled flail/drum kits is a 1.125 inch hexagon drive, two-section drum.



**SP8 FLAIL KIT FAMILY**

Kits displayed on this page **"Include the 2 section drum as part of the package"**



**SP8-6000A**



*Star Flail*



**SP8-6100A**



*Beam Flail*



**SP8-6105A**



*Beam Flail*



**SP8-2200A**

*2 Section Flail Drum*



**SP8-6200A**



*Pentagonal Tungsten Carbide Flail*



**SP8-6202A**



*Pentagonal Tungsten Carbide Flail*



**SP8-6300A**



*Tungsten Carbide Milling Flail*



Star Flail



SP8-6000



Beam Flail



SP8-6100



Beam Flail



SP8-6105



Pentagonal  
Tungsten  
Carbide Flail



SP8-6200



Pentagonal  
Tungsten  
Carbide Flail



SP8-6202



Tungsten  
Carbide  
Milling Flail



SP8-6300

Kits displayed on this page **"Do NOT include 2 section drum as part of the package"**

## HELLCAT™ SERIES - FLAIL KITS (NO DRUM)

PART NUMBER	DESCRIPTION	WEIGHT (LBS)	COMPATIBLE PRODUCT	MSRP \$
SP8-6000	Flail kit. Includes 124 star flails, 120 washers, less drum. Pack of 1.	8.4	All HELLCAT™ Series Surface Planer Models	\$415.00
SP8-6100	Flail kit. Includes 124 beam flails, 120 washers, less drum. Pack of 1.	8.6		\$415.00
SP8-6105	Flail kit. Includes 184 beam flails, 56 washers, less drum. Pack of 1.	10.4		\$562.00
SP8-6200	Flail kit. Includes 84 pentagonal tungsten carbide flails, 84 washers, less drum. Pack of 1.	8.1		\$625.00
SP8-6202	Flail kit. Includes 48 pentagonal tungsten carbide flails, 160 washers, less drum. Pack of 1.	6.8		\$447.00
SP8-6300	Flail kit. Includes 28 tungsten carbide milling flails, 48 washers, less drum. Pack of 1.	11.2		\$683.00

► Flail kits **do not** include 2 section drum as part of package. Order drum separately.



SP8-2100-A

2 Section Flail Drum



SP8-2200A

2 Section Flail Drum



SP8-2000-040  
PAK4



SP8-2000-050  
PAK2



SP8-2200-050  
PAK2

## FLAIL DRUM PARTS

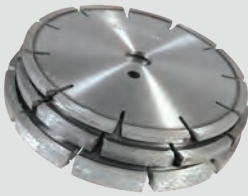
PART NUMBER	DESCRIPTION	WEIGHT (LBS)	COMPATIBLE PRODUCT	MSRP \$
SP8-2100-A	Flail drum assembly, .812 inch hexagon drive, heat-treated steel, two-section, less flail kit. Pack of 1.	10.0	SP8GH	562.07
SP8-2200A	Flail drum assembly, 1.125 inch hexagon drive, heat-treated steel, two-section, less flail kit. Pack of 1.	13.0	All HELLCAT™ Series Surface Planer Models	583.00
SP8-2000-040 PAK4	Flail drum rod, heat-treated steel. Single pack of 4.	2.0	SP8-2100A, SP8-2200A	94.13
SP8-2000-050 PAK2	Flail drum end cap, .812 inch hexagon drive drum, steel. Single pack of 2.	1.1	SP8-2100A	47.28
SP8-2200-050 PAK2	Flail drum end cap, 1.125 inch hexagon drive drum, steel. Single pack of 2.	1.5	SP8-2200A	48.22



CS8GH CrakChaser™ RANDOM CRACK SAW			
MODEL	DESCRIPTION	WEIGHT (LBS)	MSRP \$
CS8GH	Random Crack Saw, 13 HP, Honda® GXV390 gasoline engine, 4-stroke, 8 inch diameter blade capacity, 1.5 inch maximum straight line cutting depth, manually propelled, less blade and water feed kit.	285.0	6,175.00



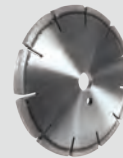
**CS8GH  
CRACK SAW**



**CS8 BLADE FAMILY**



**CS8-1101**



**CS8-1201**



**CS8-1301**

CS8GH CrakChaser™ – CRACK SAW BLADES				
PART NUMBER	DESCRIPTION	WEIGHT (LBS)	COMPATIBLE PRODUCT	MSRP \$
CS8-1101	Crack saw blade, combination matrix, 8 inch diameter, .250 inch cutting width. Pack of 1.	3.0	CS8GH	236.00
CS8-1201	Crack saw blade, combination matrix, 8 inch diameter, .375 inch cutting width. Pack of 1.	3.3		302.00
CS8-1301	Crack saw blade, combination matrix, 8 inch diameter, .500 inch cutting width. Pack of 1.	3.6		395.00

► All blades are for normal use in asphalt, green & fully cured concrete.



**CS8-1000**

CS8GH CrakChaser™ - WATER FEED KIT				
PART NUMBER	DESCRIPTION	WEIGHT (LBS)	COMPATIBLE PRODUCT	MSRP \$
CS8-1000	Water feed system kit, valve controlled. For use in wet cut applications. Includes ON/OFF valve, water connection hoses, mounting hardware, dual blade guard connection fittings. Pack of 1.	2.6	CS8GH	199.00



**130C**



**190C**



**190M**

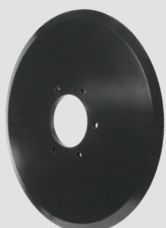
## CUT-R-TACH® SERIES ROTARY ASPHALT CUTTING ATTACHMENTS

MODEL	DESCRIPTION	WEIGHT (LBS)	MSRP \$
130C	Asphalt Cutting Attachment, bucket mount, 13.5 inch diameter blade, 5 inch maximum cutting depth, 25,000 lbs. maximum downforce capacity. <b>Not for use with skid loaders.</b>	152.0	1,865.00
190C	Asphalt Cutting Attachment, bucket mount, 19 inch diameter blade, 5-1/2 inch maximum cutting depth, 50,000 lbs. maximum downforce capacity. <b>Not for use with skid loaders.</b>	241.0	2,655.00
190M	Asphalt Cutting Attachment, moldboard mount, 19 inch diameter blade, 5-1/2 inch maximum cutting depth, 50,000 lbs. maximum downforce capacity.	323.0	3,108.00

► 190M fits moldboard heights of 13 to 28 inches with 13 inch minimum mold lift.



**130C-0020A**



**190C-0010**

## CUT-R-TACH® SERIES - BLADES

PART NUMBER	DESCRIPTION	WEIGHT (LBS)	COMPATIBLE PRODUCT	MSRP \$
130C-0020A	Cutting blade, 13.5 inch diameter, heat-treated, alloy-steel w/welded hub & sleeve-type bearings. Pack of 1.	26.2	130C	866.00
190C-0010	Cutting blade, 19 inch diameter, heat-treated, alloy-steel. Pack of 1.	34.7	190C, 190M	933.00

BITTYBREAKER™ MANUAL IMPACT BREAKER			
MODEL	DESCRIPTION	WEIGHT (LBS)	MSRP \$
102	Impact Breaker, blow force energy 1,450 ft. lbs., accepts 1.125 inch hexagon x 6 inch shank jackhammer tools, manually operated, less jackhammer tool.	21.0	236.00



**102 BITTYBREAKER™**



**102-1000**



**102-1100**



**102-1200**



**102-1400**



**BITTYBREAKER™  
TOOL FAMILY**

BITTYBREAKER™ - MOIL POINTS & CHISELS				
PART NUMBER	DESCRIPTION	WEIGHT (LBS)	COMPATIBLE PRODUCT	MSRP \$
102-1000	Standardmoil point, 1.125 inch hexagon x 6 inch shank. Pack of 1.	5.8	102 BITTYBREAKER™	48.50
102-1100	Standard narrow chisel, 1 inch wide, 1.125 inch hexagon x 6 inch shank. Pack of 1.	5.9		48.50
102-1200	Standard 3 inch wide chisel, 1.125 inch hexagon x 6 inch shank. Pack of 1.	6.0		69.75
102-1400	Standard 5 inch wide asphalt spade, 1.125 inch hexagon x 6 inch shank. Pack of 1.	8.5		195.25



**VS220**

DUST-COLLECT-R™ DUST COLLECTION SYSTEM			
MODEL	DESCRIPTION	WEIGHT (LBS)	MSRP \$
VS220	Dust Collection System. Two, 115 VAC, 60 HZ, single speed motors. Peak 2.6 HP (two motors). Replaceable HEPA filters, primary filter status monitoring gauge plus manual cleaning system. Includes 3 inch diameter, 25 foot length hose and connectors.	121.0	4,279.00



**VS220-0250A**



**VS220-1000A**  
3-inch diameter



**VS220-1100A**  
2-inch diameter

VS220 DUST-COLLECT-R™ - HOSE & WAND				
PART NUMBER	DESCRIPTION	WEIGHT (LBS)	COMPATIBLE PRODUCT	MSRP \$
VS220-0250A	Dust collection wand & head. 2 inch diameter steel wand, 20 inch wide diecast head, adjustable height rollers, plated. Pack of 1.	6.1	VS220	363.58
VS220-1000A	Dust collection hose, 3 inch diameter, 25 foot length, helix reinforced, polyethylene, includes connectors. Pack of 1.	19.9		576.00
VS220-1100A	Dust collection hose, 2 inch diameter, 25 foot length, helix reinforced, polyethylene, includes connectors. Pack of 1.	10.9		295.00

## EP8HL VelociMax™ SERIES HAZARDOUS VENTILATION BLOWER

MODEL	DESCRIPTION	WEIGHT (LBS)	MSRP \$
EP8HL	Blower, radial, .33 HP, 115 VAC, 60 HZ, single phase, explosion-proof, fully enclosed, non-vented (TENV) electric motor, lever activated internal ON/OFF motor switch, 1725 RPM, 8 inch diameter inlet & outlet.	73.0	2,795.00



EP8HL

- Blower is certified by Canadian Standards Association (CSA) for use in National Electric Code Class I Group D, Class II Group G & Class III hazardous location atmospheres & non-hazardous atmospheres.



SCFD825



SCHL8

## EP8HL VelociMax™ SERIES – DUCTING &amp; STORAGE

PART NUMBER	DESCRIPTION	WEIGHT (LBS)	COMPATIBLE PRODUCT	MSRP \$
SCFD825	Ducting, anti-static, 8 inch diameter, 25 foot length, wire helix reinforcement w/anti-scuff strip. Includes aluminum attachment cuff, static ground leads, opposite end nylon ring.	15.0	EP8HL	632.75
SCHL8	Storage canister, aluminum, welded, heavy-duty w/cover. Includes carry handle & cover latch. For use with SCFD825 ducting.	7.5		379.75





**GP8**



**GP8H**



**EP8**



**EP8ACP**



**EP8AC25P**



**EP12ACP**



**EP16ACP**

## VelociMax™ SERIES NON-HAZARDOUS VENTILATION BLOWERS

MODEL	DESCRIPTION	WEIGHT (LBS)	MSRP \$
GP8	Blower, radial, 3.5 HP, Briggs & Stratton® gasoline engine, 4-stroke, 8 inch diameter inlet/outlet, free air flow: 1561.6 CFM, less duct.	64.0	1,115.00
GP8H	Blower, radial, 3.5 HP, Honda® gasoline engine, 4-stroke, 8 inch diameter inlet/outlet, free air flow: 1561.6 CFM, less duct.	66.0	1,365.00
EP8	Blower, radial, .33 HP, 115 VAC. 60 HZ, single speed, electric motor, 8 inch diameter inlet/outlet, free air flow: 1277.4 CFM, less duct.	57.6	1,045.00
EP8ACP	Blower, axial, .33 HP, 115 VAC. 60 HZ single speed, electric motor, 8 inch diameter inlet/outlet, 25 foot length power cord, free air flow: 501.0 CFM, less duct.	15.0	355.00
EP8AC25P	Blower, axial, .33 HP, 115 VAC. 60 HZ single speed, electric motor, 8 inch diameter inlet/outlet, integral 25 foot duct, 25 foot length power cord, free air flow: 902.4 CFM.	28.0	506.00
EP12ACP	Blower, axial, 1 HP, 115 VAC. 60 HZ single speed, electric motor, 12 inch diameter inlet/outlet, 25 foot length power cord, free air flow: 1825.0 CFM, less duct.	26.0	439.00
EP16ACP	Blower, axial, 1 HP, 115 VAC. 60 HZ single speed, electric motor, 16 inch diameter inlet/outlet, 25 foot length power cord, free air flow: 4450.0 CFM, less duct.	33.6	499.00

► Refer to page 42 & 43 for related duct couplers, ducting & dust collection bags.



**FD COUPLER FAMILY**



**FD8C**



**FD12C**



**FD16C**

## FD SERIES - DUCT COUPLERS

PART NUMBER	DESCRIPTION	WEIGHT (LBS)	COMPATIBLE PRODUCT	MSRP \$
FD8C	Duct coupler, 8 inch diameter, stainless steel, heavy-duty, includes clamps.	1.3	FD825	55.25
FD12C	Duct coupler, 12 inch diameter, stainless steel, heavy-duty, includes clamps.	1.7	FD1225, FD1250	102.00
FD16C	Duct coupler, 16 inch diameter, stainless steel, heavy-duty, includes clamps.	2.5	FD1625	102.00



**FD825**



**FD1225**



**FD1250**



**FD1625**



**FD SERIES DUCT FAMILY**

## FD SERIES - DUC-PAC™ DUCTING

MODEL	DESCRIPTION	WEIGHT (LBS)	COMPATIBLE PRODUCT	MSRP \$
FD825	Duct, 8 inch diameter, 25 foot length, integral storage bag.	7.5	GP8, GP8H, EP8, EP8ACP	196.00
FD1225	Duct, 12 inch diameter, 25 foot length, integral storage bag.	9.8	EP12ACP, AF501	289.00
FD1250	Duct, 12 inch diameter, 50 foot length, integral storage bag.	22.8	EP12ACP	489.00
FD1625	Duct, 16 inch diameter, 25 foot length, integral storage bag.	13.4	EP16ACP	380.00

► All ducting constructed of vinyl coated, synthetic fabric & includes wire helix reinforcement w/anti-scuff strip, integral attachment strap, opposite end nylon ring.



**DB810**



**DB1210**



**DB1610**

## DB SERIES - DUST COLLECTION BAGS

PART NUMBER	DESCRIPTION	WEIGHT (LBS)	COMPATIBLE PRODUCT	MSRP \$
DB810	Dust collection bag, 8 inch diameter, 9.8 foot length.	3.3	GP8, GP8H, EP8, EP8ACP	42.25
DB1210	Dust collection bag, 12 inch diameter, 9.8 foot length.	4.1	EP12ACP	69.00
DB1610	Dust collection bag, 16 inch diameter, 9.8 foot length.	5.8	EP16ACP	96.00

► All dust bags constructed of non-woven polyester & include integral attachment strap.



**EBF30  
TEMP-BUST-R®**



**EBF36  
TEMP-BUST-R®**



**EBF42  
TEMP-BUST-R®**

#### NON-HAZARDOUS DRYING/COOLING/CIRCULATION

MODEL	DESCRIPTION	WEIGHT (LBS)	MSRP \$
EBF30	Ventilation Fan, .50 HP, 115 VAC, 60 HZ, 3-speed motor, 30 inch diameter, 14 foot power cord, air flow rate: 4,200 to 6,000 CFM.	50.0	495.00
EBF36	Ventilation Fan, .75 HP, 115 VAC, 60 HZ, 3-speed motor, 36 inch diameter, 14 foot power cord, air flow rate: 9,200 to 11,200 CFM.	65.0	695.00
EBF42	Ventilation Fan, .75 HP, 115 VAC, 60 HZ, 3-speed motor, 42 inch diameter, 14 foot power cord, air flow rate: 16,500 to 18,500 CFM.	92.0	995.00



**DOWNFORCE™  
EP20ACP**



**CD10P**

#### NON-HAZARDOUS DRYING/COOLING/CIRCULATION

MODEL	DESCRIPTION	WEIGHT (LBS)	MSRP \$
EP20ACP	Blower, axial, .40 HP, 115 VAC, 60 HZ, 2-speed electric motor, 25 foot length power cord, free air flow: 3500.0, less duct.	41.0	465.00
CD10P	Carpet Dryer, radial, 1 HP, 115 VAC, 60 HZ, 3-speed electric motor, 25 foot length power cord, free air flow up to 3800.0 CFM.	35.0	386.00



**AF501  
AIR-SCRUB-R™**

## NON-HAZARDOUS AIR-SCRUB-R™ PORTABLE HEPA AIR FILTER

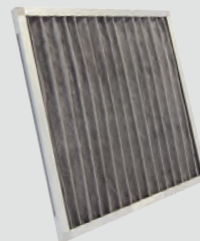
MODEL	DESCRIPTION	WEIGHT (LBS)	MSRP \$
AF501	Air Filter, portable, HEPA, .25 HP, 115 VAC, 60 HZ, 9.5 inch inlet, 5 x 13 inch outlet, variable speed, air flow rate up to 500 CFM, 15 foot length power cord, includes primary and HEPA filter.	31.4	875.00



**AF501-0010**



**AF501-0020**



**AF501-0030**



**LFD16100**

## AF501 - FILTERS & DUCTING

PART NUMBER	DESCRIPTION	WEIGHT (LBS)	COMPATIBLE PRODUCT	MSRP \$
AF501-0010PAK3	Filter, primary, 99% efficiency, 15.75 x 15.75 x 0.75 inches. Pack of 3.	2.1	AF501	89.00
AF501-0020	Filter, HEPA, 99.97% efficiency, 19 x 16 x 2 inches. Pack of 1.	3.6		129.85
AF501-0030PAK2	Filter, activated carbon, 15.75 x 15.75 x 0.75 inches. Pack of 2.	2.0		159.80
LFD16100	Ducting, lay flat, 16 inch diameter, 100 foot length, 6 mil clear polyethylene, includes pack of 17 attachment bands. <b>For outlet applications only.</b>	7.7		179.65

► Refer to page 43 for information on FD1225 DUC-PAC™ that can be used with AF501 inlet applications.



## OVERVIEW

The availability and variances in product and component costs make this Price List subject to revision. Consult the factory for the latest Price List revision number, product/component revision, availability and price. All information presented in this Price List is subject to change without notice or obligation. Contact the factory for price and availability of any product/component not listed.

## DETAILS

1. Prices are FOB Owatonna, Minnesota, in US dollars and subject to change without notice or obligation.
2. Product design, specifications, product catalogs, price lists, selling terms and conditions are subject to change without notice or obligation.
3. Discounts are not allowed on tax, freight or labor.
4. Returned merchandise must be of current design, in original and unused condition, and is subject to a restocking charge. Special order or customer modified products are not returnable. Contact our Customer Service Department for specific information.
5. Contact our Customer Service Department regarding a product return for any reason. A Return Materials Authorization (RMA) form will be issued. Complete and return the RMA form with the shipment. Shipments received without the RMA form will be refused and returned at the sender's expense.
6. Selling terms are NET 30 days to accredited accounts.
7. \$30.00 US minimum invoice NET for NON Electronic Data Interchange (EDI) related invoice transactions.  
\$40.00 US minimum invoice NET for Electronic Data Exchange (EDI) related invoice transactions.
8. Names depicted are the registered trademark of their respective owners.

**ORDER CANCELLATION CHARGES:** All applicable material and labor charges will be invoiced for merchandise designed and manufactured to special customer specification that is cancelled before shipment is made.

If you have questions, please feel free to contact us. We will be glad to help you.

**Business Hours:** 8:00am – 5:00pm CST, Monday through Friday. Closed Saturday & Sunday.

**Telephone:** 800.533.0524 or +507.451.5511

**Telefax:** 877.344.4375 or +507.451.5511

**After Hours Technical Support Telephone:**

+507.451.5510 menus option 0

*(After hour calls will be returned as soon as possible.)*

*If you do not need direct help immediately, please feel free to visit our website [www.generalequip.com](http://www.generalequip.com) for more detailed product information such as literature, manuals, tips, videos, specials or for purchasing online.*

## SCOPE

It is the intention of General Equipment Company to supply products to the marketplace that reflect the highest standards for materials, design and manufacture. Each original customer is entitled to receive coverage as described by the current limited warranty program for the product(s) purchased, regardless of where it (they) was (were) originally purchased. This program is intended to serve as a method to facilitate the proper communication procedures for the purpose of obtaining applicable coverage for a product.

## WHAT THE LIMITED WARRANTY COVERS

General Equipment Company warrants that each new and unused product and/or accessory sold by it shall be:

1. Free from defects in material and workmanship under normal use and service for a period of two (2) years from the original date of purchase.
2. To warrant the direct labor expenses associated with defects in material and workmanship for a period of one (1) year from the original date of purchase.

The warranty period for materials, workmanship and labor expenses shall run concurrent from the original date of purchase (invoice date). No exception to this policy will be made.

The obligation under this warranty program is limited to the current, flat labor rates allowed by it and the replacement and/or repair at its Owatonna, Minnesota, factory site, or at an authorized dealer designated by it, of such part or parts as shall appear upon inspection to have been defective in material and/or workmanship at the time sold. The part or parts claimed to be defective must be returned to the inspection point, with reasonable transportation charges prepaid. In the event that the part or parts are determined to be covered by the terms of the warranty program, General Equipment Company will reimburse the original purchaser for reasonable transportation charges. The amount designated, as reasonable transportation charges shall be the sole discretion of General Equipment Company. Any parts or parts replaced under the terms of the warranty program will carry the applicable new product warranty. At the time of requesting warranty service, the original purchaser must present evidence of the purchase date of the part or the parts submitted for warranty inspection.

## WHAT THE LIMITED WARRANTY DOES NOT COVER

The warranty does not cover depreciation or damage caused by: normal wear, accident, improper protection storage, improper use, alterations, tampering, the environment, improper maintenance, or incidental costs incurred by the original purchaser while the product is being examined and/or repaired under warranty. In addition to the above limitations and/or exclusions, the following basic components are not covered by the warranty:

1. Parts and/or components subject to wear with normal usage, but not specifically limited to the following:
  - High impact/wear related components including, but not limited to: V-belts, flails, flail rods, and flail drums.
  - High abrasion/wear related components including, but not limited to: augers, auger flighting, boring heads, multi-accessory attachments, tungsten carbide inserts, and flexible ducts.
  - Engine throttle control cable assemblies and related control devices.
  - Centrifugal clutch components including, but not limited to: shoes, springs, drum and rotor assembly.
2. Part and labor required for scheduled and general maintenance services as defined in applicable operator's manual.
3. Engines, motors, controls and other accessories sold with, attached to, or operated with a product sold by General Equipment Company and warranted separately by the Original Equipment Manufacturer (OEM) per its respective program.

For further details on the most current product warranty program, visit our website or if you have questions contact us directly.



# **General<sup>®</sup>**

## **EQUIPMENT COMPANY**

Issue Date October 2023 | Version 20

620 Alexander Drive S.W.  
Owatonna MN, 55060  
Ph: 800.533.0524 | Fax 877.344.4375

**WWW.GENERALEQUIP.COM**

Copyright© 2023, General Equipment Company